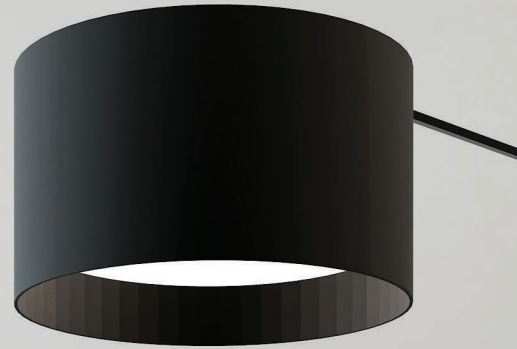




Split Systems





Our commitment to quality, service, research and development has helped us gain a leading position in today's marketplace in heating, cooling and air conditioning for the home or office.

#worksforme



Contents



Why Choose Mitsubishi Electric?	4
--	---

Product Line-up	6
------------------------	---

Wall-Mounted

MSZ-FH Series	8
---------------	---

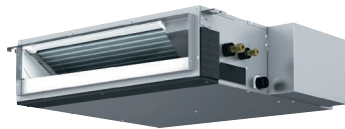
MSZ-EF Series	10
---------------	----

MSZ-GL Series	12
---------------	----



Floor Standing

MFZ-KJ Series	14
---------------	----



Ceiling-Cassette & Ceiling-Concealed

SLZ Series	16
------------	----

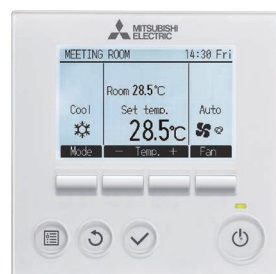
SEZ Series	17
------------	----

Controls	18
-----------------	----

Wi-Fi Control	19
----------------------	----

Functions	20
------------------	----

Specifications	22
-----------------------	----





Why Choose Mitsubishi Electric?

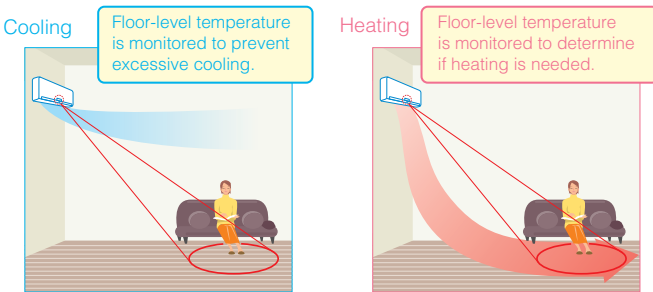
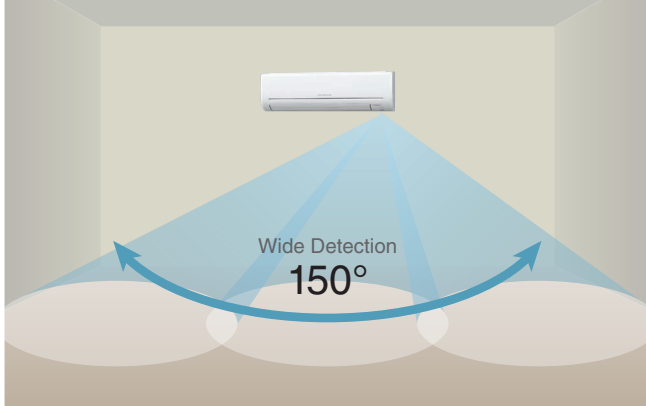
As a leading company in the industry, Mitsubishi Electric has a proud history in the manufacturing and supply of leading edge electrical and electronic equipment for both domestic and commercial use. Our efforts to make indoor life more comfortable began in 1921, with the introduction of our first electric fan which became an instant hit. Some 10 years later we began to manufacture coolers, which were just as popular.

Our commitment to quality service, research and development has helped us gain a leading position in today's marketplace in a wide variety of areas including heating, cooling and air conditioning. Mitsubishi Electric's 'today technology' provides climate controlled comfort wherever you live, work and relax.

Whether it's consistent heating and cooling for the home or office, Mitsubishi Electric offers you state-of-the-art technology that is quiet, simple to use, reliable and above all, energy efficient.

Energy Efficiency

Mitsubishi Electric strive for the perfect balance of performance, reliability, low power consumption and a long operational life span for all our products. The “3D i-See Sensor” sweeps from side-to-side automatically monitoring the floor temperature over a wide area spanning 150°. The airflow speed and temperature are adjusted to prevent over-heating/cooling, thereby eliminating the consumption of excessive electricity. (FH Model only)



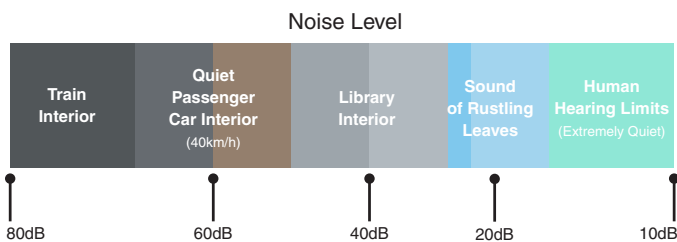
Economic Operation

Impressively low operating cost is a key advantage of inverter air cutting-edge electronics and mechanical technologies to achieve a synergistic effect that enables improvements in heating/cooling performance efficiency. Better performance and lower energy consumption are the result.



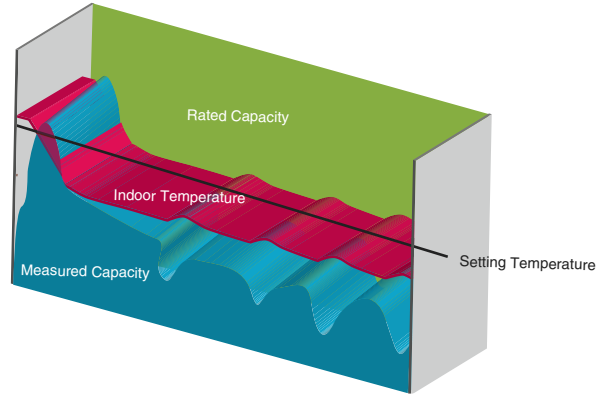
Quiet Operation

We recognise that noise affects comfort, so we constantly work to make our air conditioners as quiet as possible. With improvements to our fan blades combined with grille shape to our outdoor unit, it's even quieter when in low noise mode. We want you to feel the comfort, not hear it.



Inverter Technology

Mitsubishi Electric inverter technologies ensure superior performance including the optimum control of operation frequency. Optimum power is applied in all heating/cooling ranges and maximum comfort is achieved while consuming minimal energy.



Flexible Choice

Mitsubishi Electric air conditioners range from wall-mounted, floor-standing, ceiling-concealed, ceiling-cassette to ceiling-suspended units, which are suitable for any needs.



Ultimate Comfort and Modern Design

Mitsubishi Electric's clean and attractive air conditioners range in a variety of designs to suit diversified needs; with stylish lines for the living room and quiet operation for the bedroom, our air conditioners provide advanced air control which is smart and sophisticated.

Peace of Mind

Mitsubishi Electric's air conditioners range used in residential applications are covered by a full 5 year parts and labour warranty. Delivering optimum performance year in year out.

See website for terms and conditions.



Product Line Up

WALL-MOUNTED

MSZ-FH Series

2.2kW	2.5kW	3.5kW	5.0kW	6.0kW	7.1kW	8.0kW
-	✓	✓	✓	-	-	-

- » Heating & Cooling
- » Inverter Technology
- » Double Vane
- » 24 Hour Timer
- » Natural Flow
- » Quiet Operation
- » Plasma Duo
- » 3D i-See Sensor
- » Anti-Mould Filter
- » Quick Clean
- » Weekly Timer
- » Auto Change Over
- » Wi-Fi Connectable*1



MSZ-FH Series

MSZ-EF Series

2.5kW	3.5kW	4.2kW	5.0kW	6.0kW	7.1kW	8.0kW
✓	✓	✓	✓	-	-	-

- » Heating & Cooling
- » Inverter Technology
- » Auto Vane
- » 3 Colours available
White, Silver & Black
- » Nano Platinum Filter
- » Weekly Timer
- » Wi-Fi Connectable*1
- » Beveled Flat Panel
- » Auto Restart
- » 24 Hour Timer
- » Auto Change Over



MSZ-EF Series

MSZ-GL Series

2.2kW	2.5kW	3.5kW	4.2kW	4.8kW	6.0kW	7.1kW	7.8kW
-	✓	✓	✓	✓	✓	✓	✓

- » Heating & Cooling
- » Inverter Technology
- » R32 Refrigerant
- » Quiet Operation
- » i-Save Mode
- » Quick Clean
- » Blue Fin Condenser
- » Auto Change Over
- » Wi-Fi Connectable*1
- » Demand Response Capable
- » Wide & Long Airflow (71/80)
- » Weekly Timer
- » 24 Hour Timer
- » Anti-Allergy Enzyme Filter (Optional)



MSZ-GL Series

FLOOR-STANDING

MFZ-KJ Series

2.2kW	2.5kW	3.5kW	5.0kW	6.0kW	7.1kW	8.0kW
-	✓	✓	✓	✓	-	-

- » Heating & Cooling
- » Pure White
- » Quiet Operation
- » Wi-Fi Connectable*1
- » Anti-Allergy Enzyme Filter
- » i-Save Mode
- » 24 Hour Timer
- » Auto Change Over
- » Multi-Vane Flow
- » Auto Restart



MFZ-KJ Series

CEILING-CASSETTE / CEILING-CONCEALED

SLZ Series

2.2kW	2.3kW	3.5kW	4.2kW	6.0kW	7.1kW	8.0kW
-	✓	-	✓	-	-	-

- » Heating & Cooling
- » Quiet Operation
- » 2x2 Compact Size
- » Long-Life Filter
- » Fresh-Air Intake
- » Weekly Timer
- » Auto Change Over
- » Auto Restart
- » Wi-Fi Connectable*1
- » Auto Vane
- » Pure White

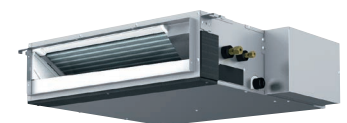


SLZ Series

SEZ Series

2.2kW	2.5kW	3.7kW	5.1kW	5.6kW	6.5kW	8.0kW
-	✓	✓	✓	✓	✓	-

- » Auto Restart
- » Heating & Cooling
- » Quiet Operation
- » 200mm Compact Size
- » Air Cleaning Filter
- » Weekly Timer
- » Auto Change Over
- » Wi-Fi Connectable*1



SEZ Series

*1 Optional upgrade adapter required per unit.



FH Series



The FH series is the culmination of our air-cleaning, 3D i-See sensor and airflow technologies, and represent our efforts to create an air conditioner that puts healthy living as number one priority.

Small Rooms

Unit Dimension: (w) 925 x (d) 234 x (h) 305 (+17) mm

MSZ-FH25VE-A1

Cooling Capacity: 2.5kW (min 1.4kW~max 3.5kW)
Cooling Efficiency-EER: 4.90/AEER:4.60
Heating Capacity: 3.2kW (min 1.8kW~max 5.5kW)
Heating Efficiency-COP: 5.52/ACOP:5.21

MSZ-FH35VE-A1

Cooling Capacity: 3.5kW (min 0.8kW~max 4.0kW)
Cooling Efficiency-EER: 4.07/AEER:3.92
Heating Capacity: 4.0kW (min 1.0kW~max 6.3kW)
Heating Efficiency-COP: 5.00/ACOP:4.80



Medium Rooms

Unit Dimension: (w) 925 x (d) 234 x (h) 305 (+17) mm

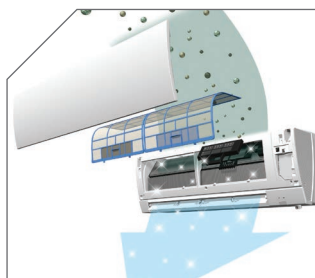
MSZ-FH50VE-A1

Cooling Capacity: 5.0kW (min 1.9kW~max 6.0kW)
Cooling Efficiency-EER: 3.62/AEER:3.54
Heating Capacity: 6.0kW (min 1.7kW~max 8.7kW)
Heating Efficiency-COP: 4.05/ACOP:3.96



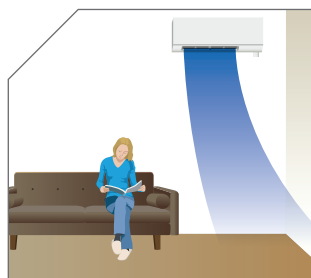
*Large windows and room volume are some of the factors that may effect the performance of the air conditioning unit.

FEATURES



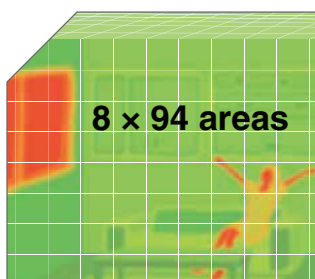
Plasma Filter

The Plasma Filter System is an advanced, multi-stage filtration system designed to effectively neutralise contaminants such as allergens, viruses and bacteria, ensuring the circulation of fresh, clean air back into the room.



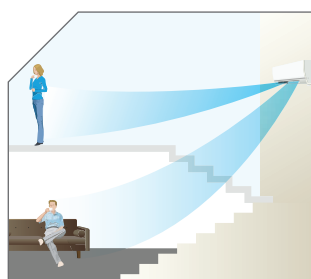
Indirect / Direct Airflow

The indirect airflow setting can be used when the flow of air feels too strong or direct. For example, it can be used during cooling to avert airflow and prevent body temperature from becoming excessively cool.



3D i-See Sensor

The FH Series is equipped with 3D i-See Sensor, an infrared-ray sensor that measures the temperature at distant positions. While moving to the left and right, eight vertically arranged sensor elements analyse the room temperature in three dimensions.



Dual Split Vane Technology

The unique dual split vane design allows airflow to be customised to suit different areas of the room, by independently directing air upwards, downwards or to the side.



Natural Flow

To create "healthy" airflow, the most important aspect is that the flow of air feels natural. Mitsubishi Electric's solution to this is Natural Flow, only possible thanks to our technology that freely and flexibly controls airflow.



Quiet Operation

We recognise that noise affects comfort, so we constantly work to make our air conditioners as quiet as possible. With improvements to our fan blades combined with grille shape to our outdoor unit, it's even quieter when in low noise mode. We want you to feel the comfort, not hear it.



Energy Efficient

Impressively low power consumption and quiet yet powerful performance. Ensuring maximum room and energy savings, thereby eliminating the consumption of excessive electricity.



Wi-Fi Control

Unlock the door to smarter cooling and heating for total home comfort. You can control and monitor your air conditioner from anywhere anytime via your smartphone, tablet or online account. Optional upgrade adapter required per unit.

FH SERIES FEATURES

- » Heating & Cooling
- » Inverter Technology
- » Absence Detection
- » Econo Cool
- » Auto Vane
- » Anti-Mould Filter
- » Pure White
- » Compact
- » 24 Hour Timer
- » Auto Restart
- » Quick Clean
- » Weekly Timer
- » Guaranteed Operating Range
Cooling at -10°C ~ 46°C
Heating at -15°C ~ 24°C
- » Vertical & Horizontal Swing
- » Auto Change Over
- » 3D i-See Sensor
- » Direct/Indirect Airflow
- » Natural Flow

EF Series



The streamlined wall-mounted indoor units have eloquent clean lines, expressing sophistication and quality. Available in 3 stylish colours classic white, matte silver and glossy black to provide the best match scenario for diverse interior designs while simultaneously ensuring maximum room comfort and energy savings.

Small Rooms

Unit Dimension: (w) 885 x (d) 195 x (h) 299 mm

MSZ-EF25VE2W/B/S

Cooling Capacity: 2.5kW (min 1.2kW-max 3.4kW)
Cooling Efficiency-EER: 4.59/AEER:4.56

Heating Capacity: 3.2kW (min 1.1kW-max 4.2kW)
Heating Efficiency-COP: 4.57/ACOP:4.55

MSZ-EF35VE2W/B/S

Cooling Capacity: 3.5kW (min 1.4kW-max 4.0kW)
Cooling Efficiency-EER: 3.85/AEER:3.83

Heating Capacity: 4.0kW (min 1.8kW-max 5.5kW)
Heating Efficiency-COP: 4.19/ACOP:4.17



Medium Rooms

Unit Dimension: (w) 885 x (d) 195 x (h) 299 mm

MSZ-EF42VE2W/B/S

Cooling Capacity: 4.2kW (min 0.9kW-max 4.6kW)
Cooling Efficiency-EER: 3.28/AEER:3.27

Heating Capacity: 5.4kW (min 1.4kW-max 6.3kW)
Heating Efficiency-COP: 3.70/ACOP:3.69

MSZ-EF50VE2W/B/S

Cooling Capacity: 5.0kW (min 1.4kW-max 5.4kW)
Cooling Efficiency-EER: 3.21/AEER:3.20

Heating Capacity: 5.8kW (min 1.6kW-max 7.5kW)
Heating Efficiency-COP: 3.71/ACOP:3.70



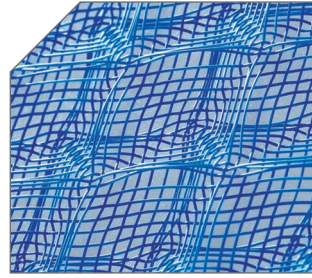
*Large windows and room volume are some of the factors that may effect the performance of the air conditioning unit.

FEATURES



Stylish Design

Developed to complement modern interior room decor, MSZ-EF Series is available in three colours glossy black, matte silver and classic white. Specially chosen to blend in naturally wherever installed.



Platinum Filter

The Nano Platinum Deodorising Filter reduces airborne bacteria while improving air quality.

The optional Electrostatic Anti-Allergy Enzyme Filter effectively combats common allergens.



Energy Efficient

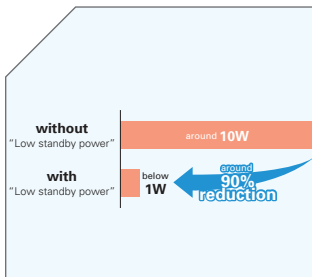
Impressively low power consumption and quiet, yet powerful performance. Ensuring maximum room and energy savings. Thereby eliminating the consumption of excessive electricity.



Wi-Fi Control

Unlock the door to smarter cooling and heating for total home comfort. You can control and monitor your air conditioner from anywhere anytime via your smartphone, tablet or online account.

Optional upgrade adapter required per unit.



Low Stand-By Power

Electrical devices consume electric power even when they are switched off or in standby mode. The EF Series units have a Low Standby Power of below 1 watt reducing the wasted power by around 90%.



Quiet Comfort All Day

Mitsubishi Electric's advanced "Quiet Mode" fan speed setting provides super-quiet operation as low as 21dB for 25/35 models. This unique feature makes the MSZ-EF series ideal for use in any situation.

EF Series units are available in:



Glossy Black



Matte Silver



Classic White

EF SERIES FEATURES

- » Heating & Cooling
- » Inverter Technology
- » Econo Cool
- » Nano Platinum Filter
- » Auto Restart
- » 24 Hour Timer
- » Weekly Timer
- » Self Diagnosis
- » Guaranteed Operating Range
Cooling at -10°C ~ 46°C
Heating at -15°C ~ 24°C
- » Auto Change Over
- » Electrostatic Anti-Allergy Enzyme Filter (Optional)

GL Series



The MSZ-GL units provide excellent energy-savings and operation is impressively quiet.

Small Rooms

Unit Dimension: (w) 799 x (d) 232 x (h) 290 mm

MSZ-GL25VGD

Cooling Capacity: 2.5kW (min 1.1kW-max 3.6kW)
Cooling Efficiency-EER: 5.10/AEER: 5.07
Heating Capacity: 3.2kW (min 1.3kW-max 5.0kW)
Heating Efficiency-COP: 4.85/ACOP: 4.82

MSZ-GL42VGD

Cooling Capacity: 4.2kW (min 0.9kW-max 4.8kW)
Cooling Efficiency-EER: 3.62/AEER: 3.61
Heating Capacity: 5.4kW (min 1.4kW-max 6.0kW)
Heating Efficiency-COP: 3.70/ACOP: 3.69

MSZ-GL35VGD

Cooling Capacity: 3.5kW (min 1.1kW-max 4.1kW)
Cooling Efficiency-EER: 4.12/AEER: 4.10
Heating Capacity: 3.7kW (min 1.6kW-max 5.1kW)
Heating Efficiency-COP: 4.57/ACOP: 4.55



Medium Rooms

Unit Dimension: (w) 923 x (d) 250 x (h) 305 mm

MSZ-GL50VGD

Cooling Capacity: 4.8kW (min 1.5kW-max 6.2kW)
Cooling Efficiency-EER: 4.10/AEER: 4.09
Heating Capacity: 5.8kW (min 1.6kW-max 8.0kW)
Heating Efficiency-COP: 4.23/ACOP: 4.22

MSZ-GL60VGD

Cooling Capacity: 6.0kW (min 1.5kW-max 7.2kW)
Cooling Efficiency-EER: 3.77/AEER: 3.77
Heating Capacity: 6.8kW (min 2.0kW-max 9.3kW)
Heating Efficiency-COP: 4.07/ACOP: 4.06



Large Rooms

Unit Dimension: (w)1100 x (d) 238 x (h) 325 mm

MSZ-GL71VGD

Cooling Capacity: 7.1kW (min 2.4kW-max 8.7kW)
Cooling Efficiency-EER: 3.53/AEER: 3.53
Heating Capacity: 8.0kW (min 2.2kW-max 9.9kW)
Heating Efficiency-COP: 3.83/ACOP: 3.82

MSZ-GL80VGD

Cooling Capacity: 7.8kW (min 2.4kW-max 9.2kW)
Cooling Efficiency-EER: 3.31/AEER: 3.30
Heating Capacity: 9.0kW (min 2.2kW-max 11.0kW)
Heating Efficiency-COP: 3.53/ACOP: 3.52



*Large windows and room volume are some of the factors that may effect the performance of the air conditioning unit.

FEATURES



Quick Clean Filter System

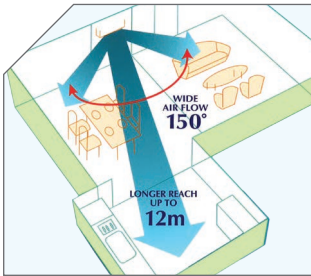
The front panel is easily detached and the air flow vents can be opened without special tools, making cleaning a breeze.



Blue Fin Condenser

Anti-corrosion treatment has been applied to the heat exchanger of the outdoor unit. This coating inhibits corrosion of the aluminum fins; salt in the air causes this especially in coastal areas.

(Corrosion of the heat exchanger will affect the efficiency and performance of the AC).



Wide & Long Airflow

The wide and long airflow modes allow the airflow direction to be adjusted, ensuring every corner of the room is comfortable.

These modes are simply activated at the touch of a button on your remote controller.

(Models 71/80)



i-Save mode

"i-Save" is a setting function that recalls the preferred (preset) temperature by pressing the i-Save button on the remote controller.

This function contributes to energy savings when, for example, leaving the room or going to bed.



Quiet Operation

A "Quiet Mode" setting has been added to the fan speed settings, ensuring super quiet operation below 19dB for model sizes 35 and under. Perfect for the bedroom; it's so quiet you'll check to see if it's on.

(Models 25/35)



Energy Efficient

We strive for the perfect balance of performance, reliability, low power consumption and a long operational lifespan for all our products. The airflow speed and temperature are adjusted to prevent overheating/cooling, thereby eliminating the use of excessive electricity.



R32 Refrigerant

R32 is a refrigerant with just one-third the global warming potential of R410A, meaning less risk of harm to the environment.

R32 enables increased energy efficiency and is said to be the next generation in refrigerants.



Wi-Fi Control

Unlock the door to smarter cooling and heating for total home comfort. You can control and monitor your air conditioner from anywhere anytime via your smartphone, tablet or online account.

Optional upgrade adapter required per unit.

GL SERIES FEATURES

- » Heating & Cooling
- » Inverter Technology
- » Econo Cool
- » Auto Vane
- » Pure White
- » Demand Response Capable
- » Low Temperature Cooling
- » Weekly Timer
- » Auto Restart
- » Quick Clean
- » Auto Fan Speed
- » 24 Hour Timer
- » Auto Change Over
- » Vertical Swing
- (Models 71/80)
- » Anti-Allergy Enzyme Filter
- » Guaranteed Operating Range
- Cooling at -10°C ~ 46°C
- Heating at -15°C ~ 24°C
- » Horizontal Swing

KJ Series

FLOOR STANDING UNIT



High capacity, simple, flat design in harmony with living spaces raises the value of your room to the next level.

Small Rooms

Unit Dimension: (w) 800 x (d) 285 x (h) 550 mm

MFZ-KJ25VE

Cooling Capacity: 2.5kW (min 0.5kW~max 3.4kW)
Cooling Efficiency-EER: 4.63/AEER:4.62
Heating Capacity: 3.4kW (min 1.2kW~max 4.6kW)
Heating Efficiency-COP: 4.42/ACOP:4.41

MFZ-KJ35VE

Cooling Capacity: 3.5kW (min 0.5kW~max 3.7kW)
Cooling Efficiency-EER: 3.89/AEER:3.88
Heating Capacity: 4.3kW (min 1.2kW~max 5.8kW)
Heating Efficiency-COP: 3.91/ACOP:3.90



Medium Rooms

Unit Dimension: (w) 840 x (d) 330 x (h) 880 mm

MFZ-KJ50VE

Cooling Capacity: 5.0kW (min 1.6kW~max 5.7kW)
Cooling Efficiency-EER: 3.57/AEER:3.56
Heating Capacity: 5.8kW (min 2.2kW~max 8.2kW)
Heating Efficiency-COP: 3.87/ACOP:3.86

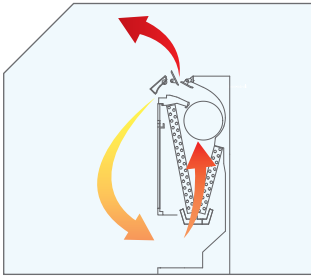
MFZ-KJ60VE

Cooling Capacity: 6.0kW (min 1.6kW~max 6.8kW)
Cooling Efficiency-EER: 3.42/AEER:3.43
Heating Capacity: 6.8kW (min 2.2kW~max 9.1kW)
Heating Efficiency-COP: 3.60/ACOP:3.59



*Large windows and room volume are some of the factors that may effect the performance of the air conditioning unit.

FEATURES



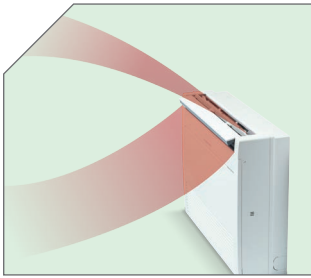
Rapid Heating Technology

KJ Series ensures the perfect room temperature is reached faster with Rapid Heating Technology. Warm air is blown out in a downward direction and then sucked back into the unit to quickly raise the temperature of the air being blown out.



Slim, Sophisticated Design

Floor Consoles feature a new contemporary sleek design that harmonises with all types of interiors.



Multi Flow Vane

A powerful blower provides optimum distribution of air from the upper and lower air outlets. The result is a comfortable environment with an even temperature throughout the room. Three uniquely shaped vanes control the airflow and allow the freedom to customise comfort according to preferences.



i-Save mode

"i-Save" is a setting function that recalls the preferred (preset) temperature by pressing the i-Save button on the remote controller.

This function contributes to energy savings when, for example, leaving the room or going to bed.



Wi-Fi Control

Unlock the door to smarter cooling and heating for total home comfort. You can control and monitor your air conditioner from anywhere anytime via your smartphone, tablet or online account.

Optional upgrade adapter required per unit.

KJ SERIES FEATURES

- » Heating & Cooling
- » Inverter Technology
- » Only 19dB (KJ 25/35)
- » Econo Cool
- » Nano Platinum Filter
- » Horizontal Auto Vane
- » Horizontal Swing
- » Pure White
- » Built-In Weekly Timer
- » 24 Hour Timer
- » Guaranteed Operating Range
Cooling at -10°C ~ 46°C
Heating at -15°C ~ 24°C
- » Auto Restart
- » Self Diagnosis
- » Error Logs
- » Vertical Airflow
- » Easy Installation
(with leveling plate)
- » Emergency Operation Switch
- » Anti-Allergy Enzyme Filter

SLZ Series

CEILING-CASSETTE



Our compact, lightweight ceiling cassette units with 4-way airflow provide maximum comfort by evenly distributing airflow throughout the entire room.

Small Rooms

Unit Dimension: (w) 570 x (d) 570 x (h) 208 mm
Panel Dimension: (w) 650 x (d) 650 x (h) 20 mm

Medium Rooms

Unit Dimension: (w) 570 x (d) 570 x (h) 208 mm
Panel Dimension: (w) 650 x (d) 650 x (h) 20 mm

SLZ-KA25VAD

Cooling Capacity: 2.3kW (min 1.5kW-max 3.2kW)
Cooling Efficiency-EER: 3.83/AEER:3.65

Heating Capacity: 3.1kW (min 1.3kW-max 4.5kW)
Heating Efficiency-COP: 3.78/ACOP:3.66

SLZ-KA50VAD

Cooling Capacity: 4.2kW (min 2.3kW-max 5.2kW)
Cooling Efficiency-EER: 3.31/AEER:3.23

Heating Capacity: 4.5kW (min 1.7kW-max 6.5kW)
Heating Efficiency-COP: 3.28/ACOP:3.22

FEATURES



Air Cleaning Filter

This built-in filter removes dust and other particulates, keeping the air purified and deodorised. The long-life filter in SLZ Series air conditioners can be used for approximately 2,500 hours with simple maintenance.



Compact Design

A design that is a perfect match for ceilings made using 2'x2' construction. The 4-way air outlet provides maximum comfort with evenly distributed airflow.

SLZ SERIES FEATURES

- » Heating & Cooling
- » PAM Control
- » Long Life (2,500 Hour Filter)
- » Fresh Air Intake
- » Pure White
- » Auto Vane
- » Vertical Swing
- » 12 Hour Timer (SLZ-KA VAL)
- » Auto Restart
- » Weekly Timer (SLZ-KA VAQ) (PAR-33MAA)
- » Guaranteed Operating Range
Cooling at -10°C ~ 46°C (KA25)
Cooling at -15°C ~ 43°C (KA50)
Heating at -15°C ~ 24°C
- » Controller (SLZ-KA VAQ)
- » Optional M-NET Connection
- » Wi-Fi Control (Optional upgrade adapter required per unit)
- » Self Diagnosis (with wired R/C check code)
- » Error Logs

SEZ Series

CEILING-CONCEALED



Our concealed-ceiling unit has a reduced installation space height with impressively quiet operation. Comfort for the living room, bedroom and other living spaces.

Small Rooms

Unit Dimension: (w) 790 X (d) 700 X (h) 200mm - SEZ-KD25VA
Unit Dimension: (w) 990 X (d) 700 X (h) 200mm - SEZ-KD35VA

Medium Rooms

Unit Dimension: (w) 990 x (d) 700 x (h) 200 mm

Large Rooms

Unit Dimension: (w) 1190 x (d) 700 x (h) 200 mm

SEZ-KD25VAD

Cooling Capacity: 2.5kW (min 1.5kW-max 3.2kW)
Cooling Efficiency-EER: 3.33/AEER:3.21
Heating Capacity: 3.0kW (min 1.3KW-max 4.5kW)
Heating Efficiency-COP: 3.61/ACOP:3.49

SEZ-KD35VAD

Cooling Capacity: 3.7kW (min 1.4kW-max 3.9kW)
Cooling Efficiency-EER: 3.39/AEER:3.31
Heating Capacity: 4.2kW (min 1.7KW-max 5.0kW)
Heating Efficiency-COP: 3.72/ACOP:3.62

SEZ-KD50VAD

Cooling Capacity: 5.1kW (min 2.3kW-max 5.6kW)
Cooling Efficiency-EER: 3.11/AEER:3.05
Heating Capacity: 6.4kW (min 1.7KW-max 7.2kW)
Heating Efficiency-COP: 3.54/ACOP:3.48

SEZ-KD60VAD

Cooling Capacity: 5.6kW (min 2.3kW-max 6.3kW)
Cooling Efficiency-EER: 3.16/AEER:3.11
Heating Capacity: 7.4kW (min 2.5KW-max 8.0kW)
Heating Efficiency-COP: 3.61/ACOP:3.55

SEZ-KD71VAD

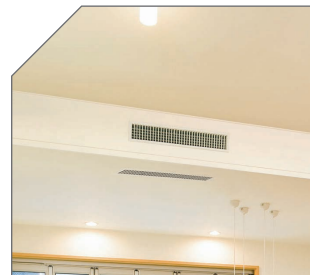
Cooling Capacity: 6.5kW (min 2.8kW-max 8.3kW)
Cooling Efficiency-EER: 3.16/AEER:3.10
Heating Capacity: 8.1kW (min 2.6KW-max 10.4kW)
Heating Efficiency-COP: 3.72/ACOP:3.66

FEATURES



Quiet Operation

Offering whisper-quiet operation at a hushed noise level of 23dB (SEZ-KD25/35), creating a calm and comfortable environment. So quiet you'll check to see if they're on.



Compact Ceiling-Concealed Units

With a slim size of 200mm in height the concealed unit fits easily and discreetly into ceiling spaces. Allowing you to create a high class interior.

SEZ SERIES FEATURES

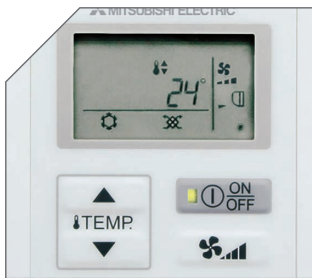
- » Heating & Cooling
- » Wi-Fi (Optional upgrade adapter required per unit)
- » Weekly Timer (SEZ-VAQ) (PAR-33MAA)
- » Guaranteed Operating Range
Cooling at -10°C ~ 46°C (KA25/KA35)
Cooling at -15°C ~ 43°C (KA50)
Cooling at -15°C ~ 46°C (KA60/71)
Heating at -15°C ~ 24°C
- » Optional M-NET Connection
- » Flare Connection
- » Error Logs
- » Auto Restart
- » Self Diagnosis (with wired R/C check code)

Controls

HANDHELD CONTROLLERS & WALL MOUNTED CONTROLS

Making the most out of your air conditioner all starts with the controls, these allow you to create the comfort levels that match your demands.

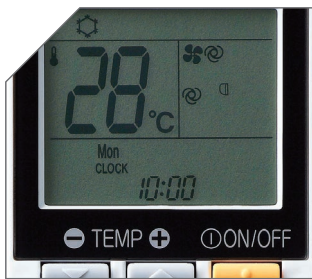
As air conditioners are becoming more advanced, so are the controls, to allow accuracy and ease of use to maximise the functionality of your air conditioner. The availability of handheld controllers, wired wall mounted controller PAR-33MAA and Wi-Fi Control not only provide you with a wide variety of choice, but also allow optimised programming efficiency.



PAC-YT52CRA Controller

To simplify operation of the system, the range of controls has been limited to On/Off, mode, room temperature, fan speed and additional vane control for high walls, cassettes, and under ceilings units. It also has the ability to sense the room ambient via the inbuilt thermostat. This means you are sensing the actual space temperature where the end user is.

Optional upgrade adapter required per unit.



Weekly Remote Controller

With an easy to read display and a variety of operating modes at the touch of a button, this controller features a weekly and 24 hour timer, On/Off timer to set operating times on a daily basis. The 'i-Save' mode recalls the preset temperature. This remote is standard for the GL Series, EF series and FH series.



7 Day Wired Controller

The wall mounted 7 day controller is an optional upgrade with the ability to connect to all Mitsubishi Electric systems listed in this brochure. The PAR-33MAA Controller allows you to program up to 8 stop/start patterns per day for up to 7 days at a time.

Optional upgrade adapter required per unit.



WI-FI CONTROL

Wi-Fi Control unlocks the door to smarter heating or cooling, for total home comfort wherever you are.

This innovative technology connects your domestic high wall, floor mounted and ducted air conditioner to your smartphone, tablet or online account, giving you the freedom to fully control each unit on-the-go via an Internet connection from anywhere in the world.

Optional upgrade adapter required per unit.

Wi-Fi CONTROL

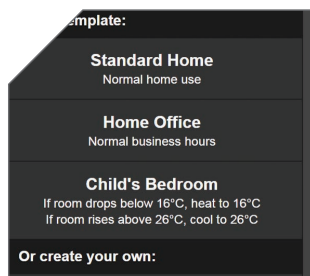
WI-FI FEATURES

- » View & control from anywhere in the world
- » Enhance energy savings
- » Set up 7 day weekly schedule
- » Wireless connection using WPS



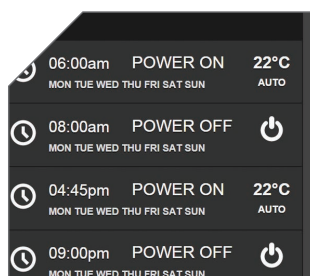
Superior Customisation

This innovative technology places multiple functions of your air conditioner at your fingertips. Turning the unit On/Off, adjusting set temperature, changing mode, fan speed and airflow direction are all possible.



Develop Operating Rules

Tailor your system to always meet your needs. Unlock the full potential of your air conditioner, program your system to automatically turn On/Off at specific times, change settings, and develop temperature rules to ensure superior comfort day after day.



Control Multiple Units

Customise the settings of each air conditioner in your home. Purchase multiple adapters to manage all air conditioners independently on the same account to ensure complete control over your system. The result is a tailored system to your needs.

FUNCTIONS

Energy Saving

3D i-See Sensor

The "3D i-See Sensor" monitors the whole room in sections and directs the airflow to areas of the room where the temperature does not match the temperature setting. For example when cooling the room, if the middle of the room is detected to be hotter, more airflow is directed towards it. This eliminates unnecessary heating/cooling and contributes to lower electricity costs.

DC Inverter

Inverter technology matches compressor speed to your indoor heating or cooling requirements. PAM (Pulse Amplitude Modulation) provides higher efficiency within the inverter by controlling the amount of power drawn.

Econo Cool Energy-Saving Feature

"Econo Cool" is an intelligent temperature control feature that adjusts the amount of air directed towards the body based on the air-outlet temperature. The setting temperature can be raised by as much as 2 degrees without any loss in comfort, thereby realising a 20% gain in energy efficiency. (Function only available during manual cooling operation.)

"i-Feel" Control

The "i-Feel" fuzzy-logic control memorises the most desirable temperature setting. If the "TOO WARM" or "TOO COOL" button on the remote controller is pressed, the system adds the choice to the control memory and adjusts the temperature so that the most comfortable temperature is provided. That temperature setting is used the next time the unit is turned on.

PAM (Pulse Amplitude Modulation)

PAM is a technology that controls the current waveform so that it resembles the supply voltage wave, thereby reducing loss and realising more efficient use of electricity. Using PAM control, 98% of the input power supply is used effectively.

Comfort

Auto Vane

The vane closes automatically when the air conditioner is not running, concealing the air outlet and creating a flat surface that is aesthetically appealing.

Swing (Vertical Vane)

The air outlet vane swings from side to side so that the airflow reaches every part of the room.

Swing (Horizontal Vane)

The air outlet vane swings up and down so that the airflow is spread evenly throughout the room.

Wide and Long Airflow

The wide and long airflow function is especially beneficial for large spaces, helping to ensure that air is well circulated and reaches every corner of the room.

Wide Airflow

This unique airflow system distributes air horizontally over a wide-ranging 150° in heating mode and 100° in cooling mode. Simply press the Wide Swing icon on the remote controller to select the desired airflow from seven different patterns.

Long Airflow

Use this function to ensure that the airflow circulates to areas far across the room. Press the Long Airflow icon on the remote controller to extend up to as far as 12 metres from the unit.

Air Quality

Air Cleaning Filter

The filter is charged with static electricity, enabling it to attract and capture dust particulates that regular filters don't.

Anti-Allergy Enzyme Filter

The anti-allergy enzyme filter works to trap allergens such as molds and bacteria and decompose them using enzymes retained in the filter.

Catechin Filter

Catechin is a bioflavonoid by-product of green tea with both antiviral and antioxidant qualities. It also has an excellent deodorising effect, which is why Mitsubishi Electric uses the compound in its air conditioner filters. In addition to improving air quality, it prevents the spreading of bacteria and viruses throughout the room. Easily removed for cleaning and maintenance, when the filter is washed regularly the deodorising action is rated to last more than 10 years.

Electro Static Anti-Allergy Enzyme Filter

This function utilises both the air cleaning filter and anti-allergy enzyme filter.

Fresh-Air Intake

Indoor air quality is enhanced by the direct intake of fresh exterior air.

Nano Platinum Filter

The filter has a large capture area and incorporates nanometre-sized platinum-ceramic particles that work to kill bacteria and deodorise the circulating air. Better dust collection than conventional filters is also ensured.

Plasma Duo Filter Systems

Units are equipped with a pre-filter and two special filters that perform plasma air cleaning and plasma purification functions (Plasma Duo). The plasma system removes bad odours and bacterial particulates of micron and nanometre-size from the air.

Convenience

Ampere Limit Adjustment

Dipswitch settings can be used to adjust the maximum electrical current for operation. This function is highly recommended for managing energy costs.

*Maximum capacity is lowered with the use of this function.

Auto Changeover

The air conditioner automatically switches between heating and cooling modes to maintain the desired temperature.

Auto Restart

Especially useful at the time of power outages, the unit turns back on automatically when power is restored.

Auto Fan Speed Mode

The airflow speed mode adjusts the fan speed of the indoor unit automatically according to the present room conditions.

“i-Save” Mode

“i-Save” is a simplified setting function that recalls the preferred (preset) temperature by pressing a single button on the remote controller. Press the same button twice in repetition to immediately return to the previous temperature setting. Using this function contributes to comfortable waste-free operation, realising the most suitable air conditioning settings and saving on power consumption when, for example, leaving the room or going to bed.

Low-Temperature Cooling

Intelligent fan speed control in the outdoor unit ensures optimum performance even when the outside temperature is low.

On/Off Operation Timer

Use the remote controller to set the times for the air conditioner to turn On/Off.

Operation Lock

To accommodate specific-use applications, cooling or heating operation can be specified when setting the control board of the outdoor unit. A convenient option when a system needs to be configured for exclusive cooling or heating service.

System Control

COMPO (Simultaneous Multi-Unit Operation)

Multiple indoor units can be connected to a single outdoor unit. (Depending on the unit combination, connection of up to four units is possible; however, all indoor units must operate at the same settings.)

M-Net Connection

Units can be connected to MELANS system controllers (M-NET controllers) such as the AE-200E.

MXZ Connection

Connection to the MXZ multi-split outdoor unit is possible.

PAR-33MAA Control

Units are compatible for use with the PAR-33MAA remote controller, which has a variety of management functions including a weekly timer.

System Group Control

The same remote controller is capable of controlling the operational status of up to 16 refrigerant systems.

Wi-Fi Interface

Interface enabling users to control air conditioners and check operating status via devices such as personal computers, tablets and smartphones.

Optional upgrade adapter required per unit.

Installation & Maintenance

Cleaning-Free Pipe Reuse*

The application of pipe reuse technology such as Mitsubishi Electric's original hard alkyl benzene oil makes it possible to reuse the same piping, thereby allowing cleaning-free renewal of air conditioning systems that use R22 refrigerant.

*Cleaning-Free Pipe Reuse Technology specifically applies to piping which is contaminated with chlorine residue, iron particles and slime. These contaminants are typically found in which the previous system utilised R22 refrigerant. Cleaning-Free Pipe Reuse Technology cannot be used to clean pipes which contain foreign matter other than what can be generated from an operating air conditioner.

Error Log Function

Operation errors are recorded, allowing confirmation when needed.

Flare Connection

Flare connection to cooling pipe work is possible.

Quick Clean

The cover panel can be quickly removed for washing and the airflow vents can be opened without any special tools, making it easy to clean the inside of the air conditioner in minutes. Periodic cleaning of the air conditioner is recommended to maintain optimum operating efficiency and energy savings.

Self-Diagnostic Function (Check Code Display)

Check codes are displayed on the remote controller or the operation indicator to inform the user of malfunctions detected.

SPECIFICATIONS

SERIES			Deluxe Wall Mounted MSZ-FH Series			Signature Wall Mounted MSZ-EF Series			
Model			MSZ-FH25VE-A1 MUZ-FH25VE-A1	MSZ-FH35VE-A1 MUZ-FH35VE-A1	MSZ-FH50VE-A1 MUZ-H50VE-A1	MSZ-EF25VE2W/B/S MUZ-EF25VE	MSZ-EF35VE2W/B/S MUZ-EF35VE	MSZ-EF42VE2W/B/S MUZ-EF42VE	MSZ-EF50VE2W/B/S MUZ-EF50VE
Cooling Performance	Nominal Total Cooling* ¹	kW	2.5 (1.4-3.5)	3.5 (0.8-4.0)	5.0 (1.9-6.0)	2.5 (1.2-3.4)	3.5 (1.4-4.0)	4.2 (0.9-4.6)	5.0 (1.4-5.4)
	AEER/EER		4.60 / 4.90	3.92 / 4.07	3.54 / 3.62	4.56/4.59	3.83/3.85	3.27/3.28	3.20/3.21
	Star Rating		5.5	3.5	2.5	4.5	3	2	1.5
	Total Input (Min-Rated-Max)	kW	0.210 - 0.510 - 0.900	0.170 - 0.860 - 1.150	0.410 - 1.380 - 2.250	0.240 - 0.545 - 1.150	0.210 - 0.910 - 1.500	0.160 - 1.280 - 1.930	0.300 - 1.580 - 1.980
	Running Current (Rated)	A	2.7	4.0	6.1	2.9	4.2	5.7	6.9
Heating Performance	Nominal Heating Capacity* ¹	kW	3.2 (1.8-5.5)	4.0 (1.0-6.3)	6.0 (1.7-8.7)	3.2 (1.1-4.2)	4.0 (1.8-5.5)	5.4 (1.4-6.3)	5.8 (1.6-7.5)
	ACOP/COP		5.21/5.52	4.8/5.0	3.96/4.05	4.55/4.57	4.17/4.19	3.69/3.70	3.70/3.71
	Star Rating		6	5	3.5	4.5	4	3.0	2.5
	Total Input (Min-Rated-Max)	kW	0.280 - 0.580 - 2.000	0.270 - 0.800 - 2.000	0.430 - 1.480 - 3.060	0.250 - 0.700 - 1.170	0.280 - 0.955 - 1.530	0.260 - 1.460 - 2.050	0.310 - 1.565 - 2.640
	Running Current (Rated)	A	2.9	3.8	6.5	3.5	4.4	6.5	7.0
Airflow	Airflow (Cooling/Heating)	L/s	65-193/67-220	65-193/67-220	107-207/95-243	67-175/67-198	67-175/67-212	97-172/92-212	97-183/107-220
Indoor Unit	Dimensions (H x W x D)	mm	305 (+17) x 925 x 234	305 (+17) x 925 x 234	305 (+17) x 925 x 234	299 x 885 x 195	299 x 885 x 195	299 x 885 x 195	299 x 885 x 195
	Unit Weight	kg	13.5	13.5	13.5	11.5	11.5	11.5	11.5
	Noise Level (SPL) in Cooling	dB(A)	20 - 23 - 29 - 36 - 42	21 - 23 - 29 - 36 - 42	27-31 - 35 - 39 - 44	21 - 23 - 29 - 36 - 42	21 - 24 - 29 - 36 - 42	28 - 31 - 35 - 39 - 42	30 - 33 - 36 - 40 - 43
	Noise Level (SPL) in Heating	dB(A)	20 - 24 - 29 - 36 - 44	21 - 24 - 29 - 36 - 44	25 - 29 - 34 - 39 - 46	21 - 24 - 29 - 37 - 45	21 - 24 - 30 - 38 - 46	28 - 30 - 35 - 41 - 48	30 - 33 - 37 - 43 - 49
Outdoor Unit	Dimensions (H x W x D)	mm	550 x 800 x 285	550 x 800 x 285	880 x 840 x 330	550 x 800 x 285	550 x 800 x 285	550 x 800 x 285	880 x 840 x 330
	Weight	kg	37	37	55	30	35	35	54
	Noise Level (SPL/PWL) - in Cooling	dB(A)	46/60	49/61	51/64	47/58	49/61	50/62	52/65
	Noise Level (SPL/PWL) in Heating	dB(A)	49/61	50/62	54/64	48/60	50/63	51/64	52/66
Electrical	Volt / Phase		240/1			240/1			
Refrigerant	Pipe Size (Gas) OD	mm (Inch)	9.52 (3/8)	9.52 (3/8)	12.7 (1/2)	9.52 (3/8)	9.52 (3/8)	9.52 (3/8)	12.7 (1/2)
	Pipe Size (Liquid) OD	mm (Inch)	6.35 (1/4)	6.35 (1/4)	6.35 (1/4)	6.35 (1/4)	6.35 (1/4)	6.35 (1/4)	6.35 (1/4)
	Max Pipe Run/Height	m	20/12	20/12	30/15	20/12	20/12	20/12	30/15
	Pre-Charged Refrigerant	kg	1.15 (7m)	1.15 (7m)	1.55 (7m)	0.8 (7m)	1.15 (7m)	1.15 (7m)	1.45 (7m)
	Add. Charge	g/m	30	30	20	30	30	30	20
Guaranteed Operating Range	Outdoor - Cooling	°CDB	-10 ~ 46	-10 ~ 46	-10 ~ 46	-10 ~ 46			
	Outdoor - Heating	°CDB	-15 ~ 24	-15 ~ 24	-15 ~ 24	-15 ~ 24			
MCA	A	9.6	10	14	7.3	8.5	9.5	12.4	
Breaker Size	A	10	10	16	10	10	10	16	

Notes:

*1 Nominal conditions cooling: EAT 27°CDB/19°CWB, Ambient 35°CDB. Rated conditions cooling: EAT 24°CDB/17°CWB, ambient 35°CDB.

Nominal conditions heating: EAT 20°CDB/15°CWB, Ambient 7°CDB/6°CWB.

2 Rated Load Amps (RLA) is based on nominal conditions. Use Maximum Circuit Amps (MCA) for power supply infrastructure sizing, etc.

(Rating Conditions) Cooling: Indoor 27°C, D.B./19°C, W.B.
Outdoor 35°C, D.B./24°C, W.B.
Heating: Indoor 20°C, D.B./15°C, W.B.
Outdoor 7°C, D.B./6°C, W.B.



MUZ-FH25/35
MUZ-EF25/35/42



MUZ-FH50
MUZ-EF50

Mitsubishi Electric is constantly developing and improving its products. The company reserves the right to make any variation in the technical specification to the equipment described, or to withdraw or replace products without prior notification.

This is a guide only, please refer to the installation and service manuals to confirm the latest specifications or contact your local Mitsubishi Electric office.

SERIES			MSZ-GL Series						
Model			MSZ-GL25VGD MUZ-GL25VGD	MSZ-GL35VGD MUZ-GL35VGD	MSZ-GL42VGD MUZ-GL42VGD	MSZ-GL50VGD MUZ-GL50VGD	MSZ-GL60VGD MUZ-GL60VGD	MSZ-GL71VGD MUZ-GL71VGD	MSZ-GL80VGD MUZ-GL80VGD
Cooling Performance	Nominal Total Cooling ^{*1}	kW	2.5 (1.1-3.6)	3.5 (1.1-4.1)	4.2 (0.9-4.8)	4.8 (1.5-6.2)	6.0 (1.5-7.2)	7.1 (2.4-8.7)	7.8 (2.4-9.2)
	AEER/EER		5.07/5.10	4.10/4.12	3.61/3.62	4.09/4.10	3.77/3.77	3.53/3.53	3.30/3.31
	Star Rating		5.5	3.5	2.5	4.0	3.0	2.5	2.0
	Total Input (Min-Rated-Max)	kW	0.19 - 0.49 - 0.99	0.19 - 0.85 - 1.18	0.17 - 1.16 - 1.90	0.30 - 1.17 - 2.07	0.30 - 1.59 - 2.30	0.48 - 2.01 - 3.20	0.48 - 2.36 - 3.20
	Running Current (Rated)	A	2.6	4.0	5.3	5.2	7.1	8.8	10.8
Heating Performance	Nominal Heating Capacity ^{*1}	kW	3.2 (1.3-5.0)	3.7 (1.6-5.1)	5.4 (1.4-6.0)	5.8 (1.6-8.0)	6.8 (2.0-9.3)	8.0 (2.2-9.9)	9.0 (2.2-11.0)
	ACOP/COP		4.82/4.85	4.55/4.57	3.69/3.70	4.22/4.23	4.06/4.07	3.82/3.83	3.52/3.53
	Star Rating		5.0	4.5	3.0	3.5	3.5	3.0	2.5
	Total Input (Min-Rated-Max)	kW	0.20 - 0.66 - 1.37	0.20 - 0.81 - 1.42	0.19 - 1.46 - 1.90	0.30 - 1.67 - 2.84	0.34 - 1.37 - 2.68	0.42 - 2.09 - 3.65	0.43 - 2.55 - 3.65
	Running Current (Rated)	A	3.5	3.8	6.6	6.1	7.4	9.1	11.3
Airflow	Airflow (Cooling/Heating)	L/s	67-200/62-182	67-200/62-200	77-205/78-205	113-282/127-282	107-268/120-290	153-290/163-315	153 -290/163-315
Indoor Unit	Dimensions (H x W x D)	mm	290 x 799 x 232	290 x 799 x 232	290 x 799 x 232	305 x 923 x 250	305 x 923 x 250	325 x 1100 x 238	325 x 1100 x 238
	Unit Weight	kg	10	10	10	12.5	13	15.5	15.5
	Noise Level (SPL) in Cooling	dB(A)	19 - 24 - 31 - 38 - 44	19 - 24 - 31 - 38 - 44	26 - 29 - 35 - 40 - 46	28 - 33 - 39 - 44 - 49	29 - 37 - 41 - 45 - 49	30 - 37 - 41 - 45 - 49	30 - 37 - 41 - 45 - 53
	Noise Level (SPL) in Heating	dB(A)	19 - 25 - 31 - 38 - 42	19 - 25 - 31 - 38 - 45	26 - 29 - 35 - 40 - 46	28 - 33 - 38 - 43 - 48	30 - 37 - 41 - 45 - 51	30 - 37 - 41 - 45 - 51	30 - 37 - 41 - 45 - 51
Outdoor Unit	Dimensions (H x W x D)	mm	550 x 800 x 285	550 x 800 x 285	550 x 800 x 285	880 x 840 x 330	880 x 840 x 330	880 x 840 x 330	880 x 840 x 330
	Weight	kg	33	33	34	53	53	55	55
	Noise Level (SPL/PWL) - in Cooling	dB(A)	46/59	50/62	51/64	54/69	55/69	56/69	55/69
	Noise Level (SPL/PWL) in Heating	dB(A)	49/59	50/62	52/64	56/69	55/69	55/69	55/69
Electrical	Volt / Phase	230/1							
Refrigerant	Pipe Size (Gas) OD	mm (Inch)	9.52 (3/8)	9.52 (3/8)	9.52 (3/8)	9.52 (3/8)	12.7 (1/2)	12.7 (1/2)	12.7 (1/2)
	Pipe Size (Liquid) OD	mm (Inch)	6.35 (1/4)	6.35 (1/4)	6.35 (1/4)	6.35 (1/4)	6.35 (1/4)	6.35 (1/4)	6.35 (1/4)
	Max Pipe Run/Height	m	20/12	20/12	20/12	30/15	30/15	30/15	30/15
	Pre-Charged Refrigerant	kg	0.97 (10m)	0.97 (10m)	0.97 (10m)	1.2 (15m)	1.25 (15m)	1.5 (15m)	1.5 (15m)
	Add. Charge	g/m	20	20	20	20	20	20	20
MCA	Outdoor - Cooling	°CDB	-10 ~ 46						
	Outdoor - Heating	°CDB	-15 ~ 24						
Breaker Size	A	7.1	7.1	9.5	14.3	14.3	16.5	16.5	
Breaker Size	A	10	10	10	16	16	20	20	

Notes:

- *1 Nominal conditions cooling: EAT 27°CDB/19°CWB, Ambient 35°CDB. Rated conditions cooling: EAT 24°CDB/17°CWB, ambient 35°CDB.
 Nominal conditions heating: EAT 20°CDB/15°CWB, Ambient 7°CDB/6°CWB.
 2 Rated Load Amps (RLA) is based on nominal conditions. Use Maximum Circuit Amps (MCA) for power supply infrastructure sizing, etc.

(Rating Conditions) Cooling: Indoor 27°C, D.B./19°C, W.B.
 Outdoor 35°C, D.B./24°C, W.B.
 Heating: Indoor 20°C, D.B./15°C, W.B.
 Outdoor 7°C, D.B./6°C, W.B.



MUZ-GL25/35/42



MUZ-GL50/60/71/80

Mitsubishi Electric is constantly developing and improving its products. The company reserves the right to make any variation in the technical specification to the equipment described, or to withdraw or replace products without prior notification.

This is a guide only, please refer to the installation and service manuals to confirm the latest specifications or contact your local Mitsubishi Electric office.

SPECIFICATIONS

SERIES			MFZ-KJ Series			
Model			MFZ-KJ25VE MUFZ-KJ25VE	MFZ-KJ35VE MUFZ-KJ35VE	MFZ-KJ50VE MUFZ-KJ50VE	MFZ-KJ60VE MUFZ-KJ60VE
Cooling Performance	Nominal Total Cooling*1	kW	2.5 (0.5-3.4)	3.5 (0.5-3.7)	5.0 (1.6-5.7)	6.0 (1.6-6.8)
	AEER/EER		4.62 - 4.63	3.88 - 3.89	3.56 - 3.57	3.42 - 3.43
	Star Rating		5.0	3.0	2.5	2.0
	Total Input (Min-Rated-Max)	kW	0.15 - 0.54 - 0.91	0.15 - 0.90 - 1.14	0.43 - 1.40 - 1.97	0.43 - 1.75 - 2.40
	Running Current (Rated)	A	2.7	4.2	6.2	7.8
Heating Performance	Nominal Heating Capacity*1	kW	3.4 (1.2-4.6)	4.3 (1.2-5.8)	5.8 (2.2- 8.2)	6.8 (2.2-9.1)
	ACOP/COP		4.41/4.42	3.90/3.91	3.86/3.87	3.59/3.60
	Star Rating		4.0	3.0	3.0	2.5
	Total Input (Min-Rated-Max)	kW	0.36 - 0.77 - 1.40	0.36 - 1.10 - 2.20	0.58 - 1.50 - 3.06	0.58 - 1.89 - 3.70
	Running Current (Rated)	A	3.7	5.0	6.7	8.4
Airflow	Airflow (Cooling/Heating)	L/s	65-137/65-162	65-137/65-162	93-177/100-233	93-250/100-243
Indoor Unit	Dimensions (H x W x D)	mm	600 x 750 x 215	600 x 750 x 215	600 x 750 x 215	600 x 750 x 215
	Unit Weight	kg	15	15	15	15
	Noise Level (SPL) in Cooling	dB(A)	20 - 39	20 - 39	27 - 44	27 - 53
	Noise Level (SPL) in Heating	dB(A)	19 - 41	19 - 41	29 - 50	29 - 51
Outdoor Unit	Dimensions (H x W x D)	mm	550 x 800 x 285	550 x 800 x 285	880 x 840 x 330	880 x 840 330
	Weight	kg	37	37	55	55
	Noise Level (SPL/PWL) - in Cooling	dB(A)	46/59	47/60	49/63	52/65
	Noise Level (SPL/PWL) in Heating	dB(A)	51/62	51/63	52/63	53/65
Electrical	Volt / Phase	230/1				
Refrigerant	Pipe Size (Gas) OD	mm (Inch)	9.52 (3/8)	9.52 (3/8)	12.7 (1/2)	12.7 (1/2)
	Pipe Size (Liquid) OD	mm (Inch)	6.35 (1/4)	6.35 (1/4)	6.35 (1/4)	6.35 (1/4)
	Max Pipe Run/Height	m	20/12	20/12	30/15	30/15
	Pre-Charged R410A	kg	1.1 (7m)	1.1 (7m)	1.5 (7m)	1.5 (7m)
	Add. Charge	g/m	30	30	20	20
Guaranteed Operating Range	Outdoor - Cooling	°CDB	-10 ~ 46	-10 ~ 46	-10 ~ 46	-10 ~ 46
	Outdoor - Heating	°CDB	-15 ~ 24	-15 ~ 24	-15 ~ 24	-15 ~ 24
MCA	A	9.4	9.4	14.0	16.5	
Breaker Size	A	10	10	16	20	

Notes:

- *1 Nominal conditions cooling: EAT 27°CDB/19°CWB, Ambient 35°CDB. Rated conditions cooling: EAT 24°CDB/17°CWB, ambient 35°CDB.
Nominal conditions heating: EAT 20°CDB/15°CWB, Ambient 7°CDB/6°CWB.
- 2 Rated Load Amps (RLA) is based on nominal conditions. Use Maximum Circuit Amps (MCA) for power supply infrastructure sizing, etc.

(Rating Conditions)	Cooling:	Indoor	27°C, D.B./19°C, W.B.
		Outdoor	35°C, D.B./24°C, W.B.
Heating:	Indoor	20°C, D.B./15°C, W.B.	
	Outdoor	7°C, D.B./6°C, W.B.	



MUFG-KJ-25/35



MUFG-KJ-50/60

Mitsubishi Electric is constantly developing and improving its products. The company reserves the right to make any variation in the technical specification to the equipment described, or to withdraw or replace products without prior notification.

This is a guide only, please refer to the installation and service manuals to confirm the latest specifications or contact your local Mitsubishi Electric office.

SPECIFICATIONS

SERIES			Compact Ceiling Cassette SLZ Series		Compact Ceiling Concealed SEZ Series				
Model			SLZ-KA25VAQ/L SUZ-KA25VAD	SLZ-KA50VAQ/L SUZ-KA50VAD	SEZ-KD25VAQ/L SUZ-KA25VAD	SEZ-KD35VAQ/L SUZ-KA35VAD	SEZ-KD50VAQ/L SUZ-KA50VAD	SEZ-KD60VAQ/L SUZ-KA60VAD	SEZ-KD71VAQ/L SUZ-KA71VAD
Cooling Performance	Nominal Total Cooling* ¹	kW	2.3 (1.5-3.2)	4.2 (2.3-5.2)	2.5 (1.5-3.2)	3.7 (1.4-3.9)	5.1 (2.3-5.6)	5.6 (2.3-6.3)	6.5 (2.8-6.3)
	AEER/EER		3.65/3.83	3.23/3.31	3.21/3.33	3.31/3.39	3.05/3.11	3.11/3.16	3.10/3.16
	Star Rating		2.5	2.0	-	-	-	-	-
	Total Input (Rated)	kW	0.60	1.27	0.75	1.09	1.64	1.77	2.06
Heating Performance	Nominal Heating Capacity* ¹	kW	3.1 (1.3-4.5)	4.5 (1.7-6.5)	3.0 (1.3-4.5)	4.2 (1.7-5.0)	6.4 (1.7-7.2)	7.4 (2.5-8.0)	8.1 (2.6-10.4)
	ACOP/COP		3.66/3.78	3.22/3.28	3.49/3.61	3.62/3.72	3.48/3.54	3.55/3.61	3.66/3.72
	Star Rating		3.0	1.5	-	-	-	-	-
	Total Input (Rated)	kW	0.82	1.37	0.83	1.13	1.81	2.05	2.18
Airflow	Airflow (Cooling/Heating)	L/s	133-150-167	133-150-183	92-117-150	117-150-183	167-208-250	200-250-300	200-267-333
	Ext. Static Pressure	Pa	-	-	5-15-35-50	5-15-35-50	5-15-35-50	5-15-35-50	5-15-35-50
Indoor Unit	Dimensions (H x W x D)	mm	208 x 570 x 570	208 x 570 x 570	200 x 790 x 700	200 x 990 x 700	200 x 990 x 700	200 x 1190 x 700	200 x 1190 x 700
	Panel Dimensions (H x W x D)	mm	20 x 650 x 650	20 x 650 x 650	-	-	-	-	-
	Supply Spigot Size (H x W)	mm	-	-	150 x 660	150 x 860	150 x 860	150 x 1060	150 x 1060
	Return Spigot Size (H x W)	mm	-	-	157.5 x 660	157.5 x 860	157.5 x 860	157.5 x 1060	157.5 x 1060
	Unit Weight	kg (Panel)	16.5 (3)	16.5 (3)	18	21	23	27	27
	Noise Level (SPL) - in Cooling/Heating	dB(A)	28-31-37	30-34-39	23-26-30	23-28-33	30-34-37	30-34-38	30-35-40
Outdoor Unit	Dimensions (H x W x D)	mm	550 x 800 x 285	850 x 840 x 330	550 x 800 x 285	550 x 800 x 285	850 x 840 x 330	880 x 840 x 330	880 x 840 x 330
	Weight	kg	30	53	30	33	53	50	53
	Noise Level (SPL/PWL) - in Cooling	dB(A)	46 (59)	53 (68)	46 (59)	47 (61)	53 (68)	55 (69)	55 (69)
	Noise Level (SPL/PWL) in Heating	dB(A)	46 (59)	55 (69)	46 (59)	48 (62)	55 (69)	55 (69)	55 (69)
Electrical	Volt / Phase		240/1	240/1	240/1	240/1	240/1	240/1	240/1
	MCA	A	8.16	16	8.16	9.18	16	14	16.1
	MCB	A	10	20	10	10	20	20	20
	RLA (Cooling/Heating)* ²	A	2.8/3.9	4.8/5.2	3.5/3.9	5.0/5.2	7.4/8.2	7.9/8.7	9.1/9.7
Refrigerant	Pipe Size (Gas) OD	mm (Inch)	9.52 (3/8)	12.7 (1/2)	9.52 (3/8)	9.52 (3/8)	12.7 (1/2)	15.88 (5/8)	15.88 (5/8)
	Pipe Size (Liquid) OD	mm (Inch)	6.35 (1/4)	6.35 (1/4)	6.35 (1/4)	6.35 (1/4)	6.35 (1/4)	6.35 (1/4)	9.52 (3/8)
	Max Pipe Run	m	20	30	20	20	30	30	30
	Max Lift	m	12	30	12	12	30	30	30
	Pre-Charged R410A	kg	0.8 (5.0 m)	1.6 (7.0 m)	0.8 (5.0 m)	1.05 (5.0 m)	1.6 (7.0 m)	1.8 (7.0 m)	1.8 (7.0 m)
	Add. Charge	g/m	30	20	30	30	20	20	55
Guaranteed Operating Range	Outdoor - Cooling	°CDB	-10 ~ 46	-15 ~ 43	-10 ~ 46		-15 ~ 43		-15 ~ 46
	Outdoor - Heating	°CDB	-15 ~ 24	-15 ~ 24	-15 ~ 24		-15 ~ 24		-15 ~ 24

Notes:

*1 Nominal conditions cooling: EAT 27°CDB/19°CWB, Ambient 35°CDB.

Rated conditions cooling: EAT 24°CDB/17°CWB, ambient 35°CDB.

Nominal conditions heating: EAT 20°CDB/15°CWB, Ambient 7°CDB/6°CWB.

2 Rated Load Amps (RLA) is based on nominal conditions. Use Maximum Circuit Amps (MCA) for power supply infrastructure sizing, etc.

3 Optional drain pump for SEZ series: PAC-KE07DM-E.

4 Grille for SLZ-KA VAL series (wireless option): SLP-2ALW. Grille for SLZ-KA VAQ series (wired option): SLP-2AAW (add wired controller PAR-33MAA or PAC-YT52CRA).

5 For VAQ model, add wired controller PAR-33MAA or PAC-YT52CRA.



SUZ-KD25/35VAD



SUZ-KD50VAD



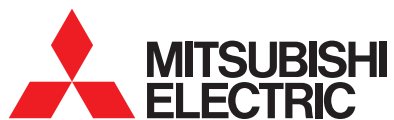
SUZ-KD-60/71VAD

Mitsubishi Electric is constantly developing and improving its products. The company reserves the right to make any variation in the technical specification to the equipment described, or to withdraw or replace products without prior notification.

This is a guide only, please refer to the installation and service manuals to confirm the latest specifications or contact your local Mitsubishi Electric office.

GRID NOTES





For more information contact
www.mitsubishielectric.com.au
Call 1300 722 228

Distributed and guaranteed throughout Australia by
MITSUBISHI ELECTRIC AUSTRALIA PTY. LTD.
(Incorporated in New South Wales) A.B.N. 58 001 215 792



See website for full
Terms and Conditions



Products in this brochure contain refrigerant R410A/R32. Please refer to the specifications before installation and servicing of these products. The purchaser must ensure that the person and/or companies are suitably licensed and experienced are permitted to install, service and repair the air conditioners. Suitable access for warranty and service is required. Specifications, designs and other content appearing in this brochure is current at the time of printing, and is subject to change without notice. Images are representational for illustration purposes. New publication, effective April 2015. Superseding L-179-6-C7458-F SI 1204. PRINTED: SEPTEMBER 2017.