

# Immergas HE 35 External Boiler

Supplied by:

**Hunt Heating**

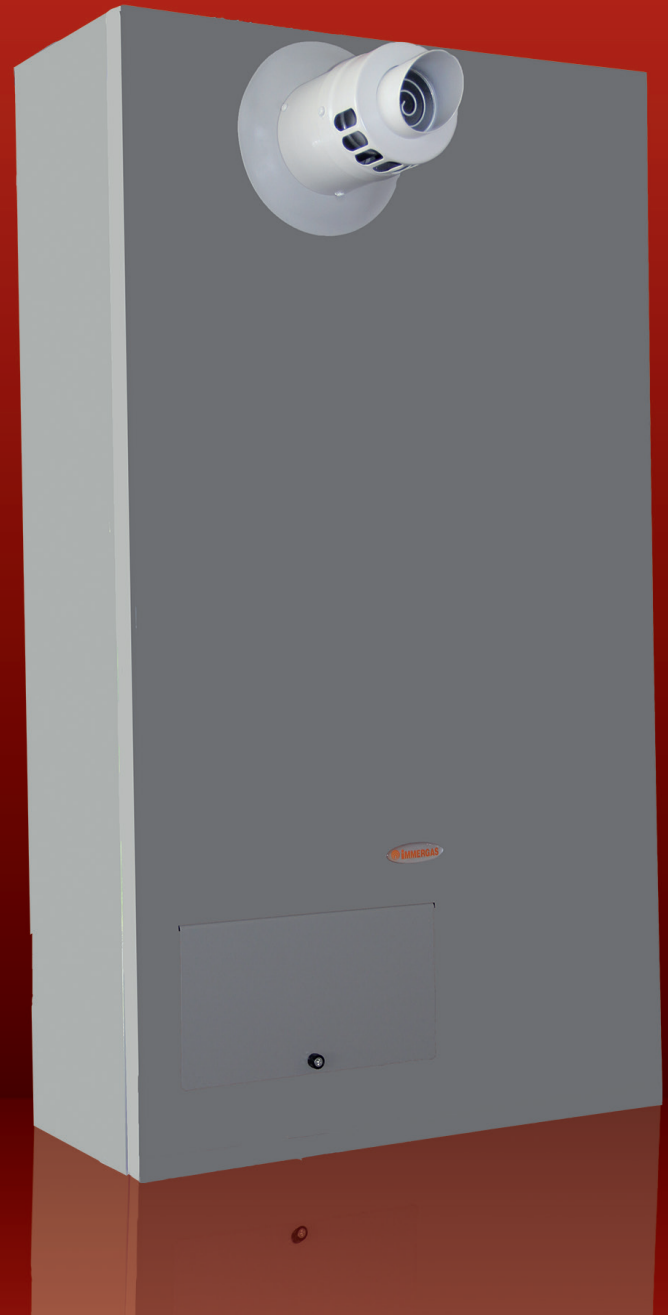
Wall-hung condensing boiler for outdoor installation, for high temperature.

- Heat output of 35 kW
- Compact dimensions
- Pre-arranged for functioning in multi-zone heating systems
- Easy to use boiler interface
- Automatic system by-pass
- Diagnostic and performance display
- Intelligent External Controller CARV2 with outside sensor (optional)
- Horizontal flue kit as standard
- High performance Grundfos 7m pump
- Available in Natural Gas and Universal LPG Models

CAR<sup>v2</sup>



EXTERNAL SENSOR



## MEASUREMENTS

1000 x 555 x 255 (H x W x D) mm  
Empty appliance weight - 53 kg

## MAIN FLUE KITS

Vertical concentric kit 60/100 - 3.023758

## MAIN OPTIONS

CAR<sup>v2</sup> - 3.021395  
External Sensor - 3.014083  
Storage tank connection kit - 3.020934  
Anti-freeze protection (-15°C) - 3.017324

**Showroom** 11 Fiveways Boulevard Keysborough VIC 3173

**Phone** 1300 00 1800 **Fax** (+613) 9798 5133

**Email** enquiries@huntheat.com.au **Website** www.huntheat.com.au



# Immergas HE 35 External Boiler

Technical Data

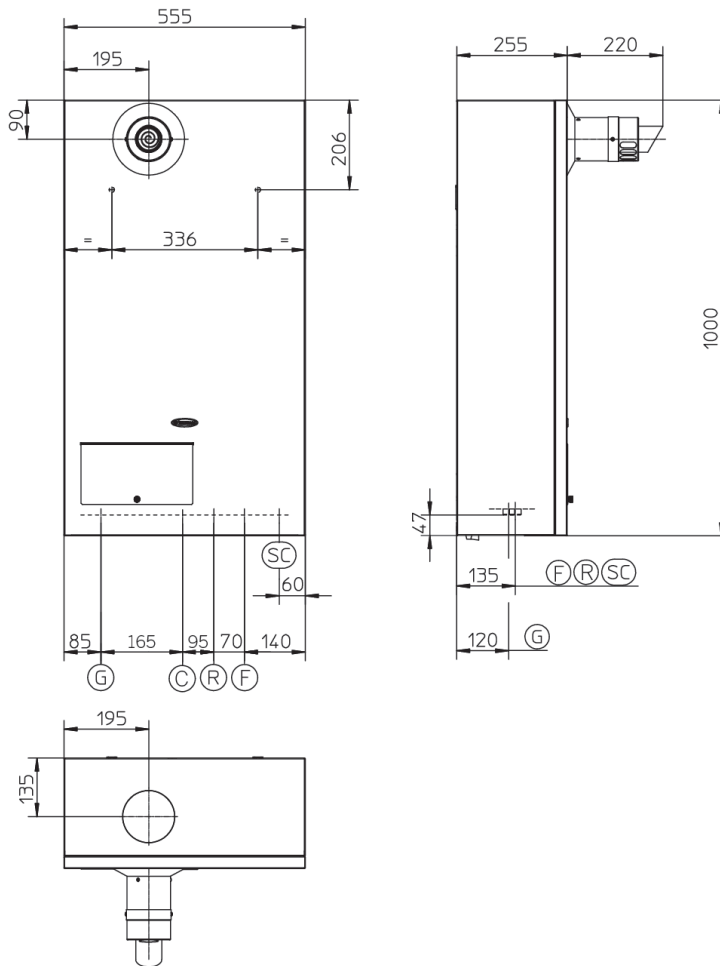
Model	Code NG./LPG	C.H. heat output kW	Efficiency at nom. heat output	Protection index	Frost protection
HE 35 kW	IMG HE 35 E NG IMG HE 35 E LPG	35	97.3%	IPX5D	-5°C

## COMBUSTION PARAMETERS

		NG (G20)	LPG (G30)
Supply Pressure	kPa	1.0	2.8
Flue temperature at nominal output	°C	67	68

## TECHNICAL DATA

Heat output NG	mJ/h (kW)	126 (30.0)
Heat output LPG	mJ/h (kW)	130 (30.0)
Burner pressure maximum NG/LPG	kPa	0.70/2.10
Burner pressure minimum NG/LPG	kPa	0.19/0.55
Efficiency 80/60 Nom./Min.	%	97.3/92.9
Efficiency 50/30 Nom./Min.	%	102.0/99.1
Adjustable central heating temperature	°C	35-85
Expansion vessel factory-set pressure	bar	1
Pressure relief setting	bar (psi)	3 (44)
Expansion vessel capacity	L	10
Head available with 1000 l/h flow rate	kPa (m H <sub>2</sub> O)	30.2 (3.1)
Electrical connection	V/Hz	230/50
Installed electric power	W	175
Maximum flue length 60/100	m	V 4.7/H 3.0
Maximum flue length 80/125	m	V12.2/ H 7.3
Maximum flue length 80/80	m	V40*/H 20*



**Key:**

- G - Gas supply (not supplied as standard)
- R - Return - CH
- F - Flow - CH
- SC - Condensate drain (supplied as standard)  
(minimum internal diameter Ø13 mm)
- C - Cold fill

Height (mm)	Width (mm)	Depth (mm)
1000	555	255
CONNECTIONS		
COLD INLET	GAS	SYSTEM
C	G	R F
1/2"	3/4"	3/4" 3/4"



Hunt Heating.  
**The smart choice.**  
Experts in Domestic and Commercial Hydronic Heating.