

## Immergas SE System External Boiler

Supplied by:

**Hunt Heating**

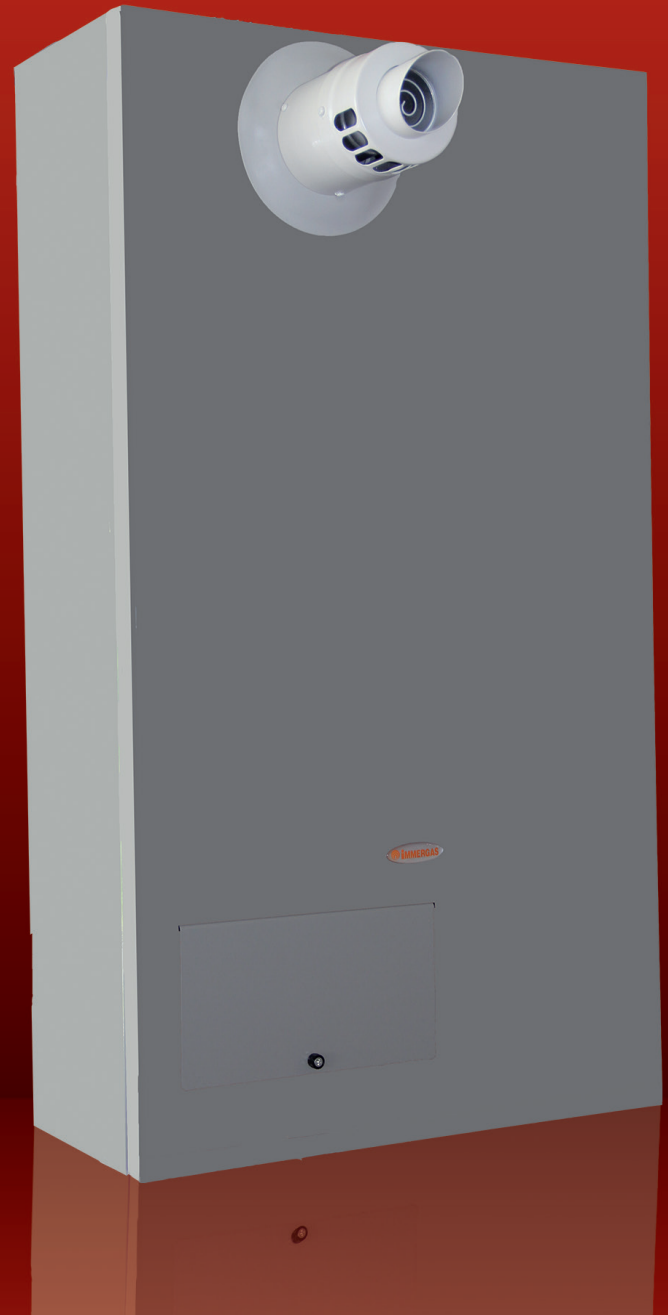
Wall hung traditional hydronic system boiler for external installation

- Sealed room fan assisted model with a 36 kW heat output
- Compact dimensions
- Automatic system by-pass
- D.H.W. Storage Tank (optional)
- Electronic control board microprocessor driven
- Electronic ignition and full modulation
- Diagnostic and performance display
- Intelligent External Controller CAR<sup>V2</sup> with outside sensor (optional)
- Standard frost protection up to -5°C
- Horizontal flue kit as standard
- High performance Grundfos 7m pump
- Available in Natural Gas and Universal LPG Models

CAR<sup>V2</sup>



EXTERNAL SENSOR



### MEASUREMENTS

1000 x 555 x 255 (H x W x D) mm  
Empty appliance weight - 53 kg

### MAIN FLUE KITS

Vertical concentric kit 60/100 - 3.023759

### MAIN OPTIONS

CAR<sup>V2</sup> - 3.021395  
External Sensor - 3.014083  
Storage tank connection kit - 3.020934

**Showroom** 11 Fiveways Boulevard Keysborough VIC 3173

**Phone** 1300 00 1800 **Fax** (+613) 9798 5133

**Email** enquiries@huntheat.com.au **Website** www.huntheat.com.au



# Immergas SE System External Boiler

Technical Data

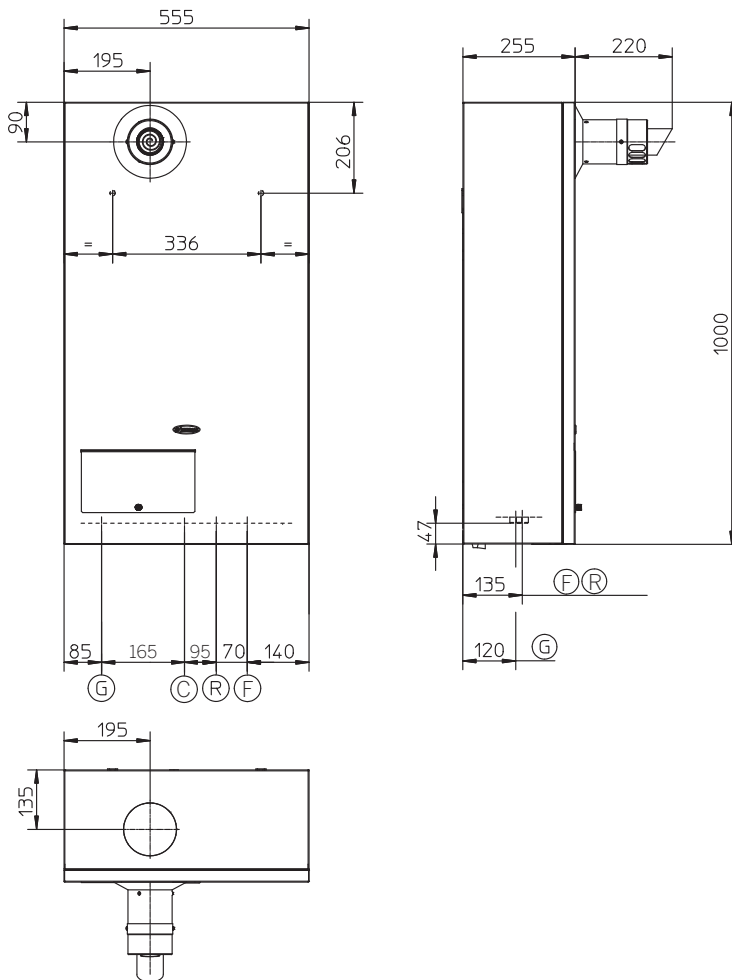
Model	Code NG./LPG	Heat output kW	Efficiency at nom. heat output	Protection index
SE 36 kW	IMG SE 36 E NG IMG SE 36 E LPG	36	87.3%	IPX5D

## COMBUSTION PARAMETERS

		NG (G20)	LPG (G30)
Supply Pressure	kPa	1.0	2.8
Flue temperature at nominal output	°C	67	68

## TECHNICAL DATA

Heat output NG	mJ/h (kW)	128.5 (35.7)
Heat output LPG	mJ/h (kW)	128.5 (35.7)
Burner pressure maximum NG/LPG	kPa	0.70 / 2.10
Burner pressure minimum NG/LPG	kPa	0.19 / 0.55
Efficiency 80/60 Nom./Min.	%	87.30
Efficiency 50/30 Nom./Min.	%	93.20
Adjustable central heating temperature	°C	35 - 85
Expansion vessel factory-set pressure	bar	1
Pressure relief setting	bar (psi)	3 (44)
Expansion vessel capacity	L	10
Head available with 1000 l/h flow rate	kPa (m H <sub>2</sub> O)	30.2 (3.1)
Electrical connection	V/Hz	230 / 50
Installed electric power	W	180



Key:

- G - Gas supply (not supplied as standard)
- R - Return - CH
- F - Flow - CH
- C - Cold fill

Height (mm)	Width (mm)	Depth (mm)
1000	555	255
CONNECTIONS		
CORD INLET	GAS	SYSTEM
C	G	R F
1/2"	3/4"	3/4" 3/4"



Hunt Heating.  
**The smart choice.**  
Experts in Domestic and Commercial Hydronic Heating.

Hunt Heating reserves the right to modify its products at any time without prior notification.