

Richmond Hydronic Towel Rails

Luxury and
Warmth

Manufactured by:

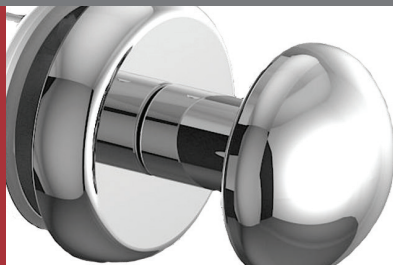


10
YEAR
WARRANTY

The DeLonghi Richmond range of Towel Rails offer a sophisticated, high quality of chrome and white towel rails. With a bold rail design, this stunning collection is ideal for any modern or traditional bathroom, complementing the surroundings and environment

Towel rails available with electric element option.

HANDY PEG



BRACKET



FINISHES

High gloss white and chrome

DESIGN

Straight and curved

Exclusive to:



Showroom 11 Fiveways Boulevard Keysborough VIC 3173

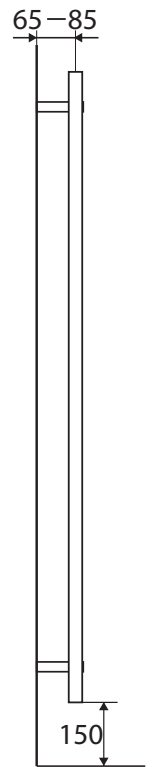
Phone 1300 00 1800 **Fax** (+613) 9798 5133

Email enquiries@huntheat.com.au **Website** www.huntheat.com.au

Richmond Straight / Curved Towel Rails

Tables based on $\Delta T 60$ - mean water temperature in radiator of 80°C and a room temperature of 20°C - radiator outputs to EN442.
 $\Delta T 50$ - mean water temperature in radiator of 70°C and a room temperature of 20°C

Model Straight		Width mm (L)	Height mm (H)	Connection Centres mm (I)	Output kw $\Delta t 60$		Output kw $\Delta t 50$	
White	Chrome				White	Chrome	White	Chrome
RIWS-400x 691	RICS-400x 691	400	691	350	.334	.225	.261	.176
RIWS-400x1186	RICS-400x1186	400	1186	350	.547	.399	.428	.312
RIWS-400x1546	RICS-400x1546	400	1546	350	.766	.536	.599	.419
RIWS-450x 691	RICS-450x 691	450	691	400	.366	.245	.286	.192
RIWS-450x 961	RICS-450x 961	450	961	400	.492	.335	.385	.262
RIWS-450x1186	RICS-450x1186	450	1186	400	.602	.436	.471	.341
RIWS-500x 691	RICS-500x 691	500	691	450	.398	.266	.311	.208
RIWS-500x 961	RICS-500x 961	500	961	450	.536	.358	.419	.280
RIWS-500x1186	RICS-500x1186	500	1186	450	.656	.462	.513	.361
RIWS-500x1546	RICS-500x1546	500	1546	450	.861	.602	.673	.471
RIWS-500x1726	RICS-500x1726	500	1726	450	.970	.645	.758	.504
RIWS-550x 691	RICS-550x 691	550	691	500	.431	.287	.337	.224
RIWS-550x1186	RICS-550x1186	550	1186	500	.711	.509	.556	.398
RIWS-550x1546	RICS-550x1546	550	1546	500	.934	.654	.730	.511
RIWS-550x1726	RICS-550x1726	550	1726	500	1.053	.700	.823	.547
RIWS-600x 691	RICS-600x 691	600	691	550	.463	.307	.362	.240
RIWS-600x 961	RICS-600x 961	600	961	550	.624	.421	.488	.329
RIWS-600x1186	RICS-600x1186	600	1186	550	.765	.551	.598	.431
RIWS-600x1546	RICS-600x1546	600	1546	550	1.006	.700	.786	.547
RIWS-600x1726	RICS-600x1726	600	1726	550	1.135	.756	.887	.591
RIWS-750x1546	RICS-750x1546	750	1546	700	1.223	.847	.956	.662
RIWS-750x1726	RICS-750x1726	750	1726	700	1.383	.924	1.081	.722



Model Curved		Width mm (L)	Height mm (H)	Connection Centres mm (I)	Output kw $\Delta t 60$		Output kw $\Delta t 50$	
White	Chrome				White	Chrome	White	Chrome
RIWC-450x 691	RICC-450x 691	450	691	400	.366	.245	.286	.192
RIWC-450x 961	RICC-450x 961	450	961	400	.492	.335	.385	.262
RIWC-450x1186	RICC-450x1186	450	1186	400	.602	.436	.471	.341
RIWC-500x 691	RICC-500x 691	500	691	450	.398	.266	.311	.208
RIWC-500x 961	RICC-500x 961	500	961	450	.536	.358	.419	.280
RIWC-500x1186	RICC-500x1186	500	1186	450	.656	.462	.513	.361
RIWC-500x1546	RICC-500x1546	500	1546	450	.861	.602	.673	.471
RIWC-500x1726	RICC-500x1726	500	1726	450	.970	.645	.758	.504
RIWC-550x 691	RICC-550x 691	550	691	500	.431	.286	.337	.224
RIWC-550x 961	-	550	961	500	.581	-	.419	-
RIWC-550x1186	RICC-550x1186	550	1186	500	.711	.509	.556	.398
RIWC-550x1546	RICC-550x1546	550	1546	500	.934	.651	.730	.509
RIWC-550x1726	RICC-550x1726	550	1726	500	1.053	.701	.823	.548
RIWC-600x 691	RICC-600x 691	600	691	550	.463	.261	.362	.240
RIWC-600x 961	RICC-600x 961	600	961	550	.624	.421	.488	.329
RIWC-600x1186	RICC-600x1186	600	1186	550	.765	.551	.598	.431
RIWC-600x1546	RICC-600x1546	600	1546	550	1.006	.700	.786	.547
RIWC-600x1726	RICC-600x1726	600	1726	550	1.135	.756	.887	.591
RIWC-750x1546	RICC-750x1546	750	1546	700	1.223	.847	.956	.662
RIWC-750x1726	RICC-750x1726	750	1726	700	1.383	.924	1.081	.722

