



● Daikin Industries, Ltd.'s products are manufactured for export to numerous countries throughout the world. Daikin Industries, Ltd. does not have control over which products are exported to and used in a particular country. Prior to purchase, please therefore confirm with your local authorised importer, distributor and/or retailer whether this product conforms to the applicable standards, and is suitable for use, in the region where the product will be used. This statement does not purport to exclude, restrict or modify the application of any local legislation.

- Ask a qualified installer or contractor to install this product. Do not try to install the product yourself. Improper installation can result in water or refrigerant leakage, electrical shock, fire or explosion.
- Use only those parts and accessories supplied or specified by Daikin. Ask a qualified installer or contractor to install those parts and accessories. Use of unauthorised parts and accessories or improper installation of parts and accessories can result in water or refrigerant leakage, electrical shock, fire or explosion.
- Read the User's Manual carefully before using this product. The User's Manual provides important safety instructions and warnings. Be sure to follow these instructions and warnings.

If you have any enquiries, please contact your local importer, distributor and/or retailer.

#### Cautions on product corrosion

1. Air conditioners should not be installed in areas where corrosive gases, such as acid gas or alkaline gas, are produced.
2. If the outdoor unit is to be installed close to the sea shore, direct exposure to the sea breeze should be avoided. If you need to install the outdoor unit close to the sea shore, contact your local distributor.



JMI-0107



JQA-1452



Daikin Australia  
Pty Limited (ISO 9001)  
QEC 23256 31 May 2006

#### About ISO 9001

ISO 9001 is a plant certification system defined by the International Organization for Standardization (ISO) relating to quality assurance. ISO 9001 certification covers quality assurance aspects related to the "design, development, manufacture, installation, and supplementary service" of products manufactured at the plant.



EC99J2044



Daikin Australia  
Pty Limited (ISO 14001)  
CEM20437 13 November 2006

#### About ISO 14001

ISO 14001 is the standard defined by the International Organization for Standardization (ISO) relating to environmental management systems. Our group has been acknowledged by an internationally accredited compliance organisation as having an appropriate programme of environmental protection procedures and activities to meet the requirements of ISO 14001.

#### Dealer

#### DAIKIN INDUSTRIES, LTD.

Head Office:  
Umeda Center Bldg., 2-4-12, Nakazaki-Nishi,  
Kita-ku, Osaka, 530-8323 Japan

Tokyo Office:  
JR Shinagawa East Bldg., 2-18-1, Konan,  
Minato-ku, Tokyo, 108-0075 Japan

[http://www.daikin.com/global\\_ac/](http://www.daikin.com/global_ac/)

©All rights reserved

● Specifications, designs and other content appearing in this brochure are current as of September 2007 but subject to change without notice.

# DAIKIN

PCSAU0773



NEW  
Full 360°  
airflow!!

# SkyAir

AIR CONDITIONING SYSTEM  
COOLING ONLY [50Hz]  
HEAT PUMP [50Hz]

Super Inverter

INVERTER



**R-410A** Creation of Comfort

Economy and comfort are essential to store and office air conditioning.

### Wide selection with the inverter series

Our varied lineup meets customer needs when it comes to functions and indoor unit types.



### Enhanced Comfort with Daikin Inverter

Comfortable air conditioning is achieved through variable output control made possible by the inverter, which continually maintains the set temperature while detecting load, which varies with time of day and number of room occupants.

### Energy savings with high-efficiency inverter

The outdoor unit is equipped with a reluctance compressor that utilizes the latest technology. It brings out the full energy-saving potential of the inverter, which controls power used in accordance with load variation.

### New, compact outdoor unit

The outdoor unit is easy to install in stores and offices where space is limited.

## Product Line-up Heat Pump Cooling only



Series	25	35	50	60	71	100	125	140			
<b>CEILING MOUNTED CASSETTE TYPE</b> (Round Flow)					FCQ71KVEA RZQ71FV4A		FCQ125KVEA RZQ125KV4A	FCQ100KVEA RZQ100KV4A FCQ140KVEA RZQ160KV4A			
<b>COMPACT MULTI FLOW CEILING MOUNTED CASSETTE TYPE</b>											
Indoor unit	FFQ25B8V1B	FFQ35B8V1B	FFQ50B8V1B	FFQ60B8V1B							
Outdoor unit	RXS25EAVMA RKS25EVMA	RXS35EAVMA RKS35EVMA	RXS50FAVMA RKS50FVMA	RXS60FVMA RKS60FVMA							
<b>CEILING SUSPENDED TYPE</b>											
Indoor unit		FHQ35BVV1B	FHQ50BVV1B	FHQ60BVV1B	FHQ71BVV1B		FHQ100BVV1B	FHQ125BVV1B			
Outdoor unit		RXS35EAVMA RKS35EVMA	RXS50FAVMA RKS50FVMA	RXS60FVMA RKS60FVMA	RZQ71FV4A		RZQ100KV4A	RZQ125KV4A			
<b>WALL MOUNTED TYPE</b>											
Indoor unit							FAQ100BVV1B				
Outdoor unit							RZQ100FV4A				
<b>CEILING MOUNTED BUILT-IN TYPE</b>											
Indoor unit			FBQ50BV1A	FBQ60BV1A	FBQ71BV1A						
Outdoor unit			RXS50FAVMA	RXS60FVMA	RXS71FVMA						
<b>CEILING MOUNTED SLIM DUCT TYPE</b>											
Indoor unit	FDXS25CVMA	FDXS35CVMA	FDXS50CVMA	FDXS60CVMA							
Outdoor unit	RXS25EAVMA	RXS35EAVMA	RXS50FAVMA	RXS60FVMA							
		<b>INVERTER</b>					<b>Super Inverter</b>				
Heat pump	RXS25EAVMA	RXS35EAVMA	RXS50FAVMA	RXS60FVMA		RXS71FVMA	RZQ71FV4A	RZQ100FV4A	RZQ100KV4A	RZQ125KV4A	RZQ160KV4A
Cooling only	RKS25EVMA	RKS35EVMA	RKS50FVMA	RKS60FVMA							
<b>OUTDOOR UNIT</b>											

Page 5

Page 9

Page 11

Page 13

Page 15

Page 16

Page 17

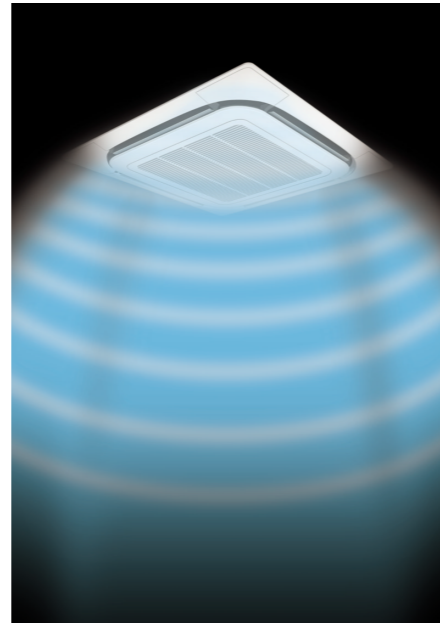
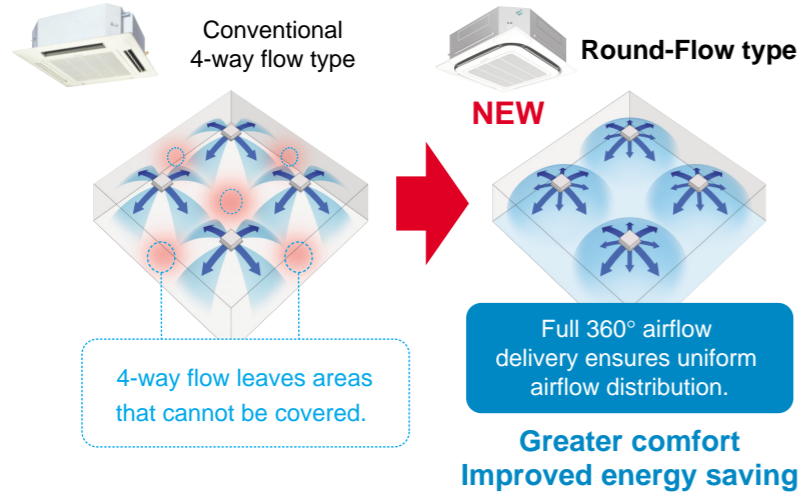
# RoundFlow cassette

NEW

## Comfortable airflow

Full 360° airflow with improved temperature distribution.

ROUND FLOW



# Comfortable

Super Inverter

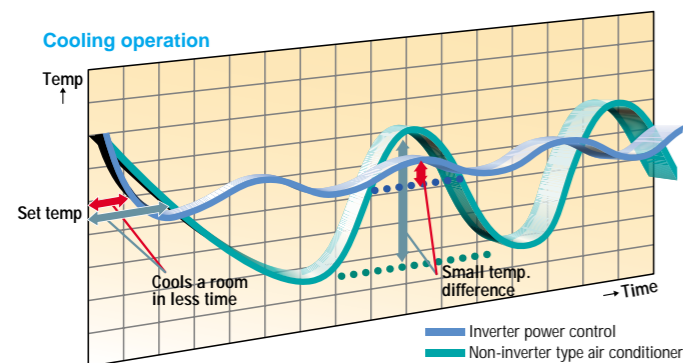
INVERTER

## Enhanced comfort with Inverter

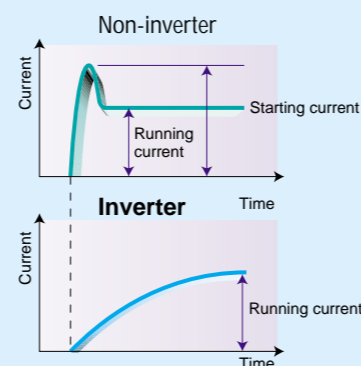
Inverter performs variable control of frequency, which determines air conditioner's power performance.

At startup, full power is used to achieve the set temperature quickly. Then, the capacity is adjusted according to the outdoor temperature changes and subtle indoor load changes to achieve fine capacity control resulting in a more stable room temperature.

Non-inverter type air conditioners must be switched on and off repeatedly, causing large fluctuations of the room temperature.



Soft starter is unnecessary, making electrical installation work much simpler.



At startup, inverter raises frequency smoothly, eliminating the starting current spike.

# Compact

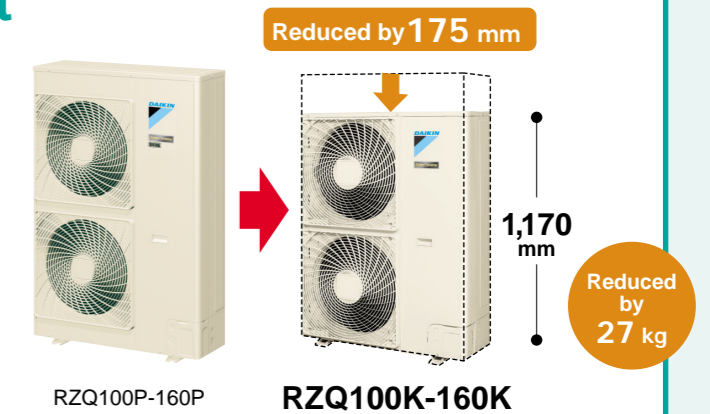
Super Inverter

## Compact and lightweight

Reduced installation work thanks to light, compact outdoor unit.

Comparison of outdoor units

	Conventional (RZQ100P-160P)	NEW (RZQ100K-160K)
100/125/160	Height 1,345 mm	1,170 mm
	Weight 125 kg	98 kg

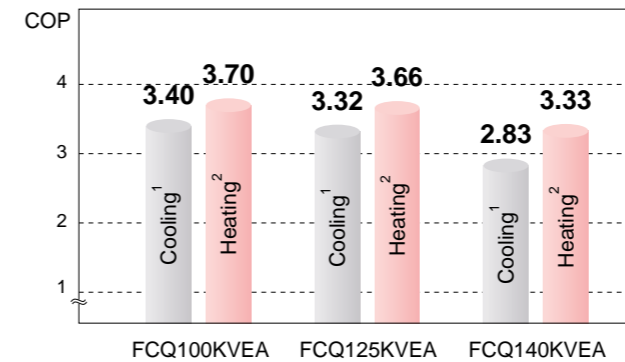


# Energy saving

Super Inverter

## Optimised Efficiency.

Complies with MEPS



**What is COP (Coefficient of Performance)**  
COP is equal to capacity (kW) divided by power consumption (kW), and the larger the COP value, the higher the energy efficiency, enabling cooling and heating with less electricity and increasing the energy saving performance.

Note :  
<sup>1</sup>Rated cooling capacities are based on the following conditions: Indoor temp., 27°CDB, 19.0°CWB; outdoor temp. 35°CDB Equiv. refrigeration piping, 7.5 m (horizontal).  
<sup>2</sup>Rated heating capacities are based on the following conditions: Indoor temp., 20°CDB, outdoor temp., 7°CDB, 6°CWB. Equiv. refrigeration piping, 7.5 m (horizontal).

# Quiet operation

Super Inverter

## Nighttime quiet operation function

Model	Sound level <sup>3</sup> (dB(A))	
	Rated <sup>4</sup>	Night Quiet Mode
RZQ71F	48	47
RZQ100F	50	49
RZQ100K	49	45
RZQ125K	50	45
RZQ160K	50	46

Note : <sup>3</sup>Anechoic chamber conversion value, measured according to JIS parameters and criteria. During operation these values are somewhat higher owing to ambient conditions.  
<sup>4</sup>Value when cooling. Value will differ when heating.



**NEW** Uniform 360° airflow cassette air conditioner is setting tomorrow's standards.



**Heat pump**  
FCQ71K/100K/125K/140K

**ROUND FLOW**

Greater comfort  
Improved energy saving

**Option**  
Accessory required for indoor unit

**Wired LCD remote controller with weekly schedule timer**  
BRC1D61

Note: Remote controller cable not included. Cables must be procured locally.

**Wireless LCD remote controller**  
A signal receiver must be added to the indoor unit.

Heat pump **BRC7F632F**

Signal receiver unit (Installed type)

Wireless remote controller and signal receiver unit are sold as a set.

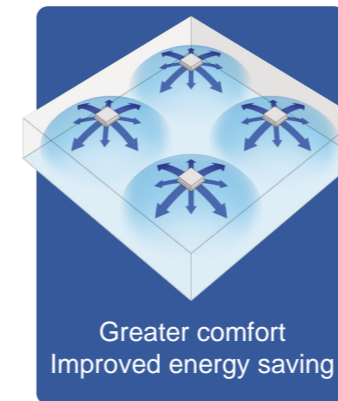
Avoids ununiform temperature and uncomfot caused by drafts.

**Comfort enhanced by new airflow!**

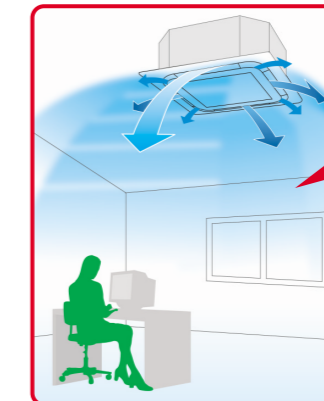
- Full 360° airflow
- Air movement is gentle with Round Flow

With uniform temperature distribution

Enhanced Comfort



Airflow distribution  
Creates uniform comfort throughout the space



Full 360° airflow can maintain comfort even if air discharge speed is lower.

If you raise the set temperature by 1 to 1.5°C in cooling (and lower in heating), and velocity is decreased by 25%, You still obtain the same feeling temperature and comfort.

**Easily adapts to the installation space.**

- Because air flows out of corner outlets, comfort is more widely spread than before.

**Typical flow patterns** There are a total of 23 flow patterns.

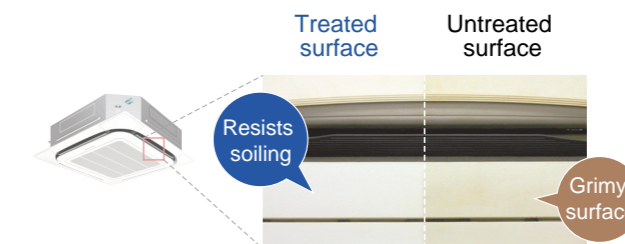
- All-round flow** (E.g., installed in middle of ceiling) 4-way flow also possible.
- 3-way flow** (E.g., installed near a wall)
- L-shaped 2-way flow** (E.g., installed in a corner)
- Opposite 2-way flow** (E.g., installed in a long room)

Note: Whatever the discharge direction, the same type of panel is used. If installing for other than all-round flow, an air discharge outlet sealing member (option) must be used to close each unused outlet.

Grime prevention and bactericidal coating: Cleanly performance improved.

**External panels are treated with a new coating that repels dirt.**

- To prevent dirt sticking to the external panels, they have been coated with a new surface treatment.



Condition after exposure to the smoke of 600 cigarettes in 1 m<sup>3</sup> enclosed space.

- New bactericidal treatment for drain pan  
Anti bacterial treatment, that includes silver ions is used which may assist in preventing the growth of microorganisms that cause smells and clogging.
- Non-flocking horizontal louvres  
Dew does not easily form on and dirt does not cling to non-flocking louvres. Less cleaning is needed because minimal dirt is attracted.
- Filter has anti-mould and bactericidal treatment  
Prevents mould and microorganisms growing out of the dust and moisture that adheres to the filters.

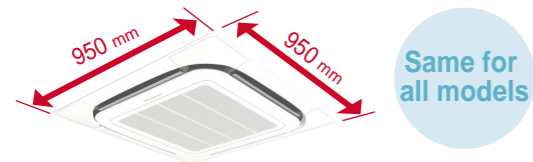
**Features**

Feature	Comfort										Mould prevention	Work & Servicing					Control features					Option		Others							
	Auto swing	Swing pattern selection	Draft prevention function	Switchable fan speed	Programme "Dry"	High ceiling application	Two selectable thermo-sensors	Hot start	Year-round cooling applicable	Timer selector		Mould-resistant treatment for filter	Drain water lift-up mechanism	Pre-charged for up to 30 m	Long-life filter	Filter sign	Ceiling soiling prevention	Low gas pressure detection	Emergency operation	Self-diagnosis function	Auto-restart	Auto-cooling/heating change-over	Control by 2 remote controllers		Control by 1 remote controller	External command control	Central remote control	Interlock control	Ultra long-life filter	High-efficiency filter	Fresh air intake kit
Heat pump	●	●	●	●	●	●	●	●	●	●	●	●	●	●	●	●	●	●	●	●	●	●	●	●	●	●	●	●	●	●	●

\*1Applicable when wired remote controller is used

Unified square panels Compact body and quiet operation

- Panels are the same size as the FCQ71-140K. Maintain a neat appearance where multiple units are installed.



Indoor unit	High	Low
71K	35	28
100K	43	32
125K	44	34
140K	44	36

Note: Anechoic chamber conversion value, measured according to JIS parameters and criteria. During operation these values are somewhat higher owing to ambient conditions.

Optimal comfort and convenience assured by air discharge modes

Note: Air direction is set to the standard position when the unit is shipped from the factory. The position can be changed from the remote controller.

Blow direction	Standard setting	Setting to prevent soiling of ceiling*
Desired situation	Standard position to prevent draft.	Recommended for shops with light colored ceilings that must be kept spotless.
Auto-swing	Auto-swing between 15° and 60°	Auto-swing between 25° and 60°
Blow direction can be set to 5 levels	Settable to 5 different levels between 15° and 60°	Settable to 5 different levels between 25° and 60°
Draft prevention (In heating mode)	At heating startup and thermo OFF, air discharge is automatically set to a near horizontal 25° or 30° to prevent direct exposure to cool air drafts.	
Auto blow direction control	The last discharge direction is saved in memory and automatically set the next time the unit is turned ON.	

\*Closing of the corner discharge outlets is recommended.

Suitable for high ceilings

Even in spaces with high ceilings, a comfortable airflow is carried down to the floor level.

Criteria for ceiling height and number of air discharge outlets

Ceiling height	Standard	Number of blow outlets used							
		71K				100K-140K			
		All round blow	4-way blow	3-way blow	2-way blow	All round blow	4-way blow	3-way blow	2-way blow
High ceiling ①	2.7 m	3.1 m	3.0 m	3.5 m	3.2 m	3.4 m	3.6 m	4.2 m	
High ceiling ②	3.0 m	3.4 m	3.3 m	3.8 m	3.6 m	3.9 m	4.0 m	4.2 m	
	3.5 m	4.0 m	3.5 m	—	4.2 m	4.5 m	4.2 m	—	

Note: Factory settings are for standard ceiling height and all-round blow. High ceiling settings (1) and (2) are set with the remote controller.

Two selectable temperature-sensors

Both indoor unit and wired remote controller (option) contain temperature-sensors. Temperature sensing can be set at the unit or, to further improve comfort level, closer to the target area at the wired remote control. This feature must be set during commissioning by the technicians.

\*Temperature-sensor on indoor unit must be used when the air conditioner is controlled from another room. \*\*Wireless remote controller does not have a temperature-sensor.

Hot start (after defrost)

Uncomfortable cold air draft is avoided when heating operation starts or when switching to heat after defrosting.

Switchable fan speed: High/Low

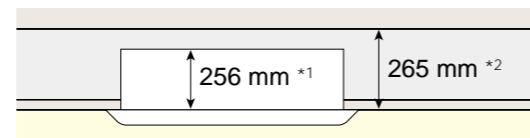
High setting provides maximum reach while low setting minimizes drafts.

Timer selector

Operation starts when the preset time of the ON timer elapses and stops when the preset time of the OFF timer elapses.

Quick and easy to install

- Just 256 mm high. Can be installed in tight ceiling spaces (71K)



\*1 298 mm high with 100K-140K  
\*2 303 mm high with 100K-140K

Easy height adjustment

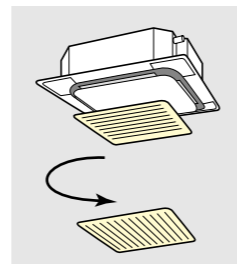
Each corner of the unit has an Adjuster Pocket that lets you easily adjust the unit's suspended height.

Note: If the wireless remote control option is installed, a light receptor unit is housed in one of the adjuster pockets.

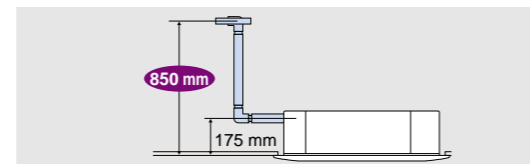
All models suspended without lift

Installed in any direction

Since the orientation of the intake grill can be adjusted after installing, the direction of the intake grill lines can be unified when multiple units are installed.

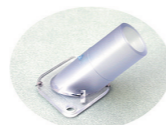


Drain pump is equipped as standard accessory with 850 mm lift.



Transparent drain socket

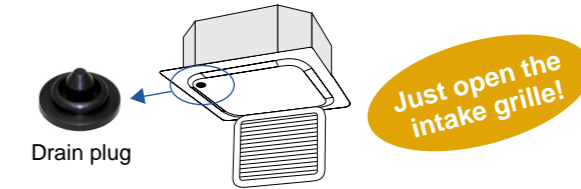
Because the drain socket is transparent, after the drain piping has been installed, it is easy to check if the drain come out through the socket.



Easier connection with the centralised control system

Easier to maintain

- The condition of the drain pan and drain water can be checked by removing the drain plug and intake grille.

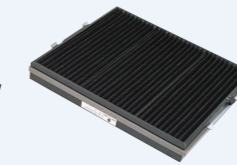


- With ultra-long-life filters (option), maintenance is not required in normal shops or offices for up to four years.

Options required for specific operating environments

Ultra-long-life filter

Even in smoky environments where the air conditioning is on most of the time, the ultra long-life filter only has to be changed once a year.



**Smoky atmosphere: annual filter change**  
\*For dust concentration of 0.3 mg/m<sup>3</sup> (Requires separately sold Air Cleaner.)  
1 year (Approx. 5,000 hr) ≈ 15 hr/day x 28 day/month x 12 month/year

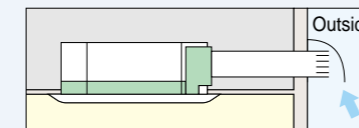
**Ordinary store or office: filter change every 4 years**  
\*For dust concentration of 0.15 mg/m<sup>3</sup>  
4 years (Approx. 10,000 hr) ≈ 8 hr/day x 25 day/month x 4 years

High-efficiency filter

Available in two types: 65% and 90% colorimetry.

Fresh air intake kit

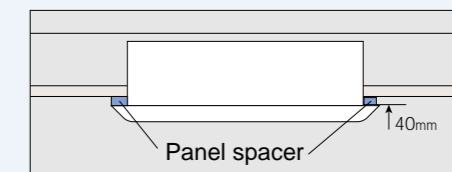
Using this kit, a duct can be fitted to increase the intake of outdoor air.



Note: \*Connecting ducts, insect nets, fire dampers, air filters, and other parts should, as required, be procured locally.  
\*\*Outside Air fan interlocked with air conditioning unit is necessary. Optional PCB(KRP1C63) is required for interlocking.  
\*\*\*It is recommended that the volume of outdoor air introduced through the kit is limited to 10% of the maximum airflow rate of the indoor unit. Introducing higher quantities will increase the operating noise and may also influence temperature sending.

Panel spacer

Use when only minimal space is available between drop ceilings and ceiling slabs.



Note: Some ceiling constructions may hinder installation. Contact your Daikin Dealer before installing your unit.

Sealing member of air discharge outlet

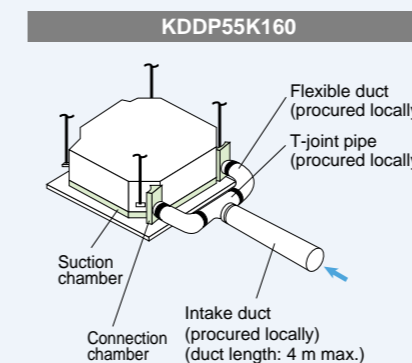
Sealing members block air discharge openings not used in 2-way or 3-way blow.

Branch duct (direct-connection round duct)

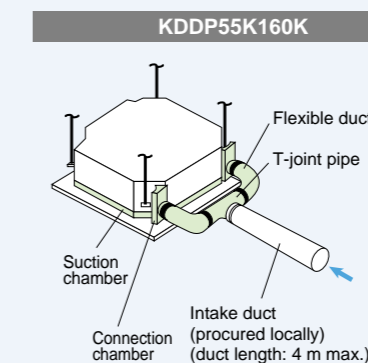
A round duct can be attached without the need for a chamber. A flanged port for direct connection of a round duct is provided. An existing branch duct chamber can also be fitted (square slit hole).

The units can be installed in the following different ways.

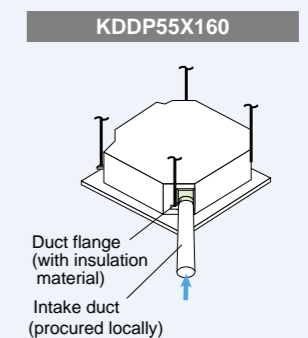
Chamber type (without T-joint pipe and fan)



Chamber type (with T-joint pipe and without fan)



Direct installation type



Note: Use of options will increase operating noise.

# Quiet, decor-blending form and easy installation in new or old buildings.



Heat pump / Cooling only  
FFQ25B8 / 35B8 / 50B8 / 60B8



**Option**

Accessory required for indoor unit

Wired LCD remote controller with weekly schedule timer



**BRC1D61**

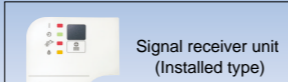
Note: Remote controller cable not included. Cables must be procured locally.

Wireless LCD remote controller

A signal receiver must be added to the indoor unit.



Heat pump **BRC7E530W7**  
Cooling only **BRC7E531W7**

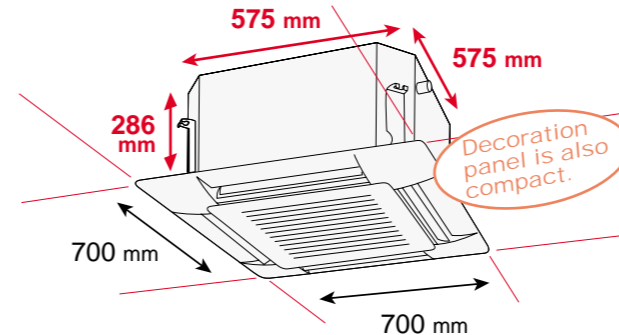


Signal receiver unit (Installed type)

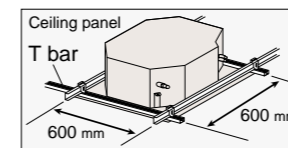
Wireless remote controller and signal receiver unit are sold as a set.

## Compact

- Sized to fit inside 600mm wide ceiling grids



- Fits without the need to cut T-bar grid



The switch box is built in to the unit, so maintenance is possible by simply removing the grill. An inspection opening is not required even for modules other than 600 x 600.



## Quiet

- Quiet, small-diameter fan

Quiet operation has been achieved by a compact body and newly developed spiral hub cover that reduces the airflow resistance inside the indoor unit.



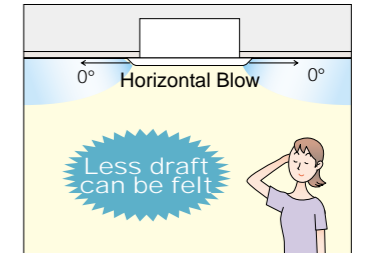
Spiral hub cover →

Indoor unit	dB(A)	
	High	Low
25B8	29.5	24.5
35B8	32	25
50B8	36	27
60B8	41	32

Note: Anechoic chamber conversion value, measured according to JIS parameters and criteria. During operation these values are somewhat higher owing to ambient conditions.

## Comfortable

- Designed for low draft performance"



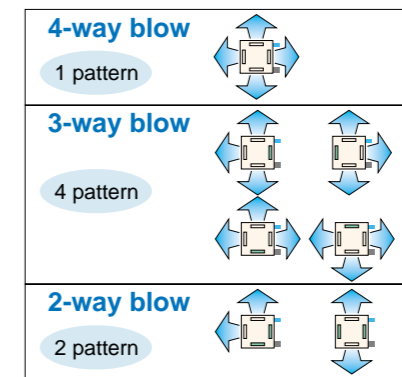
- Consistent comfort throughout

- Auto-swing operation distributes conditioned air more evenly.
- Air blow angle can be adjusted in accordance with room conditions.

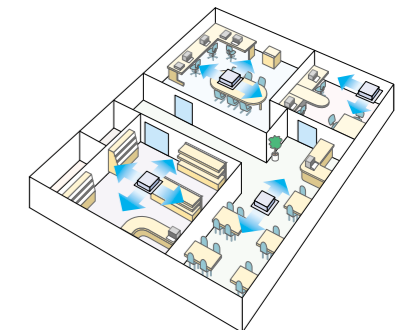
	AUTO-SWING	5 direction
Standard setting	Auto-swing between 0° and 60°	Settable to 5 different levels between 0° and 60°
Draft prevention setting (Set on site)	Auto-swing between 0° and 35°	Settable to 5 different levels between 0° and 35°
Setting to prevent soiling of ceiling (Set on site)	Auto-swing between 25° and 60°	Settable to 5 different levels between 25° and 60°

Note: This angle above is provided as a guide. It may differ depending on the installation site.

- Multi-Flow System



- Blow direction can be selected according to installation.



■ denotes piping direction. ■ Drain piping  
■ denotes sealing member for air discharge outlet (option).

Note: For 3-way or 2-way blow installation, the sealing member for air discharge outlet (option) must be used to close off the unused outlet(s).

Note: Operation noise increases when using 2-way or 3-way blow.

- Two selectable temperature-sensors

Both indoor unit and wired remote controller (option) contain temperature-sensors. Temperature sensing can be set at the unit or, to further improve comfort level, closer to the target area at the wired remote control. This feature must be set during commissioning by the technicians.

\*Temperature-sensor on indoor unit must be used when the air conditioner is controlled from another room.  
\*\*Wireless remote controller does not have a temperature-sensor.

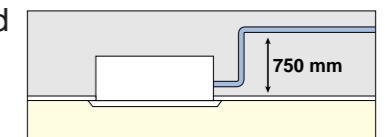
- Hot start (after defrost)

Uncomfortable cold air draft is avoided when heating operation starts or when switching to heat after defrosting.

- Switchable fan speed: High/Low

High setting provides maximum reach while low setting minimizes drafts.

- Drain pump is equipped as standard accessory with 750 mm lift.



## Features

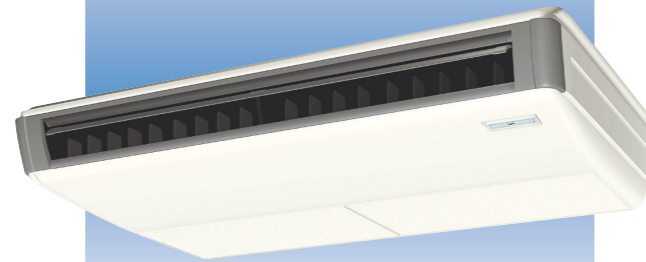
Feature	Comfort										Mould prevention	Work & Servicing				Control features					Option	Others			
	Auto swing	Swing pattern selection	Draft prevention function	Switchable fan speed	Programme "Dry"	Two selectable thermo-sensors	Hot start	Year-round cooling applicable	Timer selector	Mould-resistant treatment for filter		Drain water lift-up mechanism	Pre-charged for up to 10 m	Long-life filter	Filter sign	Emergency operation	Self-diagnosis function	Auto-restart	Auto-cooling/heating change-over	Control by 2 remote controllers			Control by 1 remote controller	External command control	Central remote control
Cooling only	●	●	●	●	●	*1	—	●	●	●	●	●	●	●	●	●	—	●	●	●	●	●	●	●	●
Heat pump	●	●	●	●	●	*1	●	●	●	●	●	●	●	●	●	●	●	●	●	●	●	●	●	●	●

\*1 Applicable when wired remote controller is used

# Upgrade to a quiet and compact system.



Heat pump  
FHQ35BV/50BV/60BV/71BV  
100BV **NEW** / 125BV **NEW**  
Cooling only  
FHQ35BV/50BV/60BV



**Option**

Accessory required for indoor unit

Wired LCD remote controller with weekly schedule timer



**BRC1D61**

Note: Remote controller cable not included. Cables must be procured locally.

Wireless LCD remote controller

A signal receiver must be added to the indoor unit.



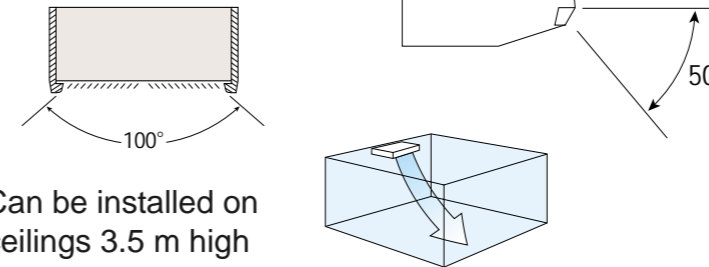
Heat pump **BRC7EA63W**  
Cooling only **BRC7EA66**



Signal receiver unit (Installed type)  
Wireless remote controller and signal receiver unit are sold as a set.

## Diffuses comfortable air throughout the room

- Auto-swing (up&down) brings comfort to the room.
- Wide air discharge openings produce a spreading 100° airflow
- Air is blown up to 50° in the downward direction.



- Can be installed on ceilings 3.5 m high
- Two selectable temperature-sensors

Both indoor unit and wired remote controller (option) contain temperature-sensors. Temperature sensing can be set at the unit or, to further improve comfort level, closer to the target area at the wired remote control. This feature must be set during commissioning by the technicians.

\*Temperature-sensor on indoor unit must be used when the air conditioner is controlled from another room.  
\*\*Wireless remote controller does not have a temperature-sensor.

- Switchable fan speed: High/Middle/Low
- Programme "Dry"

Dehumidification is micro processor controlled to prevent abrupt and uncomfortable changes in air temperature.

## Installation flexibility for greater freedom of design

- Uniform height and depth. Compact design for small-capacity models to meet tighter dimensional constraints.

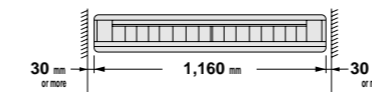
Indoor unit	(mm)			
	35BV/50BV	60BV/71BV	100BV	125BV
Height	195			
Width	960	1,160	1,400	1,590
Depth	680			

Weight of all models reduced (down 10% compared with previous models). Transfer and installation work is less arduous.

- Less need for edge space, more freedom of installation
- Drain pump kit (option) can be easily incorporated

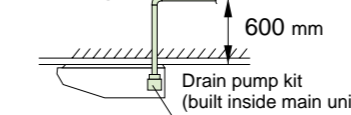
The unit fits more snugly into tight spaces.

For 71BV indoor unit



\*Water used in the test-run can now be drained from the air discharge opening rather than from the side as was formerly the case.

Drain pipe connection can be done inside the unit. Refrigerant and drain pipe outlets are at the same opening.



- All wiring and internal servicing done from below the unit
- Pipes more easily rigged, too
- Low gas pressure detection

Plastic panels are used to conceal piping holes. Holes can be easily punched out without requiring special tools.

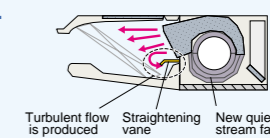
## Quiet operation

- Sound operation has been reduced on the exposed ceiling suspended type unit.

Indoor unit	dB(A)	
	High	Low
35BV	37	32
50BV	38	33
60BV	39	33
71BV	39	35
100BV	42	37
125BV	44	39

Note: Anechoic chamber conversion value, measured according to JIS parameters and criteria. During operation these values are somewhat higher owing to ambient conditions.

Uses quiet stream fan and other quiet technologies.



## Easier to maintain

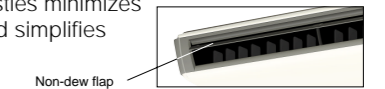
- Long-life filter lasts about half year \* maintenance not required

\* For dust concentration of 0.15 mg/m<sup>3</sup>

Two time settings (2500 hrs and 1250 hrs) are available to match the installation environment. Maintenance time warning is displayed on the remote controller (filter sign).

- Non-dew flap without bristles

Absence of bristles minimizes clinging dirt and simplifies cleaning.



- Easy-clean, flat surfaces

It is easy to wipe dirt off the flat side and lower surfaces of the unit.

- For all maintenance tasks, access is from below. Work is easier.

## Improved-oil resistant grille

- Oil-resistant plastic is used for the air discharge grille. This improves durability in restaurants and other similar environments.

Note: Intended for use in salons, dining rooms, and ordinary sales floors, this specification is not suitable for kitchens or other harsh environments.

### Features

Feature	Comfort										Mould prevention		Work & Servicing				Control features					Others				
	Auto swing	Draft prevention function	Switchable fan speed	Programme "Dry"	High ceiling application *1	Two selectable thermo-sensors	Hot start	Year-round cooling applicable	Timer selector	Mould-resistant treatment for filter	Mould-proofing drain pan	Drain water lift-up mechanism	Pre-charged for up to 30 m	Long-life filter	Filter sign	Low gas pressure detection	Emergency operation	Self-diagnosis function	Auto-restart	Auto-cooling/heating change-over	Control by 2 remote controllers	Control by 1 remote controller	External command control	Central remote control	Interlock control	PE fin
Cooling only	●	●	●	●	●	2	—	●	●	●	●	3	●	●	—	●	●	●	—	●	●	●	●	●	●	●
Heat pump	●	●	●	●	●	2	●	●	●	●	●	3	●	●	3	●	●	●	●	●	●	●	●	●	●	●

\*1 Installable on max. 3.5 m high ceiling

\*2 Applicable when wired remote controller is used

\*3 Applicable to RZQ71FV4A RZQ100, 125KV4A outdoor units

# Quiet operation Easy installation



Heat pump  
FAQ100BV



**Option**

**Accessory required for indoor unit**

**Wired LCD remote controller with weekly schedule timer**



**BRC1D61**

Note: Remote controller cable not included. Cables must be procured locally.

**Wireless LCD remote controller**

A signal receiver must be added to the indoor unit.



**BRC7C610W**

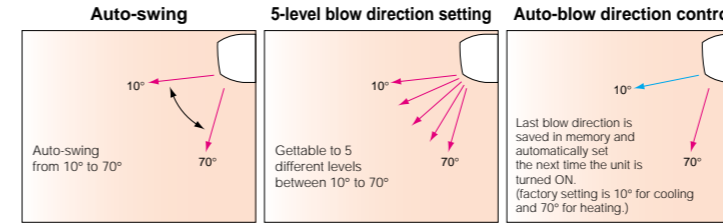


**Signal receiver unit (Installed type)**

Wireless remote controller and signal receiver unit are sold as a set.

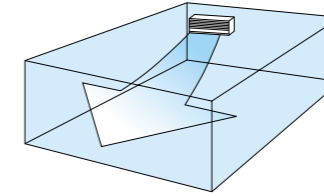
## Comfortable

- Improved air discharge modes ensure comfortable air distribution across the entire room



- Comfort even on the far side of the room

To carry air to the far side of long rooms, extra-high air blow adds 10% more fan speed the "high" setting. Air discharge strength is selected from the remote controller.



- Two selectable temperature-sensors

Both indoor unit and wired remote controller (option) contain temperature-sensors. Temperature sensing can be set at the unit or, to further improve comfort level, closer to the target area at the wired remote control. This feature must be set during commissioning by the technicians.

\*Temperature-sensor on indoor unit must be used when the air conditioner is controlled from another room.  
\*\*Wireless remote controller does not have a temperature-sensor.

- Switchable fan speed: High/Low

- Programme "Dry"

Dehumidification is micro processor controlled to prevent abrupt and uncomfortable changes in air temperature.

## Easier to install and service

- Maintenance possible from the front of the unit

All maintenance tasks can be carried out via front access. During service work, attachment and detachment of parts is easier.

- Low gas pressure detection

Insufficient gas charging is normally hard to detect. During post-installation trials and regular inspection procedures, the refrigerant level is monitored by computer to ensure proper gas pressure.



**Features**

Feature	Comfort										Mould prevention		Work & Servicing				Control features					Others		
	Auto swing	Draft prevention function	Switchable fan speed	Programme "Dry"	High fan speed mode	Two selectable thermo-sensors	Hot start	Year-round cooling applicable	Timer selector	Mould-resistant treatment for filter	Mould-proofing drain pan	Pre charged for up to 30 m	Filter sign	Low gas pressure detection	Emergency operation	Self-diagnosis function	Auto-restart	Auto-cooling/heating change-over	Control by 2 remote controllers	Control by 1 remote controller	External command control	Central remote control	Interlock control	PE fit
Heat pump	●	●	●	●	●	*1	●	●	●	●	●	●	●	●	●	●	●	●	●	●	●	●	●	●

\*1Applicable when wired remote controller is used



# Clever and compact mini ducted unit provides comfort and flexibility.



**Option**

**Accessory required for indoor unit**

**Wired LCD remote controller with weekly schedule timer**

**BRC1D61**

Note: Remote controller cable not included. Cables must be procured locally.

---

**Wireless LCD remote controller**

A signal receiver must be added to the indoor unit.

Heat pump **BRC4C62**

Signal receiver unit (Separate type)

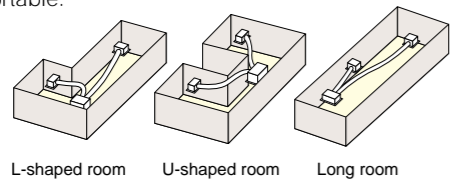
Wireless remote controller and signal receiver unit are sold as a set.

## Compact

- Compact design of built-in type helps blend with interior decor.
- Height reduced to allow installation in confined spaces.

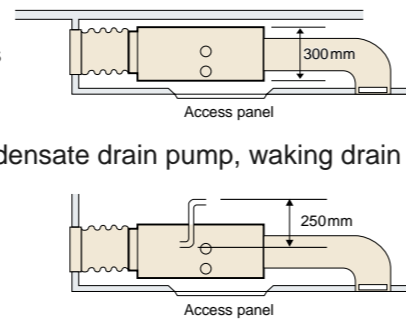
## Comfortable

- Flexibly adapts to shop interiors
- To cope with the challenges of L-shaped or U-shaped spaces, it is possible to install the air discharge unit away from the main unit. At the same time, different types of architectural space can be kept comfortable.



## Work & Servicing

- The height of the unit is a mere 300 mm. It can be installed in a narrow ceiling space. (when access panel is used.)
- Provided with condensate drain pump, making drain piping easier in awkward spaces.



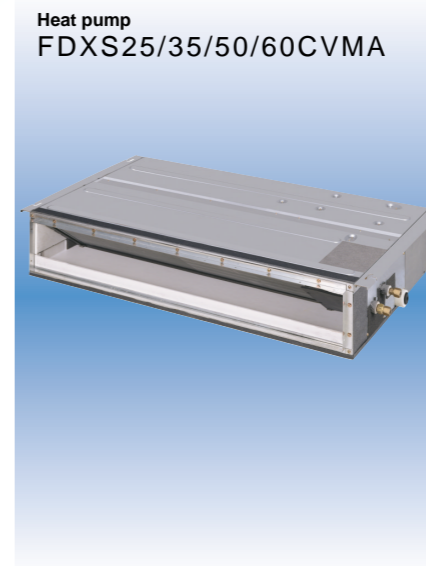
## Quiet operation

Indoor unit	dB(A)	
	High	Low
50B	33	29
60B	34	30
71B	34	30

### Features

Feature	Comfort				Work & Servicing			Control features					Others		
	Switchable fan speed	Programme "Dry"	Hot start	Year-round cooling applicable	Timer selector	Pre-charged for up to 10 m	Filter sign	Self-diagnosis function	Auto-restart	Auto-cooling/heating change-over	Control by 2 remote controllers	Control by 1 remote controller		External command control	Central remote control
Model	●	●	●	●	●	●	●	●	●	●	●	●	●	●	●
Heat pump	●	●	●	●	●	●	●	●	●	●	●	●	●	●	●

# Suitable for tight ceiling spaces.



Note: Refer to Engineering data for airflow and External static pressure characteristics.

## Smooth Finish

- The only visible sign of these unobtrusive units is their discharge grilles. They fit completely inside the ceiling to maintain the original decor of a room. Each unit comes with its own wireless remote controller.

## Slim Profile

- The new series adds a 2.5 kW model. All units share the same low height of just 200 mm. This means it is now possible to install a unit inside a shallow ceiling cavity with a height of just 240 mm.

## Quiet Operation

- Indoor Unit Quiet Operation provides a low sound level of 31 dB and Outdoor Unit Quiet Operation provides a low sound level of 47\* dB for new FDXS25C.

\* During cooling operation

### Features

Feature	Comfort			Work & Servicing		Control features		Others
	Switchable fan speed	Programme "Dry"	Hot start	Pre-charged for up to 10 m	Self-diagnosis function	Auto-restart	Automatic cool/heating change-over	
Model	●	●	●	●	●	●	●	●
Heat pump	●	●	●	●	●	●	●	●

# Super Inverter

## The final word in inverter technology



RZQ71FV4A  
RZQ100FV4A

NEW RZQ100KV4A  
NEW RZQ125KV4A  
NEW RZQ160KV4A

### Easy installation and maintenance

#### Pre charged for up to 30 metres

If refrigerant piping length does not exceed 30 m, there is no need for on-site gas charging.

#### 75 m piping length

(Applicable to RZQ100K-160K outdoor units)

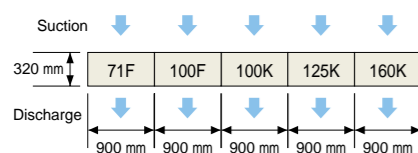
#### Allowed refrigerant piping length and height difference

	Pre charged <sup>1</sup>	Max. length	Max. level difference
71F	30 m	50 m (Equivalent length 70m)	30 m
100F	30 m	50 m (Equivalent length 70m)	30 m
100K	30 m	75 m (Equivalent length 90m)	30 m
125K	30 m	75 m (Equivalent length 90m)	30 m
160K	30 m	75 m (Equivalent length 90m)	30 m

Note: <sup>1</sup>Additional refrigerant charging is required if the refrigerant pipe is longer than the length.

#### Easy centralised installation with the module oriented design

Depth of 71F, 100F, 100K-160K are standardised as 320 mm. Horizontal continuous mounting is available.



### Space saving

#### Compact design with reduced height

Reduced installation work thanks to light, compact outdoor unit.

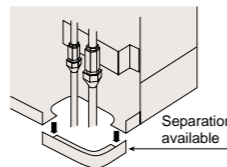
(Applicable to RZQ100K-160K outdoor units)

#### Designed for lightness, carry in is easy

Succeeds in trimming 27 kg off weight of previous equipment

#### 4-direction piping affords more freedom of layout

The outer panel for the piping connection part of the front, right side and backside can be removed and is easier for post-installation piping work.



#### Facilitates pump down (Refrigerant recovery function)

A pump-down switch is provided to make it easier to collect refrigerant if the unit is to be moved or layout modified.

#### Low gas level detection function

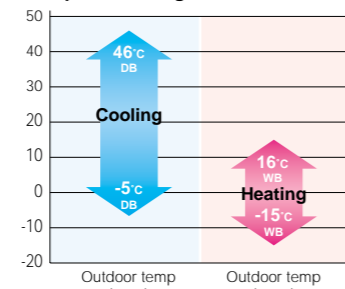
Effective gas monitoring reduces the labor required for operation, maintenance, and repairs.

### Operation range

#### Suited for year-round cooling applications

Cooling is efficient even in winter when indoor temperatures are higher than those outside, such as in underground public spaces or offices with many computers.

#### Wide operation range



### Complies with MEPS

Energy regulations are met due to increased operation efficiency.

### Safety

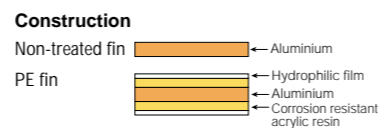
#### Reinforcing wire fittings (option) are available

Fittings can be mounted on the four locations, right/ left on front and back side of the outdoor unit.

### Durability

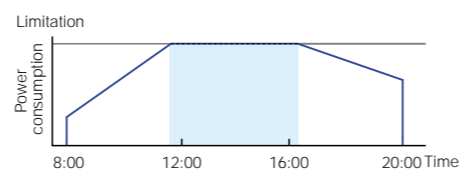
As the bottom frame is subject to corrosion, corrosion-proof galvarium steel plate is adopted to enhance the durability.

#### Heat exchange fins provided with anti-corrosion treatment



### Demand Control Function

The maximum capacity is maintained within a set level of power consumption, which makes it possible to keep comfort and effective demand control.



\* Required for KRP58M51 (Option)

## Technology

### A collection of cutting-edge technologies achieves efficient and quiet operation.

#### The high efficiency compressor to achieve a high COP

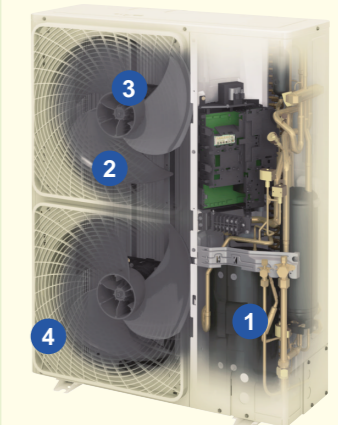
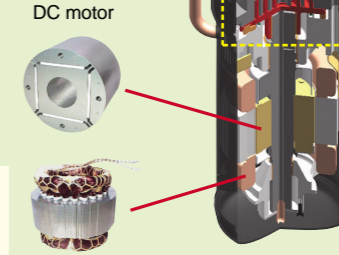
##### 1 Reluctance DC Scroll Compressor

Overheating losses are reduced by pressurising the area around the motor, energy saving performance in conjunction with other features.

#### High thrust mechanism

By introducing high pressure oil, the reactive force from the fixed scroll is added to the internal force, thereby reducing thrust losses. This results in improved efficiency and suppressed sound levels.

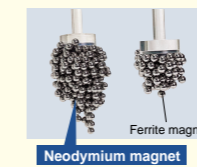
#### Reluctance DC motor



RZQ100KV4A  
RZQ125KV4A  
RZQ160KV4A

#### >> Powerful magnets

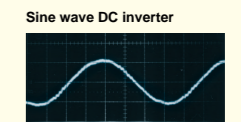
Use of neodymium magnets in the motor enables efficient generation of high torque, reducing the size of the compressor.



Neodymium magnets are much more powerful than the commonly used ferrite magnets.

#### >> Smooth sine wave DC inverter

Use of an optimised sine wave smoothes motor rotation, further improving operating efficiency.

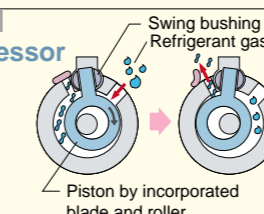


#### >> Stronger materials

The strength of the casing has been increased by boosting the internal dome pressure.

#### >> Swing compressor

Energy savings is realised, eliminating the friction and the leakage of refrigerant gas.

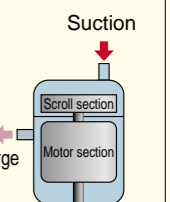


#### >> Optimal refrigerant configuration

Changes to the shape of the spiral and volume ratio result in optimal refrigerant layout.

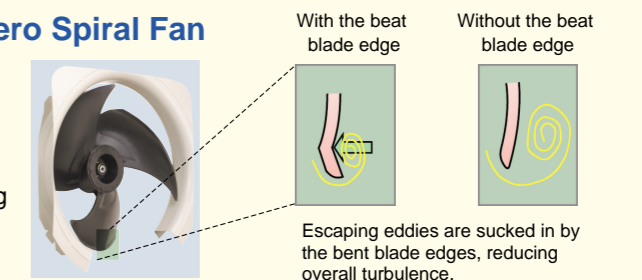
#### >> The structural scroll

Sucked gas is compressed in the scrolling part before the heated motor, so that the machine compresses the non-expanded gas, resulting in high efficiency compression.



##### 2 Smooth Air Inlet Bell Mouth and Aero Spiral Fan

These two features work to significantly reduce noise. Guides are added to the bell mouth intake to reduce turbulence in the airflow generated by fan suction. The Aero Spiral Fan features fan blades with the bent blade edges, further reducing turbulence.



Escaping eddies are sucked in by the bent blade edges, reducing overall turbulence.

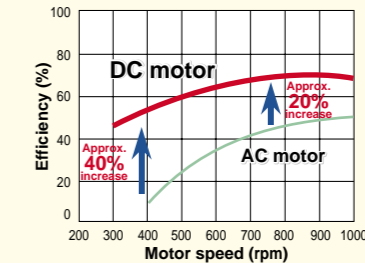
##### 3 DC fan motor

Efficiency improved in all areas compared to conventional AC motors, especially at low speeds.

#### DC fan motor structure



#### DC motor efficiency (comparison with a conventional AC motor)



Note: Data are based on studies conducted under controlled conditions at a Daikin laboratory.

##### 4 Super Aero Grille

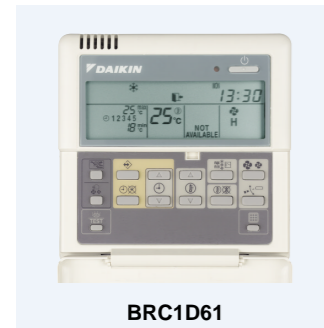
Refined ventilation mechanism enables further reduction in required fan power.

# Easy-to-read LCD remote controller allows various system control configurations and can control multiple indoor units.

Remote controller options are shown on the page introducing each indoor unit model.

## Wired LCD remote controller with weekly schedule timer

Remote control is equipped with weekly timer function.

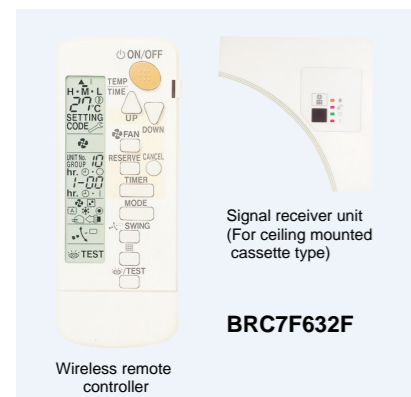


BRC1D61

- 24-hour clock function (1-hour backup for power failures)
- Programming function for each day of week.
- Scheduling possible of start/stop and temperature limit (5 settings/day)
- Programming can be enabled or disabled.
- Copy function for programmed schedules.

## LCD wireless remote controller

Light receptor mounted type



BRC7F632F

- The wireless remote controller is supplied in a set with a signal receiver.
- Shape of signal receiver unit differs according to the indoor unit.

Note: The signal receiver unit shown in the photograph is for mounting inside the decoration panel of the ceiling mounted cassette type.

## Indoor units applicable for the remote controller

Signal receiver unit is contained inside decoration panel or indoor unit

	Heat pump	Cooling only
CEILING MOUNTED CASSETTE TYPE	BRC7F632F	—
COMPACT MULTI FLOW TYPE	BRC7E530W7	BRC7E531W
CEILING SUSPENDED TYPE	BRC7EA63W	BRC7EA66
WALL MOUNTED TYPE	BRC7C610W	—
CEILING MOUNTED BUILT-IN TYPE	BRC4C62	—
CEILING MOUNTED SLIM DUCT TYPE	Standard accessory	—

## LCD panel shows operating status in letters, numbers, and motion.

<b>Airflow / swing display</b>	Displays auto-swing operating status and setting position of air discharge angle.
<b>Preset temperature / operation mode display</b>	Displays preset room temperature and operating status (fan, dry, cool).
<b>Programming time display</b>	Operation start and stop time can be set for individual timers up to 72 hours. The liquid crystal display also shows when it is time to clean the filter, when changeover is under centralised control, and ventilation/cleaning.
<b>Self-diagnosis function</b>	Monitors operating status within the system covering 40 items, and displays a message to indicate as soon as a malfunction occurs.

## Wired remote controller has built-in thermo-sensor

(Applies to wired remote controllers)

- Enables temperature detection closer to target area for improved comfort. (When using remote control from another room, thermo-sensor in indoor unit's air inlet must be selected.)

## Non-polar, double-core connection specifications simplify wiring

- Non-polar, double-core remote controller wire prevents wiring mistakes. Signal receiver unit (or decoration panel) of wireless type is also easy to connect.

## Facilitates maintenance and repair

- All initial settings can be set from the remote controller. After interior construction is complete, ceiling mounted cassette type can be remotely set without having to use stepladder access for manual setting.  
Setting contents: High ceiling use, air direction, filter type, address for centralised control (group control address is set automatically).
- Remote controller is equipped with model name and failure display functions. This facilitates service in the unlikely event of a malfunction.

## SkyAir shares common control with HRV (heat reclaim ventilation) and the other Daikin air-conditioning units, thus simplifying interlocking operations.

- Easily adaptable to large-scale, high-function, centralised remote control systems. Installing and connecting control wiring between SkyAir and other Daikin air-conditioning equipment is easy.

- Optional adaptor for external commands or remote control of external equipment has been standardised to one type.

## Simple system provides a diverse assortment of control modes.

	Control pattern	Wired remote controller	Wireless remote controller
<b>Control by 1 remote controller</b>	(Basic system)	 ● Non-polar, double-core (max. wiring length 500 m)	 ● Signal receiver unit installed on indoor unit
<b>Control by 2 remote controllers</b>	For control from 2 locations such as in room and control room, exits, etc.	 ● Connects 2 wired remote controllers	 ● Control by 1 wireless remote controller and 1 wired remote controller (See note 1) ● Signal receiver unit installed on indoor unit
<b>Group control</b>	For simultaneous control of up to 16 indoor units.	 ● Automatic address setting function	 ● Automatic address setting function ● Signal receiver unit installed on 1 indoor unit
<b>Control by external command</b>	Operation and surveillance is carried out using the contact signal from the operation control box in the building surveillance (security) room.	 ● Optional wiring adaptor for electrical appendices is necessary	 ● Optional wiring adaptor for electrical appendices is necessary
<b>Centralised remote control</b>	Centralised control of up to 64 indoor units from remote location up to 1 kilometer away.	 ● Optional SkyAir series interface adaptor required. <sup>1</sup>	 ● Optional SkyAir series interface adaptor required. <sup>1</sup>
<b>Interlock control with HRV</b>	Link by remote controller group control.	 ● Can be operated simultaneously or independently by remote controller (set by ventilation mode)	 ● Can be operated simultaneously by remote controller (set by ventilation mode)
	Zone link control by centralised control.	 ● HRV for indoor units within a zone are operated by interlocking. Can also be operated independently by remote controller.	 ● HRV for indoor units within a zone are operated by interlocking

Note: When a wireless remote controller is used, remote control by two remote controllers is not possible.  
<sup>1</sup>The ceiling mounted cassette type come standard with an interface adaptor for SkyAir series (DTA112BA51).

## Easily adaptable to large-scale, high-function, centralised remote control system.

Central remote controller	Unified on/off controller	Schedule timer	Intelligent Controller
DCS302CA61 (Option)	DCS301BA61 (Option)	DST301BA61 (Option)	DCS601C51 (Option)
Centralised control, with setting as simple as it is with a standard remote controller, of up to 64 groups (1,024 indoor units) is possible.	Centralised control of on/off by group or all at once for up to 256 indoor units.	Unified control of weekly schedule for up to 1,024 indoor units. Schedule timer sets on/off time in 1 minute units to be executed twice a day for a week at a time.	With its high functionality, the full colour "all-in-one" graphic controller facilitates management of SkyAir System in a variety of ways. <small>*Please refer to the page 29 for the details.</small>
<b>Interface adaptor for SkyAir series</b>	Enables centralised control via connection to a high-speed, DIII-NET communication system, adopted for the Daikin VRV system. Necessary for interface adaptor for SkyAir series with the central remote control units shown at above.		● The interface adaptor for the Skyair series is optional except for the ceiling mounted cassette type.
DTA112BA51 (Option)			

# Abundance of functions that provide comfortable air-conditioning in stores and offices.

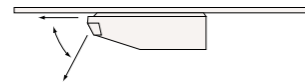
• Note: Some features only available on selected models. See model pages for full list of features applicable to each unit.

## Comfort

### Auto-swing

Delivers comfortable air-conditioning to all areas, near to and far from the air-conditioner.

■ Air discharge direction angle can be set (fixed setting)



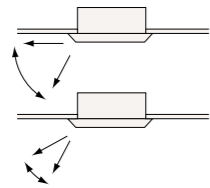
### Swing pattern selection

(standard, ceiling soiling prevention)

You can freely set 2 airflow positions by remote controller.

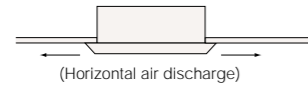
(1) Airflow range in standard position

(2) Airflow range in ceiling soiling prevention position



### Draft prevention function (heating)

To prevent cold air drafts, automatically adjusts airflow to horizontal vector when heating initially starts or when the thermostat turns off.



### Switchable fan speed

\*available on all models.

High setting provides maximum reach while low setting minimises drafts.

### Programme "Dry" with a humidity sensor

\*available on all models.

Dehumidification is computer controlled to prevent abrupt and uncomfortable changes in air temperature. Useful for reducing discomforting humidity without uncomfortable cooling of the room.

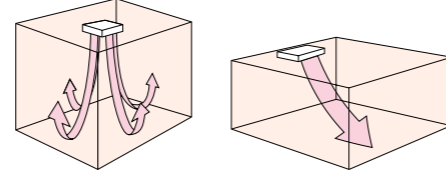
### High fan speed mode

You can increase fan speed approximately 10% higher than the "high" setting.

• Applicable for wall mounted type

### High-ceiling application

Delivers air-conditioning comfort all the way down to the floor in air-conditioning zones with high ceilings.



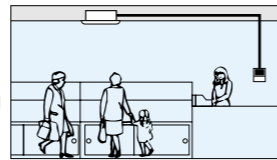
Note: When units are installed on high ceilings, depending on the model, various restrictions concerning maximum height, air discharge direction, and choice of options may apply.

### Two selectable thermo-sensors

Thermo-sensors are included in the indoor unit and optional wired remote controller. Temperature detection closer to target area is possible to further increase the comfort level.

● Use the thermo-sensor in the indoor unit when controlling air conditioning from another room.

Note: Wireless remote controllers have no thermo-sensor.



### Hot start (after defrost)

\*available on all models.

Uncomfortable cold avoided is not discharged when heating operation starts or when switching to heat after defrosting.

### Year-round cooling applicable

Efficient cooling even in winter when indoor temperatures are higher than those outside, such as in underground public spaces or offices with many computers.

### Timer selector

Operation starts when the preset time of the ON timer elapses and stops when the preset time of the OFF timer elapses.

## Mould prevention

### Mould-resistant treatment for filter

Sanitary filter has mould-resistant treatment.

### Mould-proofing drain pan

Mould-proofing maintains hygiene by preventing growth in highly humid conditions.

## Others

### PE fin

\*available on all models.

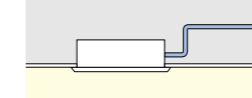
To achieve increased durability by improved resistance to salt corrosion and atmospheric pollution, coated PE fins (with special acrylic pretreatment) are used for the heat exchanger of the outdoor unit. In high corrosive areas, regular maintenance needs to be carried out.

• Note: Some features only available on selected models. See model pages for full list of features applicable to each unit.

## Work and Servicing

### Drain water lift-up mechanism

Steeper gradient ensures more efficient condensate drainage. High-lift is especially useful for long lengths of drain piping.



### Pre charged for up to 30 metres

\*available on all models.

If refrigerant piping length does not exceed 30 m, there is no need for on-site gas charging.

\*Applicable to RZQ71F/100F, outdoor units

(RXS25E/35E, RXS50F/60F, RKS25E/35E, RKS50F/60F outdoor units): 10 m

### Long-life filter

Maintenance is not required for one year (two years when a ceiling mounted cassette type is used).

### Ceiling soiling prevention function

Daikin's innovative air discharge mechanism keeps airflow away from the ceiling. Ceiling cleaning is less frequently required.

### Filter sign

The filter sign warns you when it is time to clean the filter.

\*When using a wired remote controller the sign is displayed in the LCD. When using a wireless remote controller the filter sign lamp illuminates on the signal receiver unit.

### Low gas pressure detection

Insufficient gas charging is normally hard to detect. During post-installation trials and regular inspection procedures, the refrigerant level is monitored by computer to ensure proper gas pressure. Reliability is assured and maintenance and inspection can be carried out more quickly.

### Emergency operation

If there is a malfunction elsewhere in the system, the fan or compressor can still be operated.

### Self diagnosis function

\*available on all models.

The operating parameters of indoor and outdoor units, and sensor data at critical locations throughout the system, are constantly monitored using a microcomputer. To facilitate quick response in the event of a malfunction, a message appears on the LCD of the remote controller and an LED on the unit illuminates.

## Control features

### Auto-restart

\*available on all models.

If there is a power outage while the equipment is operating, operations will restart in the same mode as before the power cut when electricity is restored.

### Auto cool/heat change-over

(Heat pump only)

\*available on all models.

Detects difference in preset temperature and actual room temperature and automatically switches to cooling or heating accordingly.

### Control by 2 remote controllers

Using 2 remote controllers you can operate the equipment locally or from a remote location.

Note: When a wireless remote controller is used, remote control by two remote controllers is not possible.

### Control by 1 remote controller

You can turn up to 16 indoor units on/off with a single remote controller. (When using connected indoor units, the settings must all be the same and on/off will be simultaneous.)

### External command control

Operation and surveillance is carried out using the contact signal from the operation control box in the building surveillance (security) room.

\*Required for KRP58M51 (Option)

### Central remote control

Optional central remote controller enables centralised control of up to 1024 indoor units (64 groups) from up to 1 kilometer away.

### Interlock control

Enables interlocking control with external equipment such as heat reclaim ventilation (HRV).

## Options

### High-efficiency filter unit

Two types are available: 65% and 90% colorimetry.

### Ultra long-life filter

Requires no maintenance for about 4 years\* (10,000h) in stores and offices.

\*For dust concentration of 0.15 mg/m<sup>3</sup>

### Fresh-air intake kit

You can provide air-conditioning with fresh air from outside. Convenient for places where a ventilation fan cannot be installed.

Note: \*Connecting ducts, insect nets, fire dampers, air filters, and other parts should, as required, be procured locally.  
\*\*Outside Air fan interlocked with air conditioning unit is necessary. Optional PCB(KRP1C63) is required for interlocking.  
\*\*\*It is recommended that the volume of outdoor air introduced through the kit is limited to 10% of the maximum airflow rate of the indoor unit. Introducing higher quantities will increase the operating noise and may also influence temperature sending.

# SPECIFICATIONS

## Heat pump

### CEILING MOUNTED CASSETTE TYPE

Model Name		71	100	125	140	
Indoor unit		FCQ71KVEA	FCQ100KVEA	FCQ125KVEA	FCQ140KVEA	
Outdoor unit		RZQ71FV4A	RZQ100KV4A	RZQ125KV4A	RZQ160KV4A	
Power supply						
1 Phase, 240 V, 50 Hz						
Cooling capacity <sup>1</sup>	kW	7.1	10.0	12.5	14.0	
Rated (Min. - Max.)		(3.3-8.0)	(5.0-11.2)	(5.7-14.0)	(6.2-15.4)	
Heating capacity <sup>2</sup>	kW	8.0	11.2	14.0	16.0	
Rated (Min. - Max.)		(3.5-9.0)	(5.1-12.8)	(6.0-16.2)	(6.2-18.0)	
Power consumption	Cooling <sup>1</sup>	2.05	2.94	3.77	4.95	
	Heating <sup>2</sup>	2.10	3.03	3.83	4.80	
Indoor unit	Colour	Fresh white				
	Unit Decoration panel	Fresh white				
	Air flow rate (H/L)	ℓ/s	350/225	533/333	550/375	550/375
		m <sup>3</sup> /min	21/13.5	32/20	33/22.5	33/22.5
	Sound level (H/L) <sup>3</sup>	dB(A)	35/28	43/32	44/34	44/36
	Sound power (H/L) <sup>4</sup>	dB(A)	53/46	60/50	61/52	61/54
	Dimensions (H×W×D)	mm	256×840×840	298×840×840	298×840×840	298×840×840
	Unit Decoration panel	mm	50×950×950	50×950×950	50×950×950	50×950×950
	Machine weight	kg	21	24	24	24
	Unit Decoration panel	kg	5.5	5.5	5.5	5.5
Certified Operation range	Cooling	14 to 25				
	Heating	15 to 27				
Outdoor unit	Colour	Ivory white				
	Compressor Type	Hermetically sealed swing type		Hermetically sealed scroll type		
	Motor output	kW	1.8	1.9	2.4	3.1
	Refrigerant charge (R-410A)	kg	2.8	3.7	3.7	3.7
			(Charged for 30 m)	(Charged for 30 m)	(Charged for 30 m)	(Charged for 30 m)
	Sound level	Cooling/Heating <sup>3</sup>	48/50	49/51	50/52	50/52
		Night quiet mode	47	45	45	46
	Sound power <sup>4</sup>	dB(A)	66	65	-	-
	Dimensions (H×W×D)	mm	770×900×320	1,170×900×320	1,170×900×320	1,170×900×320
	Machine weight	kg	65	98	98	98
Certified Operation range	Cooling	-5 to 46				
	Heating	-15 to 16				
Piping connections	Liquid (Flare)	mm	φ9.5	φ9.5	φ9.5	φ9.5
	Gas (Flare)	mm	φ15.9	φ15.9	φ15.9	φ15.9
	Drain	mm	φ26.0 (Hole)	φ26.0 (Hole)	φ26.0 (Hole)	φ26.0 (Hole)
	Indoor unit	mm	φ26.0 (Hole)	φ26.0 (Hole)	φ26.0 (Hole)	φ26.0 (Hole)
Outdoor unit	mm	φ26.0 (Hole)	φ26.0 (Hole)	φ26.0 (Hole)	φ26.0 (Hole)	
Max. interunit piping length	m	50 (Equivalent length 70)		75 (Equivalent length 90)		
Max. installation level difference	m	30				
Heat insulation		Both liquid and gas piping				

### COMPACT MULTI FLOW CEILING MOUNTED CASSETTE TYPE

Model Name		25	35	50	60	
Indoor unit		FFQ25B8V1B	FFQ35B8V1B	FFQ50B8V1B	FFQ60B8V1B	
Outdoor unit		RXS25EAVMA	RXS35EAVMA	RXS50FVMA	RXS60FVMA	
Power supply						
1 Phase, 220-240 V, 50 Hz						
Cooling capacity <sup>1</sup>	kW	2.5	3.4	4.7	5.8	
Rated (Min. - Max.)		(1.2-3.0)	(1.2-3.7)	(1.7-5.6)	(1.7-6.0)	
Heating capacity <sup>2</sup>	kW	3.2	4.0	5.5	7.0	
Rated (Min. - Max.)		(1.2-4.5)	(1.2-5.0)	(1.7-7.0)	(1.7-8.0)	
Power consumption	Cooling <sup>1</sup>	0.73	1.10	1.62	2.065	
	Heating <sup>2</sup>	0.92	1.20	1.88	2.49	
Indoor unit	Colour	White				
	Unit Decoration panel	White				
	Air flow rate (H)	ℓ/s	150/108	167/108	200/133	250/167
		m <sup>3</sup> /min	9/6.5	10/6.5	12/8	15/10
	Sound level (H/L) <sup>3</sup>	dB(A)	29.5/24.5	32/25	36/27	41/32
	Sound power <sup>4</sup>	dB(A)	46.5	49	53	58
	Dimensions (H×W×D)	mm	286×575×575	286×575×575	286×575×575	286×575×575
	Unit Decoration panel	mm	55×700×700	55×700×700	55×700×700	55×700×700
	Machine weight	kg	17.5	17.5	17.5	17.5
	Unit Decoration panel	kg	2.7	2.7	2.7	2.7
Certified Operation range	Cooling	14 to 28				
	Heating	10 to 30				
Outdoor unit	Colour	Ivory white				
	Compressor Type	Hermetically sealed swing type				
	Motor output	kW	0.6	0.6	1.1	1.1
	Refrigerant charge (R-410A)	kg	1.0 (Charged for 10 m)	1.0 (Charged for 10 m)	1.5 (Charged for 10 m)	1.5 (Charged for 10 m)
	Sound level	Cooling/Heating <sup>3</sup>	47/48	47/48	47/48	49/49
		Night quiet mode	46	46	46	47
	Sound power	Cooling/Heating <sup>4</sup>	62/63	62/63	61/62	63/63
	Dimensions (H×W×D)	mm	550×765×285	550×765×285	735×825×300	735×825×300
	Machine weight	kg	32	32	48	48
	Certified Operation range	Cooling	10 to 46		10 to 46	
Heating		-10 to 20		-15 to 18		
Piping connections	Liquid (Flare)	mm	φ6.4	φ6.4	φ6.4	φ6.4
	Gas (Flare)	mm	φ9.5	φ9.5	φ12.7	φ12.7
	Drain	mm	φ26.0 (Hole)	φ26.0 (Hole)	φ26.0 (Hole)	φ26.0 (Hole)
	Indoor unit	mm	φ26.0 (Hole)	φ26.0 (Hole)	φ26.0 (Hole)	φ26.0 (Hole)
Outdoor unit	mm	φ26.0 (Hole)	φ26.0 (Hole)	φ26.0 (Hole)	φ26.0 (Hole)	
Max. interunit piping length	m	20		30		
Max. installation level difference	m	15				
Heat insulation		Both liquid and gas piping				

Note :  
<sup>1</sup>Rated cooling capacities are based on the following conditions: Indoor temp., 27°CDB, 19.0°CWB; outdoor temp., 35°CDB Equiv. refrigeration piping, 7.5 m (horizontal).  
<sup>2</sup>Rated heating capacities are based on the following conditions: Indoor temp., 20°CDB, outdoor temp., 7°CDB, 6°CWB. Equiv. refrigeration piping, 7.5 m (horizontal).  
<sup>3</sup>Anechoic chamber conversion value, measured according to JIS parameters and criteria. During operation these values are somewhat higher owing to ambient conditions.  
<sup>4</sup>Numerical values are according to ISO 3741:1999.

### CEILING SUSPENDED TYPE

Model Name		35	50	60	71	100	125	
Indoor unit		FHQ35BVV1B	FHQ50BVV1B	FHQ60BVV1B	FHQ71BVV1B	FHQ100BVV1B	FHQ125BVV1B	
Outdoor unit		RXS35EAVMA	RXS50FVMA	RXS60FVMA	RZQ71FV4A	RZQ100KV4A	RZQ125KV4A	
Power supply								
1 Phase, 220-240 V, 50 Hz								
Cooling capacity <sup>1</sup>	kW	3.4	5.0	5.7	7.1	10.0	12.1	
Rated (Min. - Max.)		(1.2-3.7)	(1.7-5.6)	(1.7-6.0)	(3.3-8.0)	(5.0-11.2)	(5.7-14.0)	
Heating capacity <sup>2</sup>	kW	4.0	6.0	7.2	8.0	11.2	14.0	
Rated (Min. - Max.)		(1.2-5.0)	(1.7-7.0)	(1.7-8.0)	(3.5-9.0)	(5.1-12.8)	(6.0-16.2)	
Power consumption	Cooling <sup>1</sup>	1.05 (0.3-1.23)	1.72 (0.44-1.98)	2.00 (0.44-2.19)	2.58	3.26	4.40	
	Heating <sup>2</sup>	1.11 (0.29-1.61)	2.04 (0.4-2.4)	2.49 (0.4-2.78)	2.84	3.77	4.55	
Indoor unit	Colour	White						
	Air flow rate (H/L)	ℓ/s	216/167	216/167	283/216	283/233	400/333	500/416
		m <sup>3</sup> /min	13/10	13/10	17/13	17/14	24/20	30/25
	Sound level (H/L) <sup>3</sup>	dB(A)	37/32	38/33	39/33	39/35	42/37	44/39
	Sound power (H/L) <sup>4</sup>	dB(A)	-/53	-/54	-/55	55/51	58/53	60/55
	Dimensions (H×W×D)	mm	195×960×680	195×960×680	195×1,160×680	195×1,160×680	195×1,400×680	195×1,590×680
	Machine weight	kg	24	25	27	27	32	35
	Certified Operation range	Cooling	14 to 28					
		Heating	10 to 30					
	Outdoor unit	Colour	Ivory white					
Compressor Type		Hermetically sealed swing type			Hermetically sealed scroll type			
Motor output		kW	0.6	1.1	1.1	1.8	1.9	2.4
Refrigerant charge (R-410A)		kg	1.0	1.5	1.5	2.8	3.7	3.7
			(Charged for 10 m)	(Charged for 10 m)	(Charged for 10 m)	(Charged for 30 m)	(Charged for 30 m)	(Charged for 30 m)
Sound level		Cooling/Heating <sup>3</sup>	47/48	47/48	49/49	48/50	49/51	50/52
		Night quiet mode	47	47	47	45	45	45
Sound power		Cooling/Heating <sup>4</sup>	62/63	61/62	63/63	66	65	65
Dimensions (H×W×D)		mm	550×765×285	735×825×300	735×825×300	770×900×320	1,170×900×320	1,170×900×320
Machine weight		kg	32	48	48	65	98	98
Certified Operation range	Cooling	10 to 46		10 to 46		-5 to 46		
	Heating	-10 to 20		-15 to 18		-15 to 16		
Piping connections	Liquid (Flare)	mm	φ6.4	φ6.4	φ6.4	φ9.5	φ9.5	
	Gas (Flare)	mm	φ9.5	φ12.7	φ12.7	φ15.9	φ15.9	
	Drain	mm	φ26.0 (Hole)	φ26.0 (Hole)	φ26.0 (Hole)	φ26.0 (Hole)	φ26.0 (Hole)	
	Indoor unit	mm	φ26.0 (Hole)	φ26.0 (Hole)	φ26.0 (Hole)	φ26.0 (Hole)	φ26.0 (Hole)	
Outdoor unit	mm	φ26.0 (Hole)	φ26.0 (Hole)	φ26.0 (Hole)	φ26.0 (Hole)	φ26.0 (Hole)		
Max. interunit piping length	m	20		30		50 (equivalent length 70)		
Max. installation level difference	m	15		20		30		
Heat insulation		Both liquid and gas piping						

### WALL MOUNTED TYPE

Model Name		100	
Indoor unit		FAQ100BVV1B	
Outdoor unit		RZQ100FV4A	
Power supply			
1 Phase, 220-240 V, 50 Hz			
Cooling capacity <sup>1</sup>	kW	9.7	
Rated (Min. - Max.)		(4.9-11.0)	
Heating capacity <sup>2</sup>	kW	11.0	
Rated (Min. - Max.)		(5.5-12.6)	
Power consumption	Cooling <sup>1</sup>	3.53	
	Heating <sup>2</sup>	3.77	
Indoor unit	Colour	White	
	Air flow rate (H/L)	ℓ/s	483/316
		m <sup>3</sup> /min	23/19
	Sound level (H/L) <sup>3</sup>	dB(A)	45/41
	Sound power (H/L) <sup>4</sup>	dB(A)	61/57
	Dimensions (H×W×D)	mm	360×1,570×200
	Machine weight	kg	26
	Certified Operation range	Cooling	14 to 28
		Heating	10 to 27
	Outdoor unit	Colour	Ivory white
Compressor Type		Hermetically sealed swing type	
Motor output		kW	1.8
Refrigerant charge (R-410A)		kg	2.8 (Charged for 30 m)
Sound level		Cooling/Heating <sup>3</sup>	50/54
		Night quiet mode	49
Sound power		Cooling/Heating <sup>4</sup>	70/70
Dimensions (H×W×D)		mm	770×900×320
Machine weight		kg	65
Certified Operation range		Cooling	-5 to 46
	Heating	-15 to 15.5	
Piping connections	Liquid (Flare)	mm	φ9.5
	Gas (Flare)	mm	φ15.9
	Drain	mm	φ26.0 (Hole)
	Indoor unit	mm	φ26.0 (Hole)
Outdoor unit	mm	φ26.0 (Hole)	
Max. interunit piping length	m	50 (Equivalent length 70 m)	
Max. installation level difference	m	30	
Heat insulation		Both liquid and gas piping	

Note :  
<sup>1</sup>Rated cooling capacities are based on the following conditions: Indoor temp., 27°CDB, 19.0°CWB; outdoor temp., 35°CDB Equiv. refrigeration piping, 7.5 m (horizontal).  
<sup>2</sup>Rated heating capacities are based on the following conditions: Indoor temp., 20°CDB, outdoor temp., 7°CDB, 6°CWB. Equiv. refrigeration piping, 7.5 m (horizontal).  
<sup>3</sup>Anechoic chamber conversion value, measured according to JIS parameters and criteria. During operation these values are somewhat higher owing to ambient conditions.  
<sup>4</sup>Numerical values are according to ISO 3741:1999.

# SPECIFICATIONS

## Heat pump

### CEILING MOUNTED BUILT-IN TYPE

Model Name		Indoor unit	50	60	71	
		Outdoor unit	FBQ50BV1A	FBQ60BV1A	FBQ71BV1A	
			RXS50FAVMA	RXS60FVMA	RXS71FVMA	
Power supply		1 Phase, 220-240 V, 50 Hz				
Cooling capacity <sup>1</sup> Rated (Min. - Max.)		kW	5.0 (1.7-5.6)	5.7 (1.7-7.0)	6.7 (2.3-8.0)	
Heating capacity <sup>2</sup> Rated (Min. - Max.)		kW	6.0 (1.7-7.0)	7.0 (1.7-8.0)	8.2 (2.3-10.0)	
Power consumption		kW	1.98 (0.44-2.25)	2.23 (0.44-2.83)	2.57 (0.57-0.326)	
		kW	1.93 (0.4-2.52)	2.26 (0.4-0.94)	2.67 (0.45-0.385)	
Indoor unit	Colour	Fan	216/150	300/216	300/216	
		Air flow rate (H/L)	13/9	18/13	18/13	
	Cooling	ℓ/s	216/150	300/216	300/216	
		m <sup>3</sup> /min	13/9	18/13	18/13	
	Heating	ℓ/s	233/167	316/233	316/233	
		m <sup>3</sup> /min	14/10	19/14	19/14	
	External static pressure <sup>3</sup> (High-Standard-Low)		Pa	88-49-20	88-49-20	88-49-20
	Sound level <sup>4</sup>	Cooling (H/L)	dB(A)	33/29	34/30	34/30
		Heating (H/L)	dB(A)	33/29	34/30	34/30
	Sound power <sup>5</sup>	Cooling (H/L)	dB(A)	—	—	—
Heating (H/L)		dB(A)	—	—	—	
Dimensions (H×W×D)		mm	300×700×800	300×1000×800	300×1000×800	
Machine weight		kg	34	41	41	
Certified Operation range		Cooling	14 to 28			
		Heating	10 to 30			
Outdoor unit	Colour		Ivory white			
	Compressor	Type	Hermetically sealed swing type			
		Motor output	kW	1.1	1.1	1.92
	Refrigerant charge (R-410A)		kg	1.5 (Charged for 10 m)	1.5 (Charged for 10 m)	2.3 (Charged for 10 m)
	Sound level <sup>4</sup>	Cooling/Heating	dB(A)	47/48	49/49	52/52
		Night quiet mode	dB(A)	—	—	47
	Sound power <sup>5</sup>	Cooling/Heating	dB(A)	61/62	63/63	66/66
		Dimensions (H×W×D)	mm	735×825×300	735×825×300	770×900×320
	Machine weight		kg	48	48	71
	Certified Operation range		Cooling	10 to 46		
		Heating	-15 to 18			
Piping connections	Liquid (Flare)	mm	φ6.4	φ6.4	φ6.4	
	Gas (Flare)	mm	φ12.7	φ12.7	φ15.9	
	Drain	Indoor unit	mm	VP25 (I.D φ25×O.D φ32)		
		Outdoor unit	mm	φ18.0	φ18.0	φ18.0
Max. interunit piping length		m	30			
Max. installation level difference		m	20			
Heat insulation		Both liquid and gas piping				

Note :

<sup>1</sup>Rated cooling capacities are based on the following conditions: Suction temp., 27°CDB, 19.0°CWB; outdoor temp. 35°CDB. Equiv. refrigeration piping, 7.5 m (horizontal).

<sup>2</sup>Rated heating capacities are based on the following conditions: Suction temp., 20°CDB; outdoor temp., 7°CDB, 6°CWB. Equiv. refrigeration piping, 7.5 m (horizontal).

<sup>3</sup>Factory setting is 49Pa.

<sup>4</sup>Anechoic chamber conversion value, measured according to JIS parameters and criteria. During operation these values are somewhat higher owing to ambient conditions.

<sup>5</sup>Numerical values are according to ISO 3741:1999.

### CEILING MOUNTED SLIM DUCT TYPE

Model Name		Indoor unit	25	35	50	60	
		Outdoor unit	FDXS25CVMA	FDXS35CVMA	FDXS50CVMA	FDXS60CVMA	
			RXS25EAVMA	RXS35EAVMA	RXS50FAVMA	RXS60FVMA	
Power supply		1 Phase, 220-240 V, 50 Hz					
Cooling capacity <sup>1</sup> Rated (Min. - Max.)		kW	2.4 (1.2-3.0)	3.4 (1.2-3.8)	5.0 (1.7-5.3)	6.0 (1.7-6.5)	
Heating capacity <sup>2</sup> Rated (Min. - Max.)		kW	3.2 (1.2-4.5)	4.0 (1.2-5.0)	5.8 (1.7-6.0)	7.0 (1.7-8.0)	
Power consumption		kW	0.69 (0.3-0.92)	1.09 (0.3-1.27)	1.65 (0.44-1.93)	2.13 (0.44-2.49)	
		kW	0.91 (0.29-1.49)	1.18 (0.29-1.79)	1.92 (0.4-2.04)	2.32 (0.4-3.18)	
Indoor unit	Colour		White				
	Air flow rate (H/L)	ℓ/s	158/133	167/142	200/167	266/225	
		m <sup>3</sup> /min	9.5/8	10/8.5	12/10	16/13.5	
	Fan	External static pressure	Pa	40	40	40	40
		Driving system					
	Sound level (H/L) <sup>3</sup>		dB(A)	35/31	35/31	37/33	38/34
	Sound power (H/L) <sup>4</sup>		dB(A)	—	—	—	—
	Dimensions (H×W×D)		mm	200×900×620	200×900×620	200×900×620	200×1,100×620
	Machine weight		kg	25	25	27	30
	Certified Operation range		Cooling	14 to 28			
		Heating	10 to 30				
Outdoor unit	Colour		Ivory white				
	Compressor	Type	Hermetically sealed swing type				
		Motor output	kW	0.6	0.6	1.1	1.1
	Refrigerant charge (R-410A)		kg	1.0 (Charged for 10 m)	1.0 (Charged for 10 m)	1.5 (Charged for 10 m)	1.5 (Charged for 10 m)
	Sound level <sup>4</sup>	Cooling/Heating	dB(A)	47/48	47/48	47/48	49/49
		Sound power <sup>5</sup>	dB(A)	62/63	62/63	61/62	63/63
	Dimensions (H×W×D)		mm	550×765×285	550×765×285	735×825×300	735×825×300
	Machine weight		kg	32	32	48	48
	Certified Operation range		Cooling	10 to 46			
			Heating	-10 to 20			
Piping connections	Liquid (Flare)	mm	φ6.4	φ6.4	φ6.4	φ6.4	
	Gas (Flare)	mm	φ9.5	φ9.5	φ12.7	φ12.7	
	Drain	Indoor unit	mm	VP20 (I.D φ20×O.D φ26)			
		Outdoor unit	mm	φ18.0	φ18.0	φ18.0	φ18.0
Max. interunit piping length		m	20				
Max. installation level difference		m	15				
Heat insulation		Both liquid and gas piping					

Note :

<sup>1</sup>Rated cooling capacities are based on the following conditions: Suction temp., 27°CDB, 19.0°CWB; outdoor temp. 35°CDB. Equiv. refrigeration piping, 7.5 m (horizontal).

<sup>2</sup>Rated heating capacities are based on the following conditions: Suction temp., 20°CDB; outdoor temp., 7°CDB, 6°CWB. Equiv. refrigeration piping, 5 m (horizontal).

<sup>3</sup>Anechoic chamber conversion value, measured according to JIS parameters and criteria. During operation these values are somewhat higher owing to ambient conditions.

<sup>4</sup>Numerical values are according to ISO 3741:1999.

## Cooling only

### COMPACT MULTI FLOW CEILING MOUNTED CASSETTE TYPE

Model Name		Indoor unit	25	35	50	60	
		Outdoor unit	FFQ25B8V1B	FFQ35B8V1B	FFQ50B8V1B	FFQ60B8V1B	
			RKS25EVMA	RKS35EVMA	RKS50FVMA	RKS60FVMA	
Power supply		1 Phase, 220-240 V, 50 Hz					
Cooling capacity <sup>1</sup> Rated (Min. - Max.)		kW	2.5 (1.2-3.0)	3.4 (1.2-3.7)	4.7 (1.7-5.6)	5.8 (1.7-6.0)	
Power consumption		kW	0.73	1.10	1.62	2.065	
Indoor unit	Colour		White				
	Air flow rate (H)	ℓ/s	150/108	167/108	200/133	250/167	
		m <sup>3</sup> /min	9/6.5	10/6.5	12/8	15/10	
	Sound level (H/L) <sup>2</sup>	dB(A)	29.5/24.5	32/25	36/27	41/32	
		Sound power <sup>3</sup>	dB(A)	46.5	49	53	58
	Dimensions (H×W×D)	Unit	mm	286×575×575	286×575×575	286×575×575	286×575×575
		Decoration panel	mm	55×700×700	55×700×700	55×700×700	55×700×700
	Machine weight	Unit	kg	17.5	17.5	17.5	17.5
		Decoration panel	kg	2.7	2.7	2.7	2.7
	Certified operation range		°CWB	14 to 28			
Outdoor unit	Colour		Ivory white				
	Compressor	Type	Hermetically sealed swing type				
		Motor output	kW	0.6	0.6	1.1	1.1
	Refrigerant charge (R-410A)		kg	1.0 (Charged for 10 m)	1.0 (Charged for 10 m)	1.5 (Charged for 10 m)	1.5 (Charged for 10 m)
	Sound level (H/L) <sup>2</sup>	dB(A)	47/44	47/44	47/44	49/46	
		Sound power <sup>3</sup>	dB(A)	62	62	61	63
	Dimensions (H×W×D)		mm	550×765×285	550×765×285	735×825×300	735×825×300
	Machine weight		kg	32	32	48	48
	Certified operation range		°CDB	10 to 46			
	Piping connections	Liquid (Flare)	mm	φ6.4	φ6.4	φ6.4	φ6.4
Gas (Flare)		mm	φ9.5	φ9.5	φ12.7	φ12.7	
Drain		Indoor unit	mm	VP20 (I.D φ20×O.D φ26)			
		Outdoor unit	mm	φ18.0 (Hole)	φ18.0 (Hole)	φ18.0 (Hole)	φ18.0 (Hole)
Max. interunit piping length		m	20				
Max. installation level difference		m	15				
Heat insulation		Both liquid and gas piping					

### CEILING SUSPENDED TYPE

Model Name		Indoor unit	35	50	60	
		Outdoor unit	FHQ35BVV1B	FHQ50BVV1B	FHQ60BVV1B	
			RKS35EVMA	RKS50FVMA	RKS60FVMA	
Power supply		1 Phase, 220-240 V, 50 Hz				
Cooling capacity <sup>1</sup> Rated (Min. - Max.)		kW	3.4 (1.2-3.7)	5.0 (1.7-5.6)	5.7 (1.7-6.0)	
Power consumption		kW	1.05	1.72	2.00	
Indoor unit	Colour		White			
	Air flow rate (H)	ℓ/s	216/167	216/167	283/216	
		m <sup>3</sup> /min	13/10	13/10	17/13	
	Sound level (H/L) <sup>2</sup>	dB(A)	37/32	38/33	39/33	
		Sound power <sup>3</sup>	dB(A)	53	54	55
	Dimensions (H×W×D)		mm	195×960×680	195×960×680	195×1,160×680
	Machine weight		kg	24	25	27
	Certified operation range		°CWB	14 to 28		
	Outdoor unit	Colour		Ivory white		
		Compressor	Type	Hermetically sealed swing type		
Motor output			kW	0.6	1.1	1.1
Refrigerant charge (R-410A)		kg	1.0 (Charged for 10 m)	1.5 (Charged for 10 m)	1.5 (Charged for 10 m)	
Sound level (H/L) <sup>2</sup>		dB(A)	47/44	47/44	49/46	
		Sound power <sup>3</sup>	dB(A)	62	61	63
Dimensions (H×W×D)		mm	550×765×285	735×825×300	735×825×300	
Machine weight		kg	32	48	48	
Certified operation range		°CDB	10 to 46			
Piping connections		Liquid (Flare)	mm	φ6.4	φ6.4	φ6.4
	Gas (Flare)	mm	φ9.5	φ12.7	φ12.7	
	Drain	Indoor unit	mm	VP20 (I.D φ20×O.D φ26)		
		Outdoor unit	mm	φ18.0 (Hole)	φ18.0 (Hole)	φ18.0 (Hole)
Max. interunit piping length		m	20			
Max. installation level difference		m	15			
Heat insulation		Both liquid and gas piping				

Note :

<sup>1</sup>Rated cooling capacities are based on the following conditions: Indoor temp., 27°CDB, 19.0°CWB; outdoor temp. 35°CDB. Equiv. refrigeration piping, 7.5 m (horizontal).

<sup>2</sup>Anechoic chamber conversion value, measured according to JIS parameters and criteria. During operation these values are somewhat higher owing to ambient conditions.

<sup>3</sup>Numerical values are according to ISO 3741:1999.

# OPTIONS

## Indoor unit

### CEILING MOUNTED CASSETTE TYPE

Name of option	Remark	Kit name			
		FCQ71KVEA	FCQ100KVEA	FCQ125KVEA	FCQ140KVEA
Decoration panel		BYCP125K-W1			
Sealing member of air discharge outlet		KDBH55K160F			
Panel spacer		KDBP55H160FA			
Fresh air intake kit <sup>1</sup>	Chamber type	Without the T-joint pipe and fan	KDDP55K160		
		With the T-joint pipe, without fan	KDDP55K160K		
	Direct installation type	KDDP55X160			
Chamber connection kit <sup>2</sup>		KKSJ55K160			
Insulation kit for high humidity		KDTP55K80		KDTP55K160	
High-efficiency filter	(Colorimetric method 65%)	KAFP556H80		KAFP556H160	
	(Colorimetric method 90%)	KAFP557H80		KAFP557H160	
Replacement high-efficiency filter	(Colorimetric method 65%)	KAFP552H80		KAFP552H160	
	(Colorimetric method 90%)	KAFP553H80		KAFP553H160	
Filter chamber		KDDFP55H160			
Long-life filter		KAFP551K160			
Ultra long-life filter		KAFP55H160			
Replacement ultra long-life filter		KAFP55H160H			
Branch duct chamber		KDJP55H80		KDJP55H160	
	Remote controller			BRC1D61	
	Wired type <sup>3</sup>			BRC7F632F	
	Wireless type			DCS302CA61	
Central remote controller <sup>4</sup>				DCS301BA61	
Unified ON/OFF controller <sup>4</sup>				DST301BA61	
Schedule timer <sup>4</sup>				DCS601C51	
Intelligent Touch Controller <sup>4</sup>				KRP1C63	
Adaptor for wiring <sup>5</sup>				KRP4A53	
Group control adaptor <sup>5</sup>				KRP1H98	
Installation box for adaptor PCB				KRP1H98	

Note: <sup>1</sup>Refer to page 8 for the details. <sup>2</sup>The indoor unit is equipped standardly with the interface for SkyAir series and an option is unnecessary. <sup>3</sup>Installation box for adaptor PCB (KRP1H98) is necessary. <sup>4</sup>Required for installing high-efficiency filter or ultra long-life filter at the fresh air intake kit. <sup>5</sup>Wiring for wired remote controller to be procured locally.

### Round flow type: List of optional parts required to achieve different blow patterns

For each blow pattern – all round, 4-way, 3-way, 2-way, branch duct connection – the compatibility of each independently installed option (shown in the column on the left) to accessory options (listed across the top of each table) is shown in the cells where the relevant row and column intersect. A circle (O) indicates compatibility, and a cross (X) indicates incompatibility. Any options not shown below are not suitable for independent or accessory installation.

#### All round blow 4-way blow

Independently installable optional parts	Optional accessory parts	Panel spacer <sup>1</sup>	Wireless remote controller	Fresh air intake kit (Chamber type) <sup>1,2</sup>	Fresh air intake kit (direct mount)	High-humidity operation kit	High-efficiency filter <sup>2</sup>	Ultra-long-life filter <sup>2</sup>
Panel/grille related	Panel spacer <sup>1</sup>		O	O	O	X	O	O
Operation control related	Wireless remote controller	O	O	O	O	O	O	O
Auxiliary function related	Fresh air intake kit (Chamber type) <sup>1,2</sup>	O	O	O	X	X	O	O
	Fresh air intake kit (direct mount)	O	O	X	O	O	O	O
Filter related	High-humidity operation kit	X	O	X	O	O	X	X
	High-efficiency filter <sup>2</sup>	O	O	O	O	X	O	X
	Ultra-long-life filter <sup>2</sup>	O	O	O	O	X	O	X

#### 3-way blow 2-way blow

Independently installable optional parts	Optional accessory parts	Panel spacer <sup>1</sup>	Wireless remote controller	Fresh air intake kit (Chamber type) <sup>1,2</sup>	Fresh air intake kit (direct mount)	High-humidity operation kit	High-efficiency filter <sup>2</sup>	Ultra-long-life filter <sup>2</sup>
Panel/grille related	Panel spacer <sup>1</sup>		O <sup>3</sup>	O <sup>3</sup>	O <sup>3</sup>	X	X	O <sup>3</sup>
Operation control related	Wireless remote controller	O <sup>3</sup>	O	O	O	O	X	O
Auxiliary function related	Fresh air intake kit (Chamber type) <sup>1,2</sup>	O <sup>3</sup>	O	O	X	X	X	O
	Fresh air intake kit (direct mount)	O <sup>3</sup>	O	X	O	O	X	O
Filter related	High-humidity operation kit	X	O	X	O	O	X	X
	Ultra-long-life filter <sup>2</sup>	O <sup>3</sup>	O	O	O	X	X	O

#### Branch duct connection

Independently installable optional parts	Optional accessory parts	Panel spacer <sup>1</sup>	Wireless remote controller	Fresh air intake kit (Chamber type) <sup>1,2</sup>	Fresh air intake kit (direct mount)	High-humidity operation kit	High-efficiency filter <sup>2</sup>	Ultra-long-life filter <sup>2</sup>
Branch duct <sup>1</sup> (Chamber type)	1-way branch / unit 3-way blow	O	O	O	O <sup>4</sup>	X	X	O
	2-way branch / unit 2-way blow	X	O	O	O <sup>4</sup>	X	X	O
Branch duct <sup>1</sup> (Round duct type)	1-way branch / unit 2-way blow	X	O	O	O <sup>4</sup>	X	X	O

<sup>1</sup>In some cases, depending on how the unit is embedded in the ceiling, use of branch ducts and fresh air intake kits may not be possible. Before starting installation work make sure to check whether or not joint installation is possible. In particular, ensure that the lower fixing position caused by the addition of panel spacers is acceptable. <sup>2</sup>Use a chamber connection kit if two different types of optional chamber are used together. In this case, the fresh air intake kit must be installed in the upper position. <sup>3</sup>It is not possible to use panel spacers in a 2-way blow installation because condensation will form. <sup>4</sup>It is not possible to install a branch duct on the same side to which a fresh air intake kit (direct mount) is installed.

### COMPACT MULTI FLOW CEILING MOUNTED CASSETTE TYPE

Name of option	Remark	Kit name			
		FFQ25B8V1	FFQ35B8V1	FFQ50B8V1	FFQ60B8V1
Decoration panel		BYFQ60B7W1			
Remote controller	Wired type <sup>1</sup>	BRC1D61			
	Wireless type	Heat pump	BRC7E530W7		
		Cooling only	BRC7E531W7		
Adaptor for wiring <sup>2</sup>		KRP1B57			
Wiring adaptor for electrical appendices <sup>2</sup>		KRP4A53			
Remote sensor		KRCS01-1			
Installation box for adaptor PCB		KRP1B101			
Central remote controller <sup>3</sup>		DCS302CA61			
Unified ON/OFF controller <sup>3</sup>		DCS301BA61			
Schedule timer <sup>3</sup>		DST301BA61			
Intelligent Touch Controller <sup>3</sup>		DCS601C51			
Interface adaptor for SkyAir series		DTA112BA51			
Replacement long-life filter		KAFQ441B60			
Fresh air intake kit	Direct installation type	KDDQ44X60			
Sealing member for air discharge outlet		KDBHQ44B60			
Panel spacer		KDBQ44B60			

Note: <sup>1</sup>Wiring for wired remote controller to be procured locally. <sup>2</sup>Installation box for adaptor PCB (KRP1B101) is necessary. <sup>3</sup>This optional accessory requires DTA112BA51.

### CEILING SUSPENDED TYPE

Name of option	Remark	Kit name					
		FHQ35BVV1B	FHQ50BVV1B	FHQ60BVV1B	FHQ71BVV1B	FHQ100BVV1B	FHQ125BVV1B
Replacement long-life filter	Resin net	KAFJ501D56	KAFJ501D80	KAF501DA80	KAF501DA112	KAF501DA160	
Drain-up kit		KDU50M60VE				KDU50N125VE	
L-type piping kit (for upward direction)		KHFJ5F50	KHFJ5F80		KHF5MA160		
Remote controller	Wired type <sup>1</sup>	BRC1D61					
	Wireless type	Heat pump	BRC7EA63W				BRC7EA66
		Cooling only	DCS302CA61				
Central remote controller <sup>2</sup>		DCS301BA61					
Unified ON/OFF controller <sup>2</sup>		DST301BA61					
Schedule timer <sup>2</sup>		DCS601C51					
Intelligent Touch Controller <sup>2</sup>		KRP1BA54					
Adaptor for wiring		KRP4A52					
Wiring adaptor for electrical appendices <sup>3</sup>		KRP4A52		KRP4AA52			
Interface adaptor for SkyAir series		DTA112BA51			DTA112BA51		
Installation box for adaptor PCB		KRP1C93					
Remote sensor		KRCS01-1A					
Connector for forced on, forced off		EKROROA					
Electrical box with earth terminal (3 blocks)		KJB311AA					
Electrical box with earth terminal (2 blocks)		KJB212AA					

Note: <sup>1</sup>Wiring for wired remote controller to be procured locally. <sup>2</sup>This optional accessory requires DTA112BA51. <sup>3</sup>Installation box for adaptor PCB (KRP1C93) is necessary.

### WALL MOUNTED TYPE

Name of option	Remark	Kit name	
		FAQ100BVV1B	FAQ125BVV1B
Remote controller	Wired type <sup>1</sup>	BRC1D61	
	Wireless type	BRC7C610W	
Central remote controller <sup>2</sup>		DCS302CA61	
Unified ON/OFF controller <sup>2</sup>		DCS301BA61	
Schedule timer <sup>2</sup>		DST301BA61	
Intelligent Touch Controller <sup>2</sup>		DCS601C51	
Wiring adaptor for electrical appendices <sup>3</sup>		KRP4A51	
Interface adaptor for SkyAir series		DTA112BA51	
Electrical box with earth terminal (3 blocks)		KJB311A	
Electrical box with earth terminal (2 blocks)		KJB212A	

Note: <sup>1</sup>Wiring for wired remote controller to be procured locally. <sup>2</sup>This optional accessory requires DTA112BA51. <sup>3</sup>Installation box (KRP4A93) is necessary for wiring adaptor KRP4A51.

### CEILING MOUNTED BUILT-IN TYPE

Name of option	Remark	Kit name		
		FBQ50BV1A	FBQ60BV1A	FBQ71BV1A
Service access panel		KTBJ25K56W	KTBJ25K80W	
Adaptor for discharge		KDAJ25K56	KDAJ25K71	
Remote controller	Wired type <sup>1</sup>	BRC1D61		
	Wireless type	BRC4C62		
Adaptor for wiring (interlock for fresh air intake fan)		KRP1BA54		
Grope control adapter		KRP4A51		
Interface adaptor for SkyAir series		DTA112BA51		
Central remote controller <sup>2</sup>		DCS302CA61		
Unified ON/OFF controller <sup>2</sup>		DCS301BA61		
Schedule timer <sup>2</sup>		DST301BA61		
Intelligent Touch Controller <sup>2</sup>		DCS601C51		

Note: <sup>1</sup>Wiring for wired remote controller to be procured locally. <sup>2</sup>This optional accessory requires DTA112BA51.

### CEILING MOUNTED SLIM DUCT TYPE

Name of option	Remark	Kit name			
		FDXS25CVMA	FDXS35CVMA	FDXS50CVMA	FDXS60CVMA
5-room centralized controller <sup>1</sup>		KRC72			
Adaptor PCB (normal open/normal open pulse contact) <sup>2</sup>		KRP413A1S			
The remote controller loss prevention with the chain		KRP917A4			
Interface adaptor for DIII-NET use		KRP928B2S			
Central remote controller <sup>3</sup>		DCS302CA61			
Unified ON/OFF controller <sup>3</sup>		DCS301BA61			
Schedule timer <sup>3</sup>		DST301BA61			
Intelligent Touch Controller <sup>3</sup>		DCS601C51			
Suction grille		KDG19A45		KDG19A45	
Insulation kit for high humidity		KDT25N50		KDT25N63	

Note: <sup>1</sup>Adaptor PCB is also required for each indoor unit. <sup>2</sup>Time clock and other devices; obtained locally. <sup>3</sup>This optional accessory requires KRP928B2S.

# OPTIONS

## Indoor unit

### Intelligent Touch Controller

New communication functions in the user-friendly icon based multilingual controller simplify centralized control of the system

#### Powerful Functions

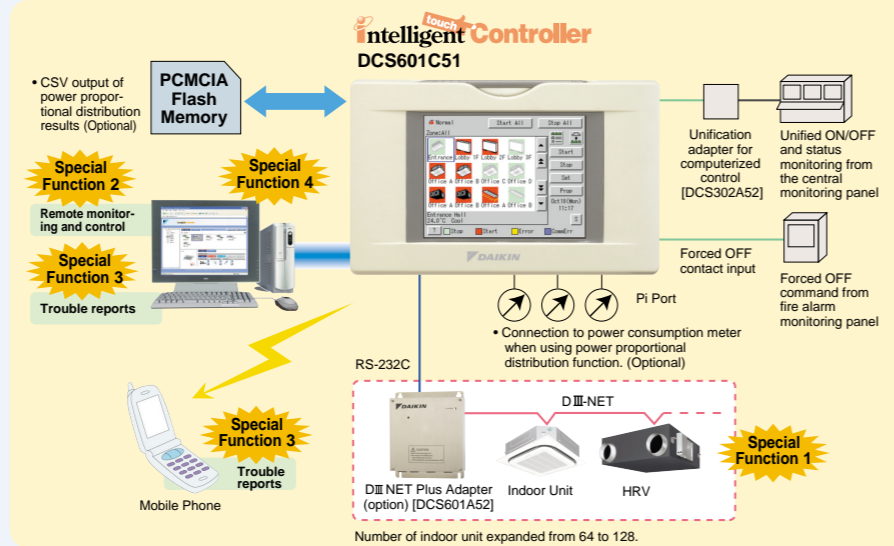
- Special Function 1** Doubling of number of connectable indoor unit by adding a DIII-NET PLUS adapter (Optional)
- Special Function 2** Support for centralized control from else where., using a PC with a Web browser (Optional)
- Special Function 3** Sending of e-mail alerts to a specified address when malfunctions occur (Optional)
- Special Function 4** Built-in Ethernet port for connecting to the Internet or an intranet
- Special Function 5** Simple interlock function

#### Cost Performance

- Labor saving ● Overall energy savings
- Simplified BMS

#### Simple Operation

- Color LCD ● Touch panel ● Icon display
- Multilingual (English, French, German, Spanish, Italian, or Chinese)



Number of indoor unit expanded from 64 to 128. Necessary for optional interface adaptor for SkyAir series (DTA112BA51) with the Intelligent Touch Controller.

\* Limitations apply to some models and functions. For details please contact your local sales office.

## Outdoor unit

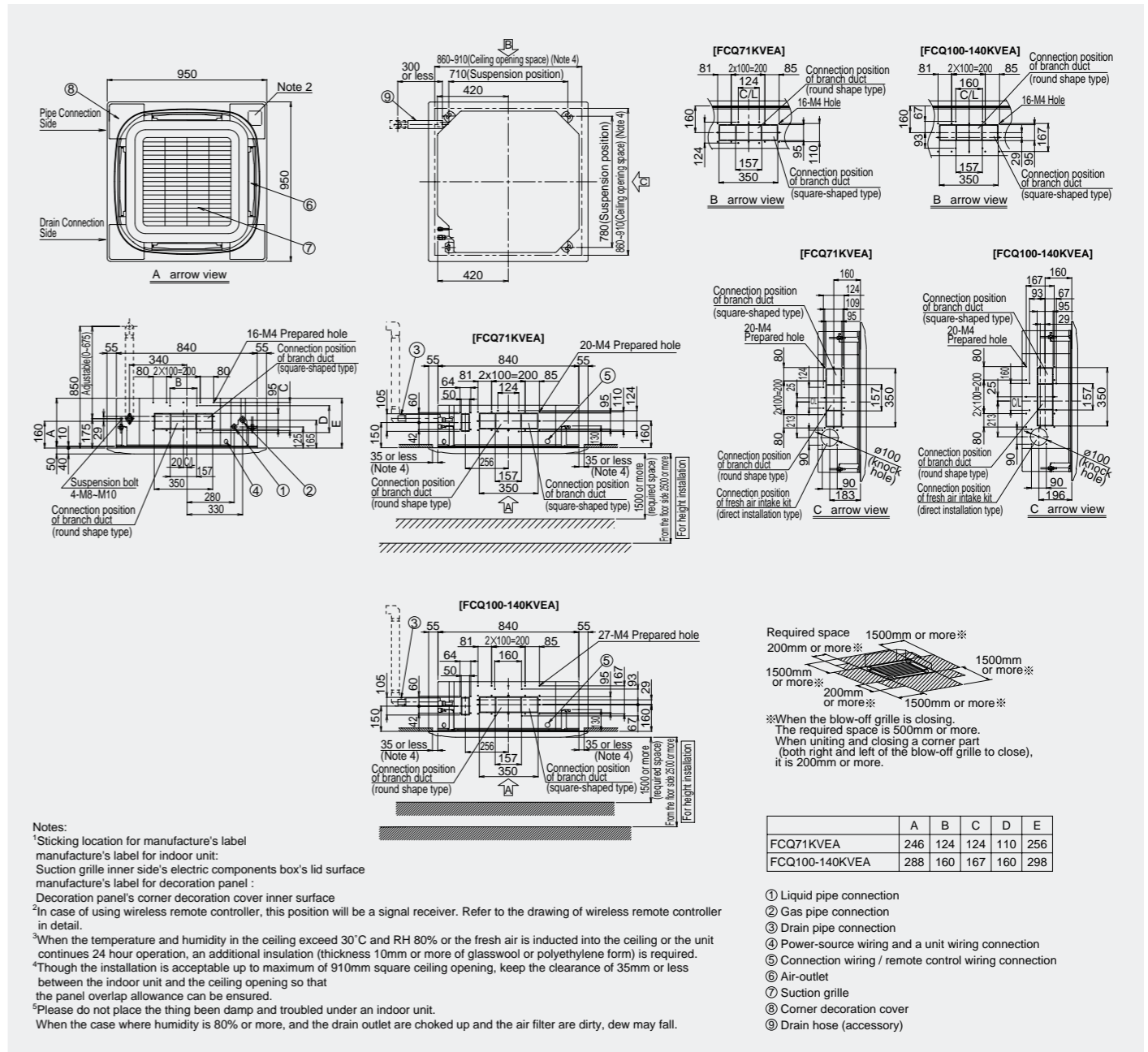
Name of option	Kit name				
	Heat pump				
Central drain plug	RZQ71FV4A	RZQ100FV4A	RZQ100KV4A	RZQ125KV4A	RZQ160KV4A
Wire fixture for preventing overturning	KKPJ5F180				
Fixture for preventing overturning	K-KYZP15C				
Demand adaptor	KPT-60B160				
	KRP58M51				

Name of option	Remark	Kit name			
		Heat pump			
Air direction adjustment grille		RXS25EVMA	RXS35EVMA	RXS50FVMA	RXS60FVMA
Drain plug	One set includes 5 pieces for 5 units	KPW937A4		KPW945A4	
		KKP937A4			

Name of option	Remark	Kit name			
		Cooling only			
Air direction adjustment grille		RKS25EVMA	RKS35EVMA	RKS50FVMA	RKS60FVMA
Drain plug	One set includes 5 pieces for 5 units	KPW937A4		KPW945A4	
		KKP937A4			

# DIMENSIONS (Unit: mm)

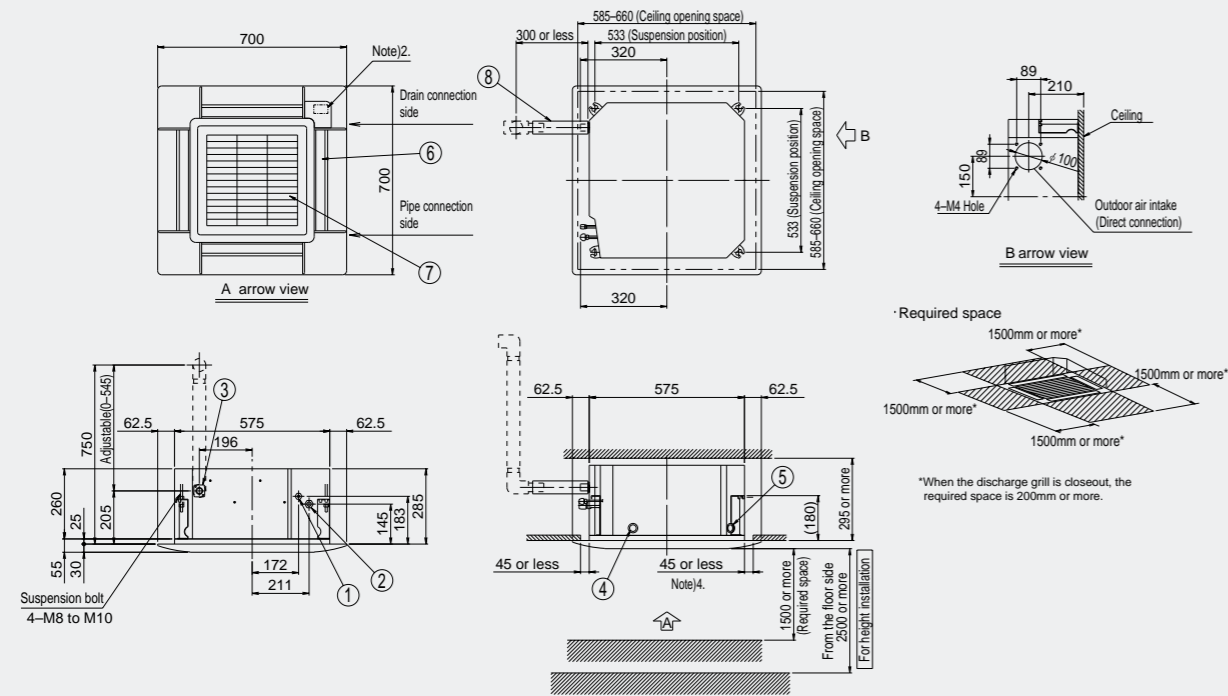
## CEILING MOUNTED CASSETTE TYPE





# DIMENSIONS (Unit: mm)

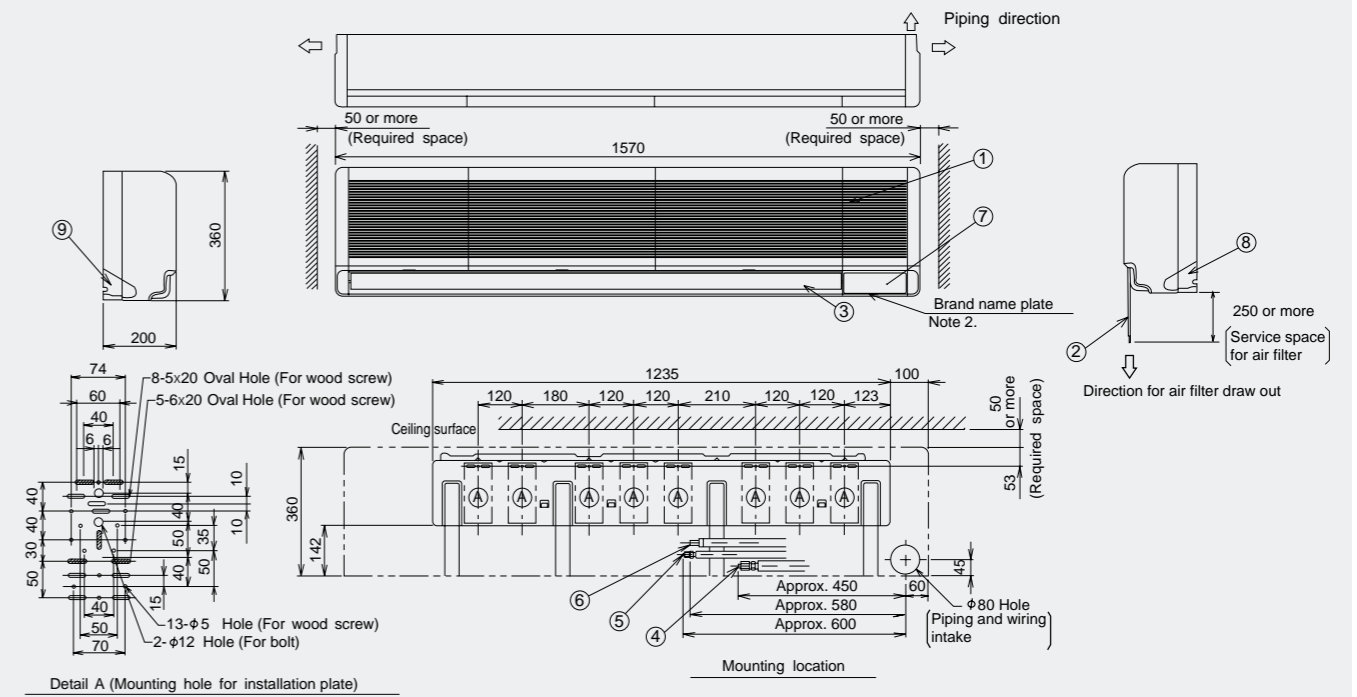
## COMPACT MULTI FLOW CEILING MOUNTED CASSETTE TYPE



Notes:  
 1 Sticking location for manufacturer's label  
 manufacturer's label for indoor unit : on the bell mouth inside suction grille  
 manufacturer's label for decoration panel : on the inner frame inside suction grille  
 2 In case of using wireless remote controller, this position will be a signal receiver.  
 3 refer to the drawing of wireless remote controller in detail.  
 4 When the temperature and humidity in the ceiling exceed 30°C and RH 80% or the fresh air is inducted into the ceiling or the unit continues 24 hour operation, an additional insulation (thickness 10mm or more of glasswool or polyethylene foam) is required.  
 5 Though the installation is acceptable up to maximum of 660mm square ceiling opening, keep the clearance of 45mm or less between the main unit and the ceiling opening so that the panel overlap allowance can be ensured.

- ① Liquid pipe connection
- ② Gas pipe connection
- ③ Drain pipe connection
- ④ Power supply connection
- ⑤ Remote control code and control wiring connection
- ⑥ Air discharge grille
- ⑦ Suction grille
- ⑧ Drain hose

## WALL MOUNTED TYPE

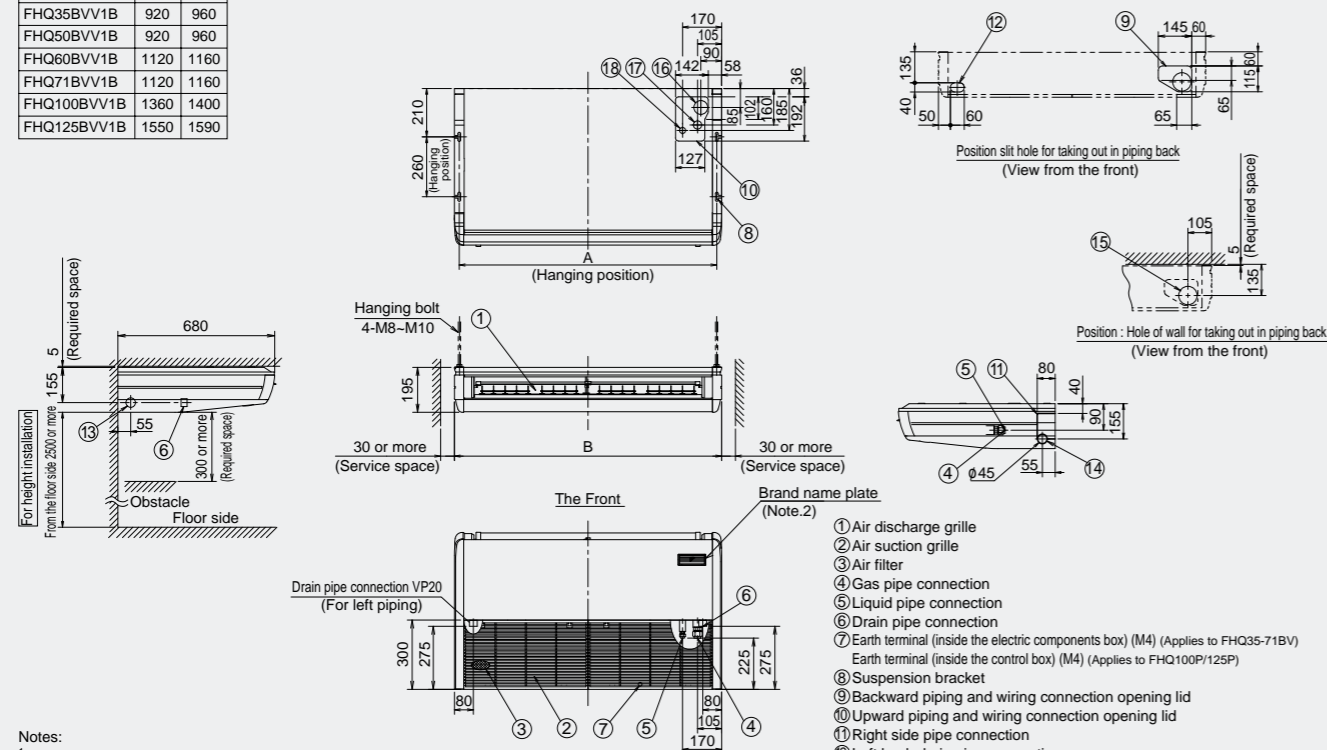


Notes:  
 1 Location of general rated name plate Right side plate outside surface  
 2 In case of using wireless remote controller, this position will be a signal receiver. Refer to the drawing of wireless remote controller in detail.

- ① Front grille
- ② Air filter
- ③ Discharge outlet
- ④ Gas piping connection
- ⑤ Gas piping connection
- ⑥ Drain piping connection
- ⑦ Earth terminal (M4) (inside cover)
- ⑧ Slit hole for right side piping connection
- ⑨ Slit hole for left side piping connection

## CEILING SUSPENDED TYPE

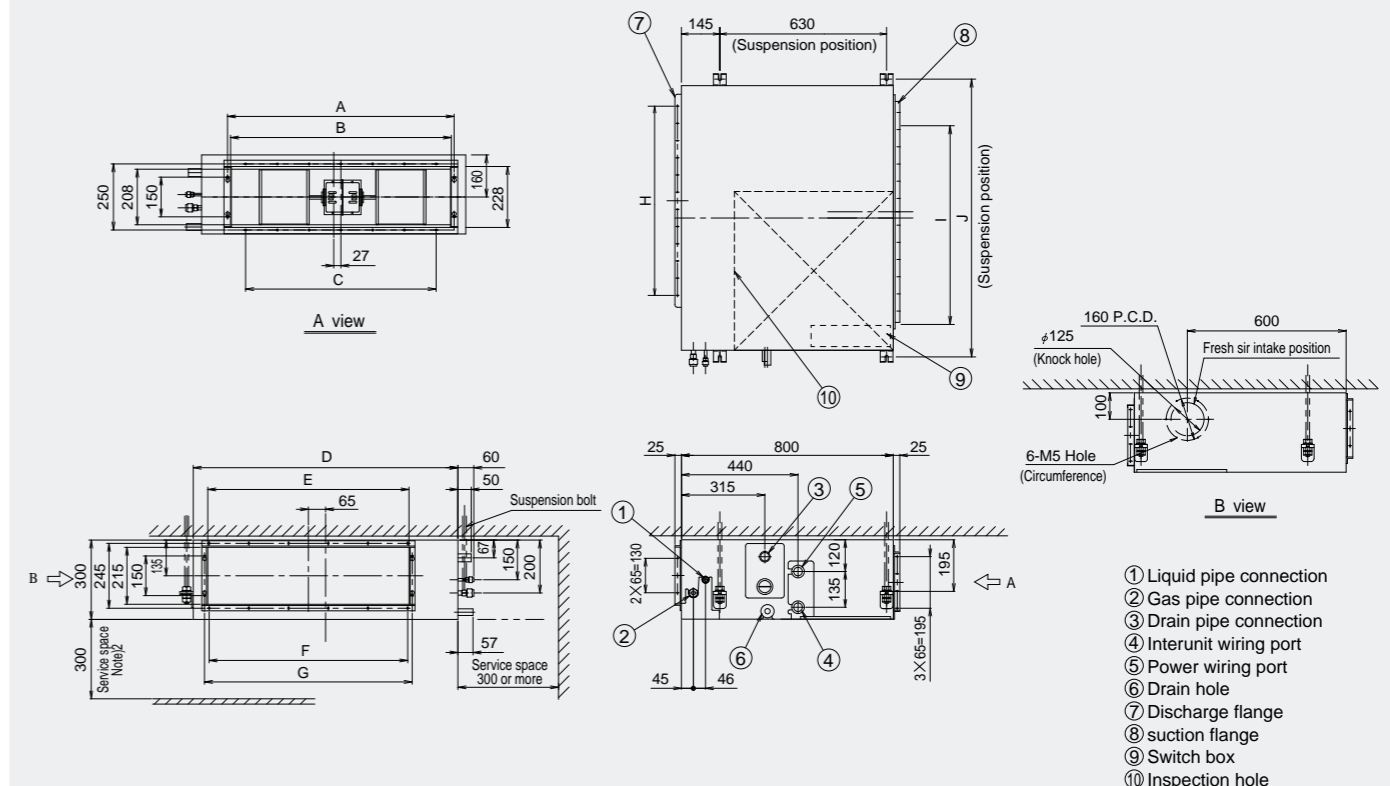
	A	B
FHQ35BVV1B	920	960
FHQ50BVV1B	920	960
FHQ60BVV1B	1120	1160
FHQ71BVV1B	1120	1160
FHQ100BVV1B	1360	1400
FHQ125BVV1B	1550	1590



Notes:  
 1 Location of unit's Name Plate: Bottom of fan housing inside the suction grille.  
 2 In case of using wireless remote controller, this position will be a signal receiver. Refer to the drawing of wireless remote controller in detail.  
 3 (Applies to FHQ35-71BV only)  
 The remote control code is the standard <about 3 m outside the machine> attached. (0.5 mm<sup>2</sup> × 2 wicks × O.D. φ 5.4) (It is not attached to VRV.)

- ① Air discharge grille
- ② Air suction grille
- ③ Air filter
- ④ Gas pipe connection
- ⑤ Liquid pipe connection
- ⑥ Drain pipe connection
- ⑦ Earth terminal (inside the electric components box) (M4) (Applies to FHQ35-71BV)
- ⑧ Earth terminal (inside the control box) (M4) (Applies to FHQ100P/125P)
- ⑨ Suspension bracket
- ⑩ Backward piping and wiring connection opening lid
- ⑪ Upward piping and wiring connection opening lid
- ⑫ Right side pipe connection
- ⑬ Left back drain pipe connection
- ⑭ Left side drain pipe connection
- ⑮ Right side drain pipe connection
- ⑯ Hole of wall for taking out in piping back
- ⑰ Upward drain pipe connection
- ⑱ Upward gas pipe connection
- ⑳ Upward liquid pipe connection

## CEILING MOUNTED BUILT-IN TYPE

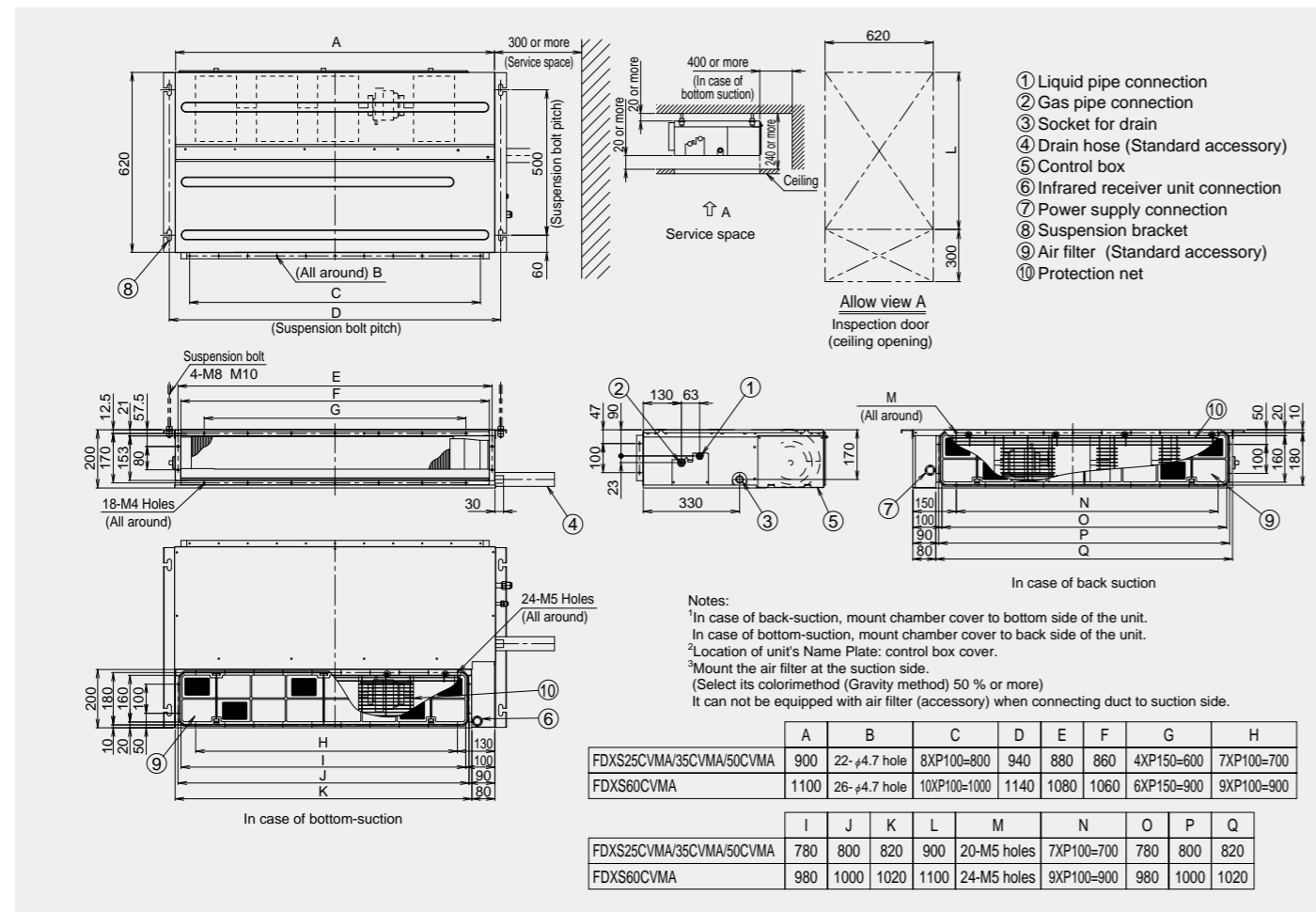


Notes:  
 1 Location of unit's Name Plate: Fan housing surface.  
 2 If the ceiling is not removable, a 300 mm service space must be kept between the unit and the ceiling.  
 3 Mount the air filter at the suction side.  
 4 (Select its colorimethod (Gravity method) 50 % or more)

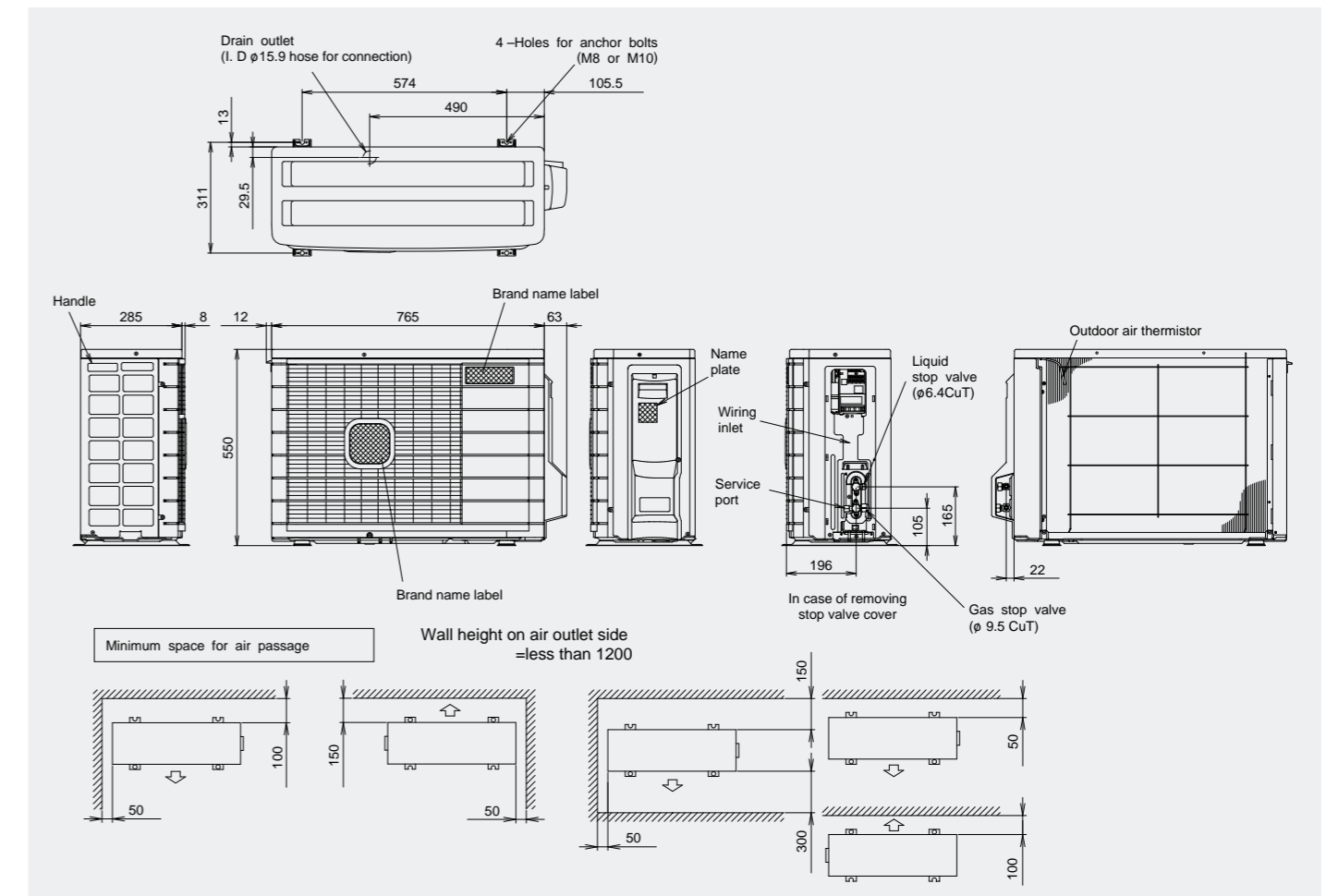
	A	B	C	D	E	F	G	H	I	J
FBQ50BV1A	556	533	4X120=480	700	460	3X150=450	485	6X65=390	7X65=455	750
FBQ60BV1A/71BV1A	856	833	6X120=720	1000	760	5X150=750	785	11X65=715	12X65=780	1050

# DIMENSIONS (Unit: mm)

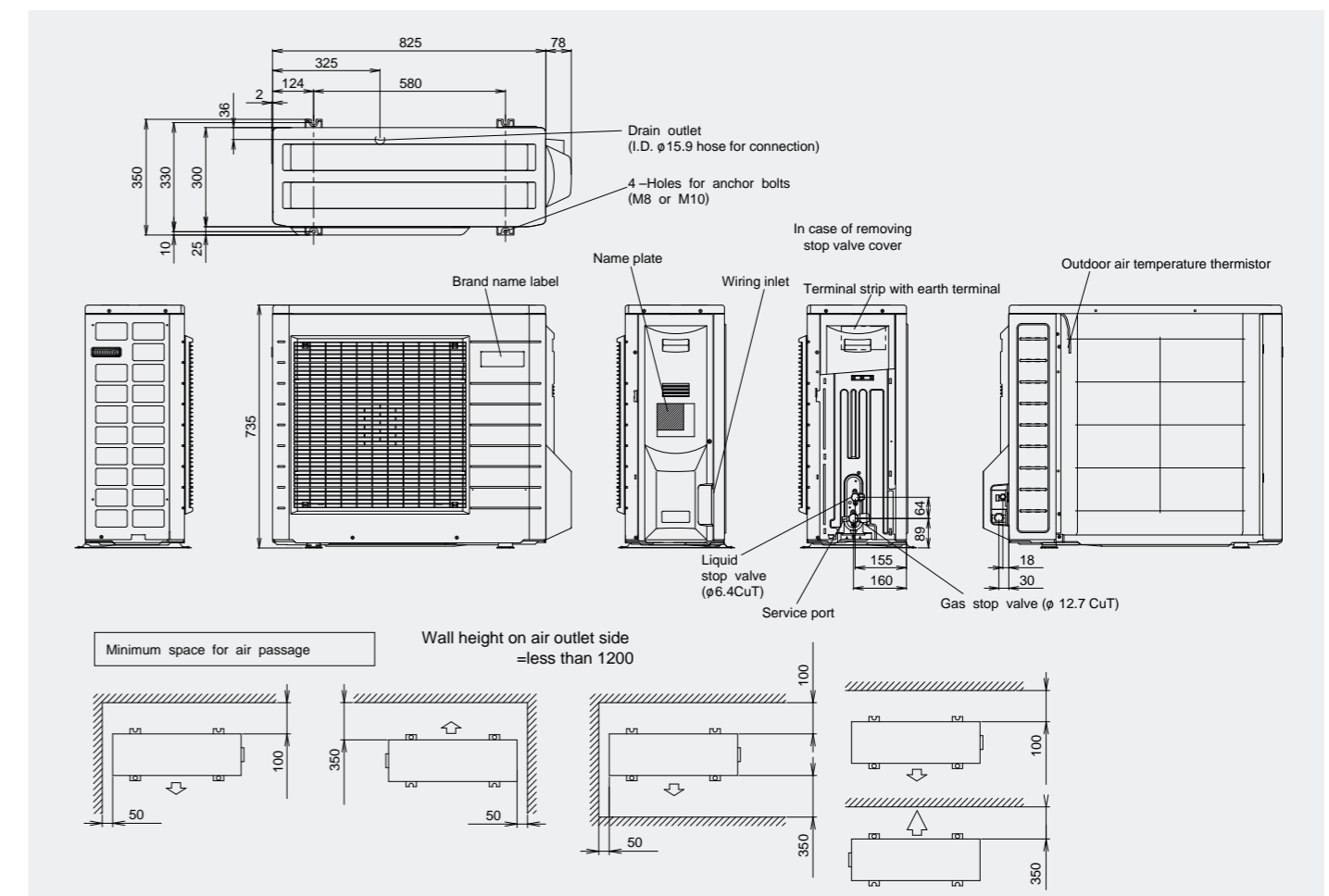
## CEILING MOUNTED SLIM DUCT TYPE



## OUTDOOR UNIT // RXS25EAVMA, RXS35EAVMA, RKS25EVMA, RKS35EVMA

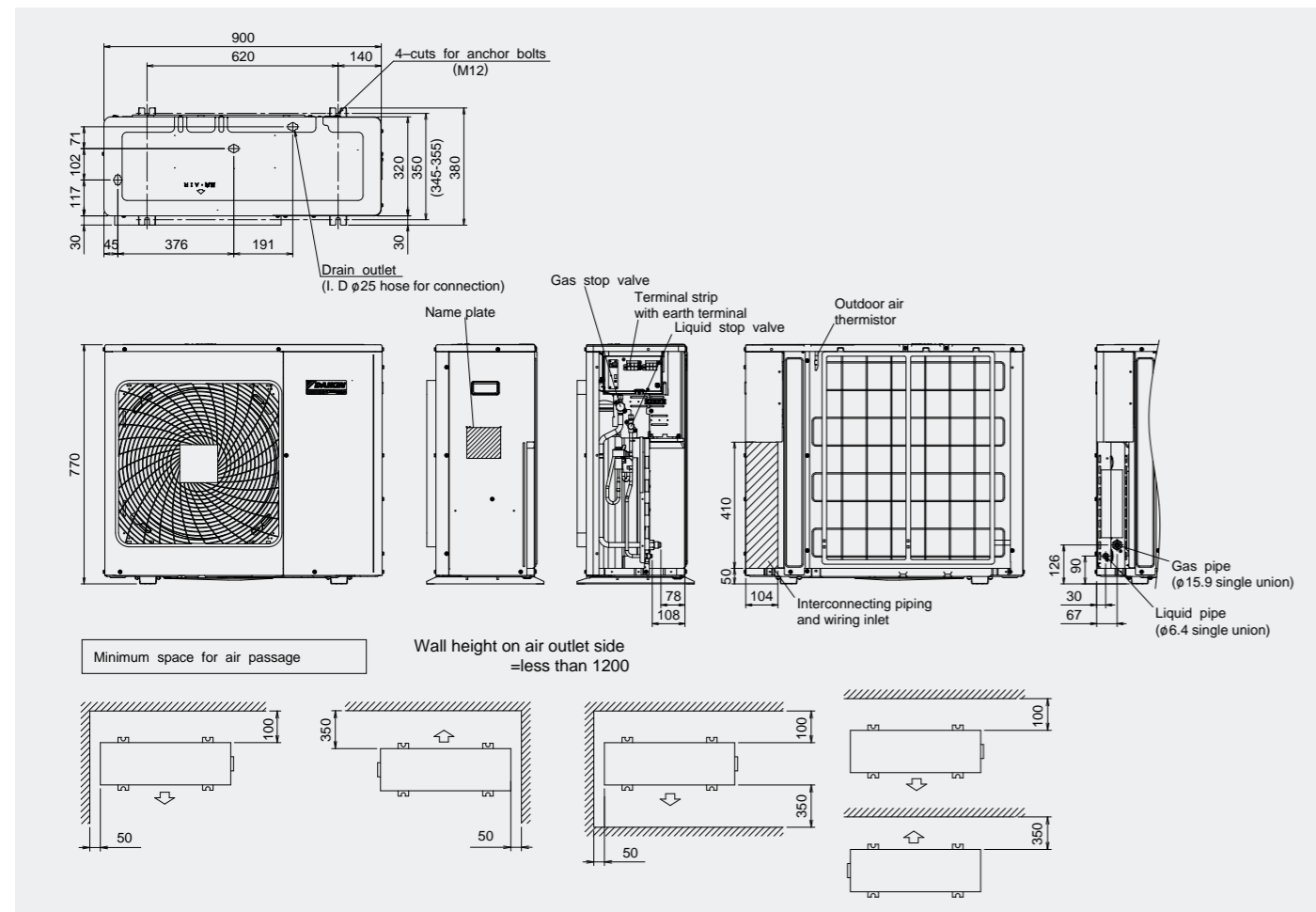


## OUTDOOR UNIT // RXS50FVMA, RXS60FVMA, RKS50FVMA, RKS60FVMA

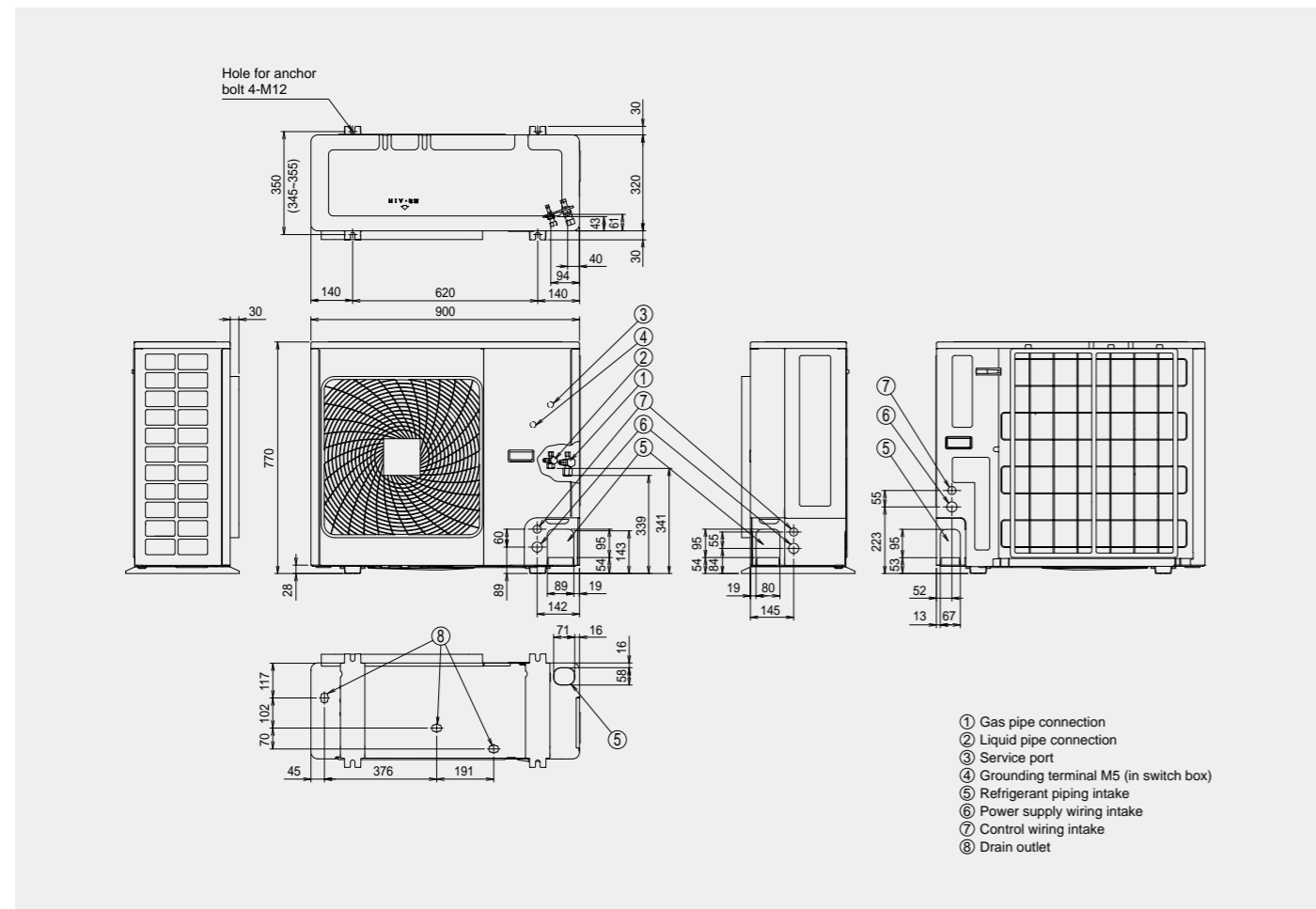


# DIMENSIONS (Unit: mm)

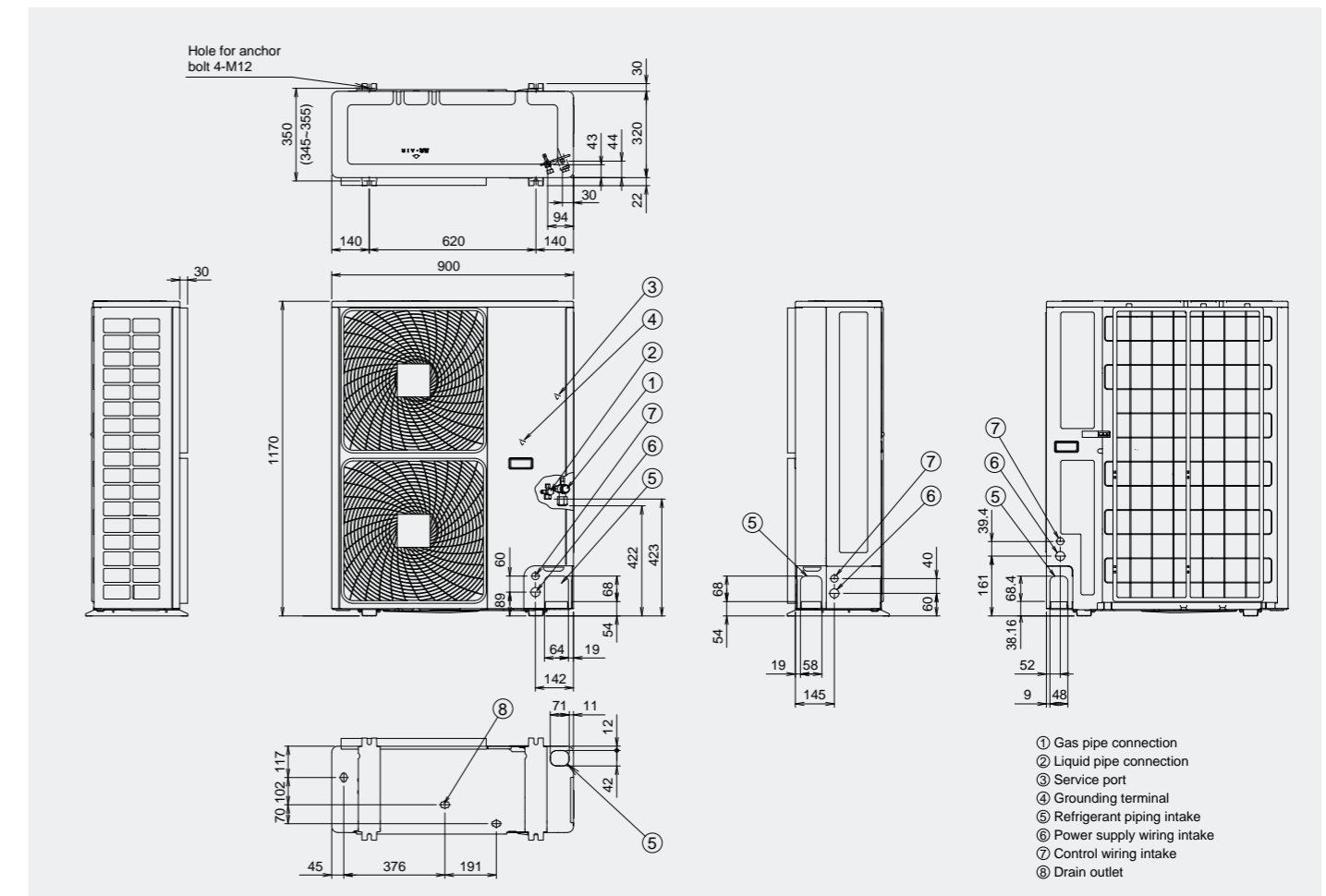
## OUTDOOR UNIT // RXS71FVMA



## OUTDOOR UNIT // RZQ71FV4A, 100FV4A



## OUTDOOR UNIT // RZQ100KV4A, 125KV4A, 160KV4A

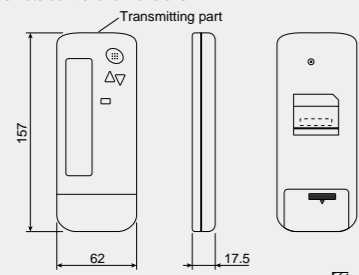


# DIMENSIONS (Unit: mm)

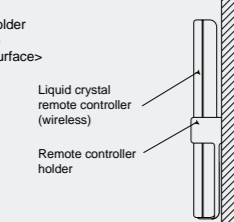
## REMOTE CONTROLLER

### <Wireless type>

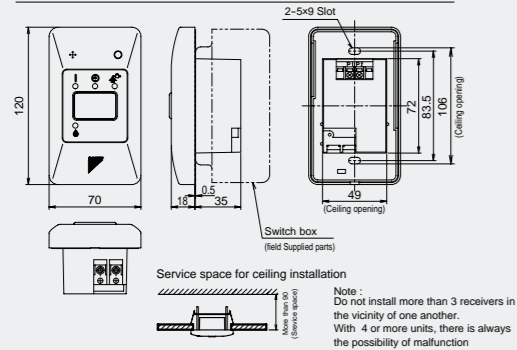
• Remote controller dimensions



• Remote controller holder installation procedure <installation to wall surface>

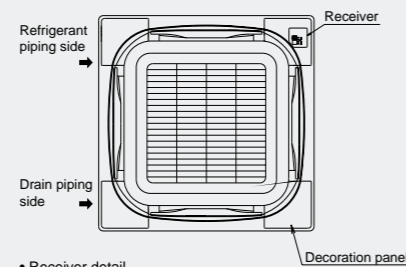


• Receiver detail



### CEILING MOUNTED CASSETTE TYPE

• Receiver installation procedure

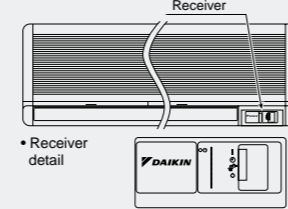


• Receiver detail



### WALL MOUNTED TYPE

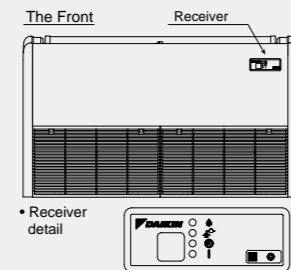
• Receiver installation procedure



• Receiver detail

### CEILING SUSPENDED TYPE

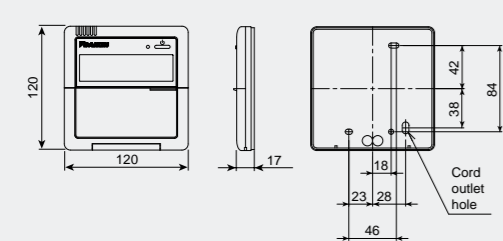
• Receiver installation procedure



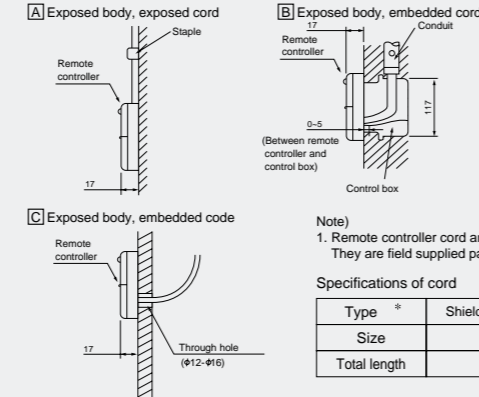
• Receiver detail

### <Wired type>

• Remote controller dimensions



• Installation method



# Installation service space for outdoor unit

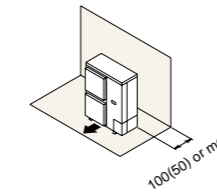
## For RZQ71-100FV4A, RZQ100-160KV4A

The values represent the case for the RZQ100-160KV4A. The dimensions in ( ) are for the RZQ71-100FV4A (The unit values is mm.)

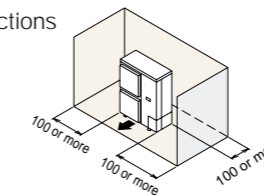
### When there is an obstruction on the inlet side When the overhead space is open

1. For single unit installation

When there is an obstruction only on the inlet side

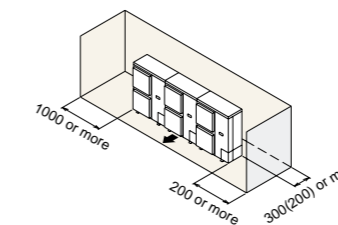


When there are obstructions on both sides



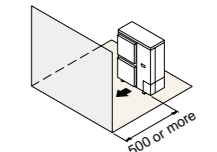
2. For series installation (more than two units)

When there are obstructions on both sides

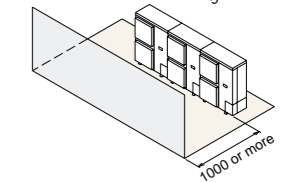


### When there is an obstruction on the outlet side When the overhead space is open

1. For single unit installation



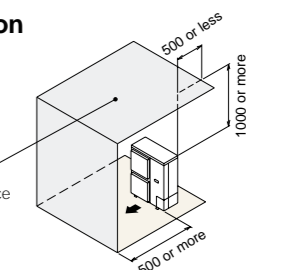
2. For series installation (more than two units)



### When there is an obstruction in the overhead space

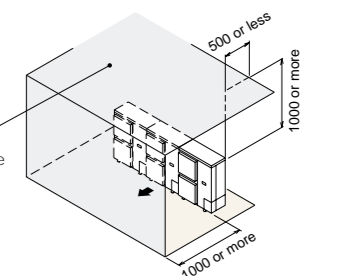
1. For single unit installation

An obstruction in the overhead space



2. For series installation (more than two units)

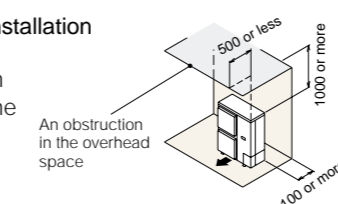
An obstruction in the overhead space



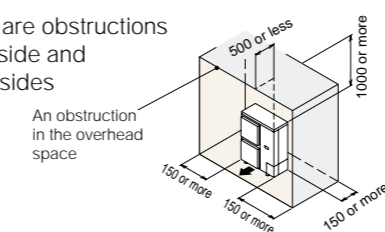
### When there is an obstruction in the overhead space

1. For single unit installation

When there is an obstruction on the inlet side

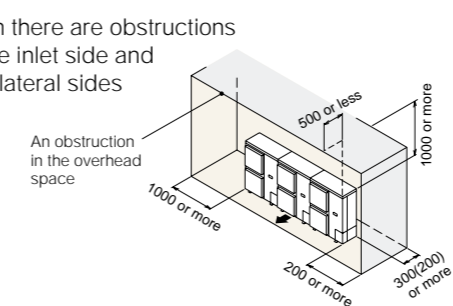


When there are obstructions on the inlet side and both lateral sides



2. For series installation (more than two units)

When there are obstructions on the inlet side and both lateral sides



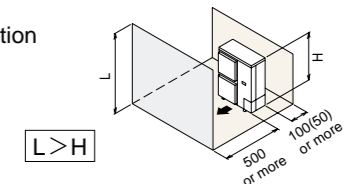
### When there are obstructions on both the inlet and outlet sides

#### Pattern 1

When the obstruction on the outlet side is higher than the unit itself (There is no limit to the height of the obstruction on the outlet side.)

### When the overhead space is open

1. For single unit installation



2. For series installation (more than two units)

