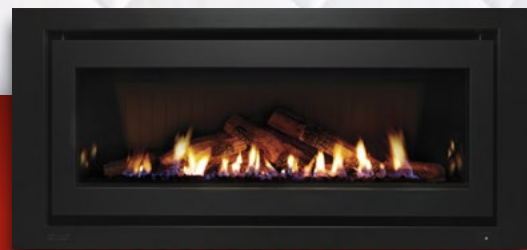


# 1250

Gas Log Flame Fire

# Rinnai

*Relax. It's a Rinnai.*



# A Gas Log Fire that's sure to have wide appeal.

Introducing the new Rinnai 1250 – the latest innovation in Gas Log Fires. At over 1.3 meters wide, the long landscape design will make a bold statement in your home. Stunning design, energy efficiency, installation flexibility and high heat output are the hallmarks of the 1250 – so you can relax, for longer.

## Features and Benefits

- > Highly efficient 5.5 star energy rating\*
- > Powerful heat output up to 8.1kW, perfect for open plan living areas†
- > Available with either glowing pebbles or Australian Eucalyptus logs
- > Installation designed specifically for new homes and major renovations
- > Safety mesh guard to provide peace of mind and eliminate reflections
- > Thermostatically controlled
- > Flexible power flueing
- > Remote control included as standard.
- > 3 speed fan with quiet operation.

\*When installed using extended flue. †When using short flue.

## Design Options



*Black on Black Frame*



*Stainless Steel on Black Frame*



*Australian Eucalyptus log set*



*Glowing Pebbles with Optional Side Reflector Panel*

## Additional Features

### > Design

The long, landscape format of the 1250 creates a striking centre piece that meets a variety of different interior design styles. The logs are modelled on the traditional look of split wood with granules scattered across the base of the fire to give a beautiful, glowing flame. The 1250 also offers a modern twist; glowing pebbles that radiate warmth are available as an alternative to logs.

### > Flexibility

The 1250 features advanced "power flue" technology, which means a fan is used to force the exhaust air outside – allowing for a range of flueing options like underfloor, sideways or direct. Unlike a conventional gas fire which must be vented vertically, the 1250 can be installed in a variety of different applications.

### > Heat Output

Rinnai's high performance heat exchanger technology makes the 1250 a powerful heater, perfect for heating large, open plan living areas. The quiet fan and rapid warm-up time help to quickly create a comfortable environment on those cold winter nights.

### > Energy Efficiency

Featuring a highly efficient 5.5\* star energy rating, the 1250 is leading the way and pushing new boundaries of energy efficiency. Aside from reduced running costs, the high efficiency rating also helps to protect the environment generating fewer greenhouse gas emissions compared to inefficient heaters.

### > Side Reflectors - Optional Extra

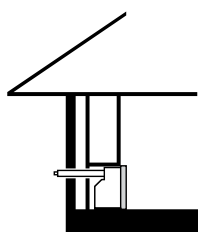
The 1250 has the option of reflective side panels to enhance the glowing flames. Black vitreous enamel panels have been designed specifically for the 1250, giving the illusion of an everlasting flame with a subtle presence when the appliance is not in use.

### > Limited edition - Submarine Packaging

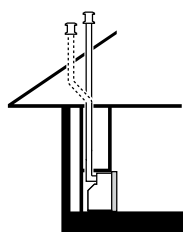
The first 100 Rinnai 1250 gas log fires sold will include packaging that transforms into a submarine! This limited edition packaging will be a hit with young children whilst you relax in front of your brand new fire.



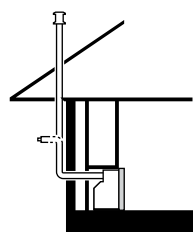
## Flueing Options



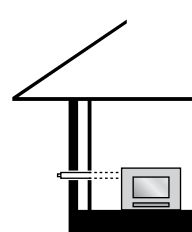
*Rear External Wall*



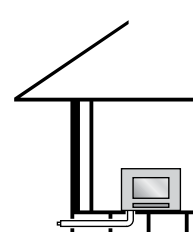
*Vertical*



*Through Wall*



*Sideways  
Through Wall*

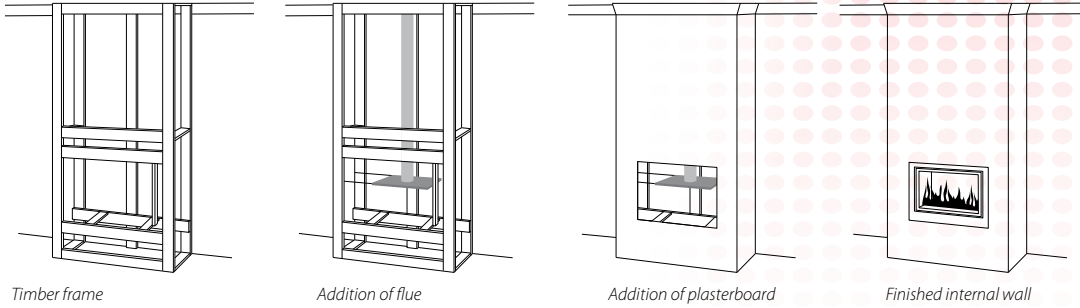


*Down and Out*

**Please note:** \*Suitable for direct, vertical or horizontal flueing. 500mm required for down and out applications. See installation instructions for full details.

# Installation options

## Creating a False Fireplace



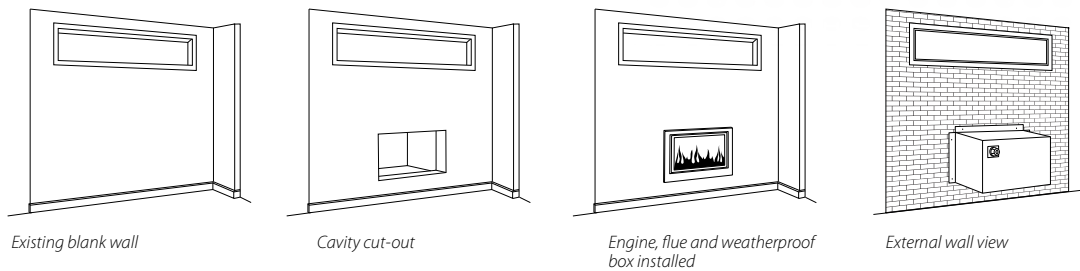
Timber frame

Addition of flue

Addition of plasterboard

Finished internal wall

## Weatherproof Box



Existing blank wall

Cavity cut-out

Engine, flue and weatherproof box installed

External wall view

## Specifications

	Visual Dimensions* (mm)			Inbuilt Cavity Dimensions (mm)			Efficiency Star Rating AS4553	Colour	Gas Input	kW Out-put	'Heats up to' Capacity (m <sup>2</sup> )			
	Height	Width	Depth	Height	Width	Depth					Very Cold	Cold	Cool	Mild
<b>1250</b>	620	1320	25	570	1265	570	5.2 - 5.5	Stainless Steel on Black, Black on Black	10 34	8.4 <sup>†</sup>	69	82	110	125

## Warranty

	Heat Exchanger	Fan	All Other Parts	Free Labour
Domestic Use	10 years pro rata <sup>(1)</sup>	2 years	1 year	1 year
Commercial Use	1 year on all parts and labour			

**Please note:** For full definitions of Domestic and Commercial use, along with other conditions and exclusions, please refer to [www.rinnai.com.au](http://www.rinnai.com.au)  
<sup>(1)</sup>Full replacement cost in the 1st year, reducing 10% per year thereafter. 240V power is required on all models. A power cord and plug is fitted. If hardwiring is required, consult a licensed electrician. \*Dimensions are subject to production tolerances and may vary slightly from those given. Rinnai Australia Pty Ltd reserves the right to make modifications and change specifications without notice. # Refers to the visual appearance of the appliance external to the wall for inbuilt models.

Refer to our online heater selector to find the right heater to suit your needs.  
 Download our "Rinnai Fire" app to visualise how a Rinnai Fireplace could look in your home.

### Dealer Details:

# Rinnai

Relax. It's a Rinnai.

Rinnai Australia Pty Ltd ABN 74 005 138 769

100 Atlantic Drive, Keysborough, Victoria 3173

For further information visit [www.rinnai.com.au](http://www.rinnai.com.au) or call 1300 555 545